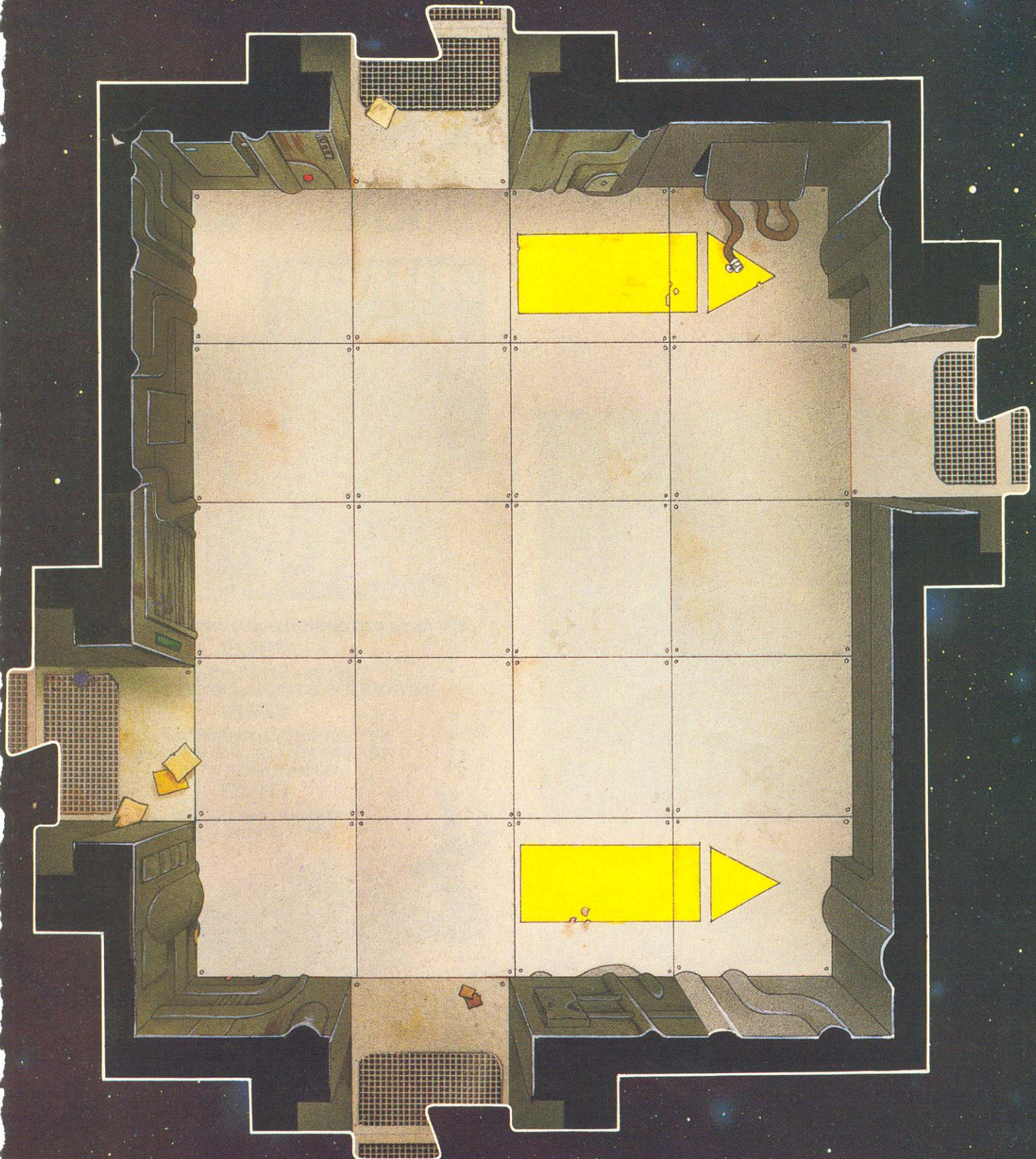
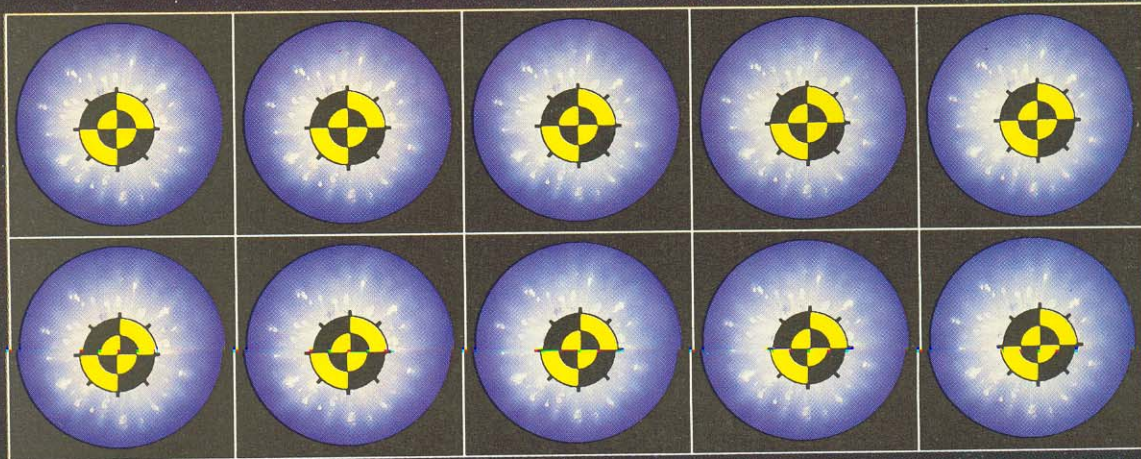


## NEW BOARD SECTIONS

On the following pages are the new board sections, plasma grenade and computer terminal counters you'll need for this campaign. We've also included a Campaign Roster Sheet, which should be photocopied before cutting out the floor plans. All you need do with the floorplans is stick them onto a piece of card, let them dry and cut them out with a sharp modelling knife or a pair of scissors. Take special care when you trim around the board joints to ensure that they link together with your existing Space Hulk floorplans.



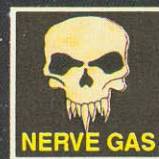
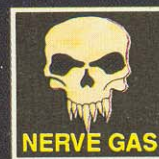




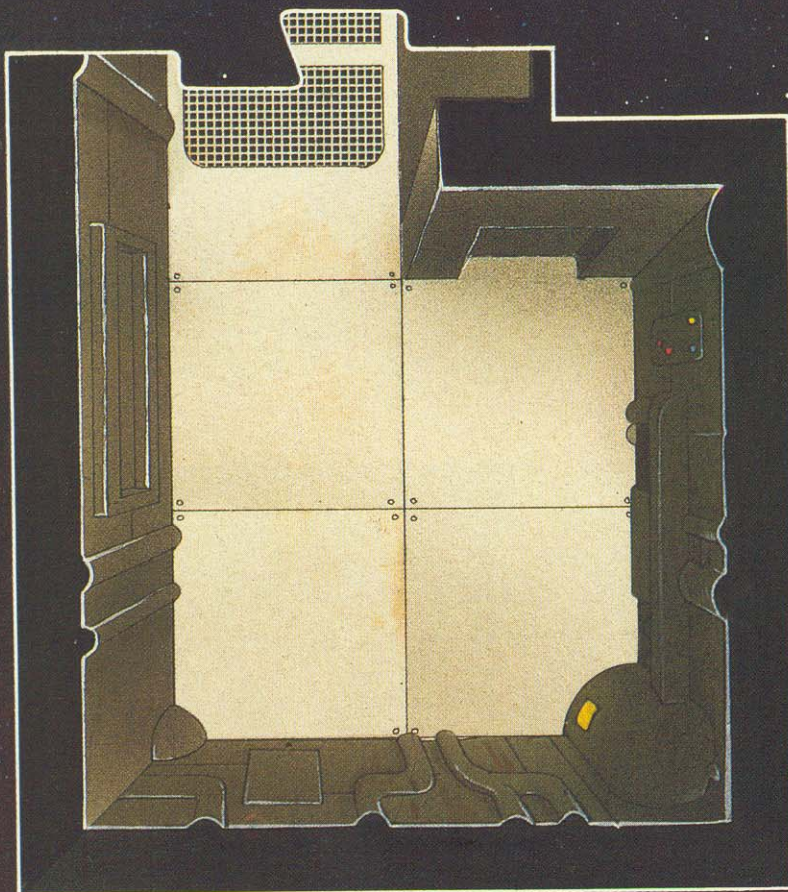
## PLASMA GRENADES WITH PROXIMITY FUSES

### COMPUTER TERMINALS

The functional and none functional computer terminals are all double sided. Stick all the counters marked 'A' to a piece of card. When they're dry, cut them out carefully with a sharp modelling knife or a pair of scissors. Then cut out all of the counters marked 'B' and glue them onto the reverse side.



### COMPUTER TERMINALS



A



Functional B



A



None Functional B

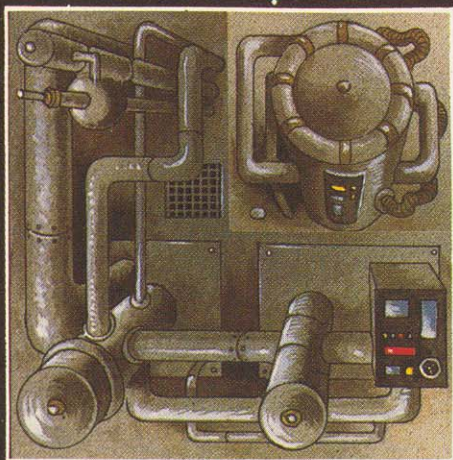


A

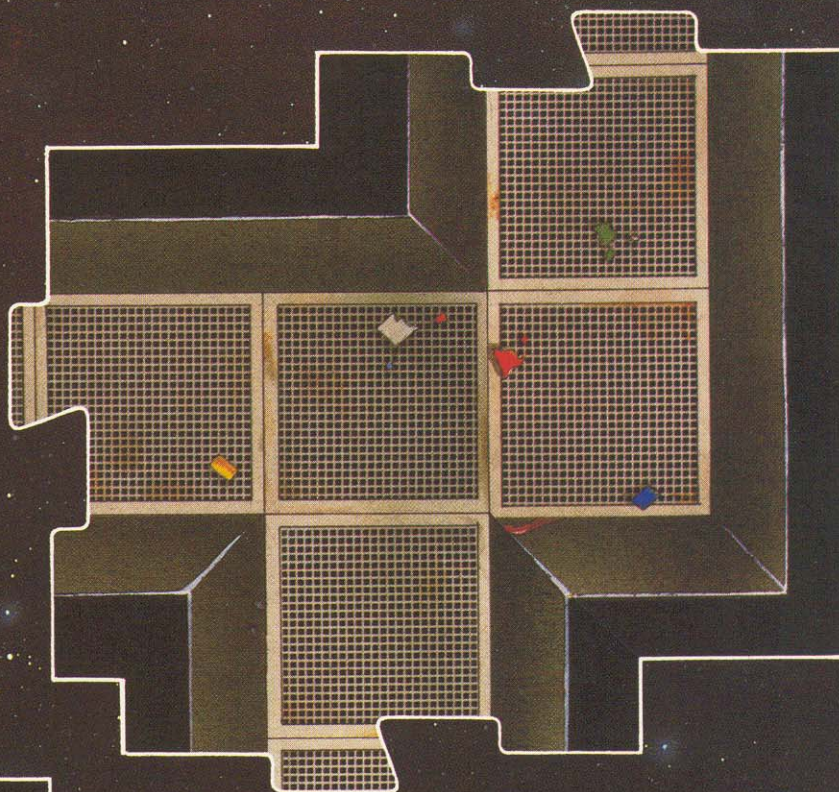


None Functional B





**GENERATOR**



**COMPUTER CONSOLE**

