

# **WARHAMMER<sup>®</sup>**

## **40,000**



# **BATTLE PRIMER**

**THE ESSENTIAL FOUNDATION FOR PLAYING GAMES OF WARHAMMER 40,000**





# CORE RULES

Warhammer 40,000 puts you in command of a force of mighty warriors and war machines. The core rules on these pages contain the foundation for playing games of Warhammer 40,000 with your Citadel Miniatures collection and to wage glorious battle across the war-torn galaxy.

## MODELS & DATASHEETS

The rules and characteristics for all models, and some terrain features, are presented on datasheets, which you will need in order to use the models in battle.

## UNITS

Models move and fight in units, made up of one or more models. A unit must be set up and finish any sort of move as a group, with every model within 2" horizontally, and 6" vertically, of at least one other model from their unit: this is called unit coherency. If anything causes a unit to become split up during a battle, it must re-establish its unit coherency the next time it moves.

## TOOLS OF WAR

In order to fight a battle, you will require a tape measure and some dice.

Distances in Warhammer 40,000 are measured in inches (") between the closest points of the bases of the models you're measuring to and from. If a model does not have a base, such is the case with many vehicles, measure to and from the closest point of that model's hull instead. You can measure distances whenever you wish.

Warhammer 40,000 uses six-sided dice, sometimes abbreviated to D6. Some rules refer to 2D6, 3D6 and so on – in such cases, roll that many D6s and add the results together. If a rule requires you to roll a D3, roll a dice and halve the total. When halving any dice roll, round fractions up before applying modifiers (if any) to the result. All modifiers are cumulative. If a rule requires a dice roll of, for example, 3 or more, this is often abbreviated to 3+.

## THE BATTLE ROUND

Warhammer 40,000 is played in a series of battle rounds. During each battle round, both players have a turn. The same player always takes the first turn in each battle round – the mission you are playing will tell you which player this is. Each turn consists of a series of phases, which must be resolved in order. The phases are as follows:

### 1. MOVEMENT PHASE

Move any units that are capable of doing so.

### 2. PSYCHIC PHASE

Psykers can use powerful mental abilities.

### 3. SHOOTING PHASE

Your units may shoot enemy units.

### 4. CHARGE PHASE

Your units may move into close combat against enemy units.

### 5. FIGHT PHASE

Both players' units pile in and attack with melee weapons.

### 6. MORALE PHASE

Test the courage of depleted units.

Once a player's turn has ended, their opponent then starts their turn. Once both players have completed a turn, the battle round has been completed and the next one begins, and so on, until the battle is concluded.



# 1. MOVEMENT PHASE

The ground shakes to the tread of marching feet and the growl of engines as armies advance across the battlefield and vie for advantageous positions.

Start your Movement phase by picking one of your units and moving each model in that unit until you've moved all the models you want to. You can then pick another unit to move, until you have moved as many of your units as you wish. No model can be moved more than once in each Movement phase.

## Moving

A model can be moved in any direction, to a distance, in inches, equal to or less than the Move characteristic on its datasheet. No part of the model's base (or hull) can move further than this. It cannot be moved through other models or through terrain features such as walls, but can be moved vertically in order to climb or traverse any scenery.

If the datasheet for a model says it can **FLY**, it can move across models and terrain as if they were not there.



## Minimum Move

Some models that can **FLY** have a Move characteristic consisting of two values. The first is the model's minimum speed – in the Movement phase, all parts of the model's base must end the move at least that far from where they started. The second is its maximum speed – no part of the model's base can be moved further than this. If a model cannot make its minimum move, or is forced to move off the battlefield because of its minimum speed, it is destroyed and removed from the battlefield – the model has either stalled and crashed or been forced to abandon the battle.

## Enemy Models

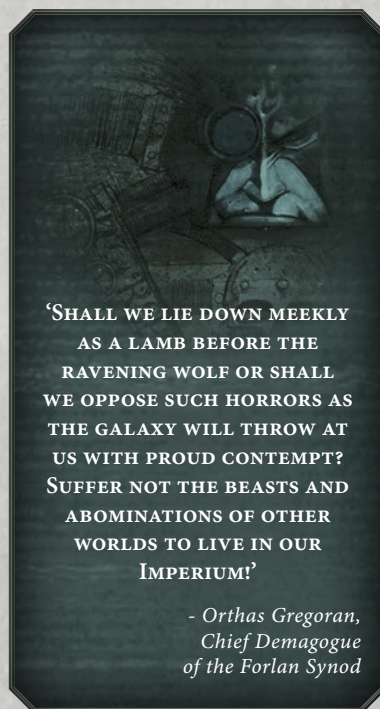
All models in the same army are friendly models. Models controlled by an opposing player are enemy models. When you move a model in the Movement phase, it may not be moved within 1" of any enemy models.

## Falling Back

Units starting the Movement phase within 1" of an enemy unit can either remain stationary or Fall Back. If you choose to Fall Back, the unit must end its move more than 1" away from all enemy units. If a unit Falls Back, it cannot Advance (see below), or charge later that turn. A unit that Falls Back also cannot shoot later that turn unless it can **FLY**.

## Advancing

When you pick a unit to move in the Movement phase, you can declare that it will Advance. Roll a dice and add the result to the Move characteristics of all models in the unit for that Movement phase. A unit that Advances can't shoot or charge later that turn.



**'SHALL WE LIE DOWN MEEKLY  
AS A LAMB BEFORE THE  
RAVENING WOLF OR SHALL  
WE OPPOSE SUCH HORRORS AS  
THE GALAXY WILL THROW AT  
US WITH PROUD CONTEMPT?  
SUFFER NOT THE BEASTS AND  
ABOMINATIONS OF OTHER  
WORLDS TO LIVE IN OUR  
IMPERIUM!'**

*- Orthas Gregoran,  
Chief Demagogue  
of the Forlan Synod*

## WOBBLY MODEL SYNDROME

Sometimes you may find that a particular piece of terrain makes it hard to put a model exactly where you want. If you delicately balance it in place, it is very likely to fall as soon as somebody nudges the table, leaving your painted model damaged or even broken. In cases like this, we find it is perfectly acceptable to leave the model in a safer position, as long as both players have agreed and know its 'actual' location. If, later on, your enemy is considering shooting the model, you will have to hold it back in the proper place so they can check if it is visible.

## REINFORCEMENTS

Many units have the ability to be set up on the battlefield mid-turn, sometimes by using teleporters, grav chutes or other, more esoteric means. Typically, this happens at the end of the Movement phase, but it can also happen during other phases. Units that are set up in this manner cannot move or Advance further during the turn they arrive – their entire Movement phase is used in deploying to the battlefield – but they can otherwise act normally (shoot, charge, etc.) for the rest of their turn. Units that arrive as reinforcements count as having moved in their Movement phase for all rules purposes, such as shooting Heavy weapons. Any unit that has not arrived on the battlefield by the end of the battle counts as having been destroyed.



## RE-ROLLS

Some rules allow you to re-roll a dice roll, which means you get to roll some or all of the dice again. You can never re-roll a dice more than once, and re-rolls happen before modifiers (if any) are applied.

## ROLL-OFFS

Some rules instruct players to roll off. To do so, both players roll a D6, and whoever scores highest wins the roll-off. In the case of a tie, both players re-roll their D6; this is the only time players can re-roll a re-roll – if the second and subsequent rolls are also tied, keep on rolling until a winner is decided.

## SEQUENCING

While playing Warhammer 40,000, you'll occasionally find that two or more rules are to be resolved at the same time – normally 'at the start of the Movement phase' or 'before the battle begins'. When this happens during the game, the player whose turn it is chooses the order. If these things occur before or after the game, or at the start or end of a battle round, the players roll off and the winner decides in what order the rules are resolved.

# 2. PSYCHIC PHASE

Warrior mystics and sorcerers wield the strange power of the warp to aid their allies and destroy their foes. Harnessing this force is not without risk, however, and with the smallest mistake, the effort can spell doom for all nearby.

## PSYCHIC SEQUENCE

1. Choose psyker and power
2. Make Psychic test
3. Enemy takes Deny the Witch test
4. Resolve psychic power

### 1. Choose Psyker and Power

Some models are noted as being a **PSYKER** on their datasheet. Psykers can manifest their otherworldly abilities and attempt to deny enemy sorceries. The powers a psyker knows, and the number of powers they can attempt to manifest or deny each Psychic phase, are detailed on their datasheet.

#### Psychic Powers

Unless stated otherwise, all psykers know the *Smite* psychic power, listed below. Some know other powers instead of, or in addition to, *Smite* – the model's datasheets and other supplementary rules you are using will make it clear which powers each psyker knows. If a psyker generates their powers before the battle, do so immediately before either player starts to deploy their army.

#### Smite

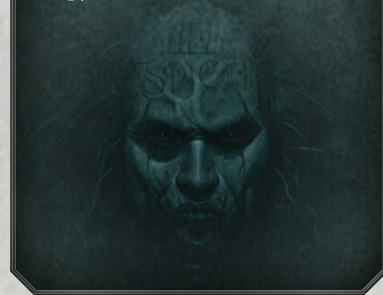
*Smite* has a warp charge value of 5. If manifested, the closest visible enemy unit within 18" of the psyker suffers D3 mortal wounds. If the result of the Psychic test was more than 10, the target suffers D6 mortal wounds instead.

### 2. Make Psychic Test

A psyker can attempt to manifest a psychic power they know by taking a Psychic test. To do so, roll 2D6. If the total is equal to or greater than that power's warp charge value, the power is successfully manifested. A psyker cannot attempt to manifest the same psychic power more than once in a turn.

### Perils of the Warp

If you roll a double 1 or a double 6 when taking a Psychic test, the psyker immediately suffers Perils of the Warp. The psyker suffers D3 mortal wounds as the forces of the Daemon-haunted warp claw at their mind. If the psyker is slain by Perils of the Warp, the power they were attempting to manifest automatically fails and each unit within 6" immediately suffers D3 mortal wounds, as the psyker is dragged into the warp or else detonates in a burst of empyric feedback.



### 3. Deny the Witch Tests

A psyker can attempt to resist a psychic power that has been manifested by an enemy model within 24" by taking a Deny the Witch test – this takes place immediately, even though it is not your turn. To do so, roll 2D6. If the total is greater than the result of the Psychic test that manifested the power, it has been resisted and its effects are negated. Only one attempt to deny each successfully manifested psychic power can be made each turn, regardless of the number of psykers you have within 24" of the enemy model manifesting the psychic power.

### 4. Resolve Psychic Power

So long as the Psychic test was successful, the psyker did not die as a result of the Perils of the Warp, and the attempt was not thwarted by a Deny the Witch test, then you may resolve the effect of the psychic power, which will be described in the power itself.



## 3. SHOOTING PHASE

Guns thunder and shrapnel falls from the sky. Muzzle flare shines through the gloom in bursts, beams of las-fire illuminate the fog of war, and spent ammunition cartridges and power cells are left discarded across the battlefield.

### SHOOTING SEQUENCE

1. Choose unit to shoot with
2. Choose targets
3. Choose ranged weapon
4. Resolve attacks
  - Make hit roll
  - Make wound roll
  - Enemy allocates wound
  - Enemy makes saving throw
  - Inflict damage

#### 1. Choose Unit to Shoot With

In your Shooting phase you can shoot with models armed with ranged weapons. First, you must pick one of your units to shoot with. You may not pick a unit that Advanced or Fell Back this turn, or a unit that is within 1" of an enemy unit. Unless otherwise stated, each model in the unit attacks with all of the ranged weapons it is armed with. After all of the unit's models have fired, you can choose another unit to shoot with, until all eligible units that you want to shoot with have done so.

#### 2. Choose Targets

Having chosen a shooting unit, you must pick the target unit, or units, for the attacks. In order to target an enemy unit, a model from that unit must be within the Range of the weapon being used (as listed on its profile) and be visible to the shooting model. If unsure, stoop down and get a look from behind the shooting model to see if any part of the target is visible. For the purposes of determining visibility, a model can see through other models in its own unit.

Models cannot target enemy units that are within 1" of friendly models – the risk of hitting your own troops is too great.

#### 3. Choose Ranged Weapon

The weapons a model has are listed on its datasheet. If a model has several weapons, it can shoot all of them at the same target, or it can shoot each at a different enemy unit. Similarly, if a unit contains more than one model, they can shoot at the same, or different targets as you choose. In either case, declare how you will split the shooting unit's shots before any dice are rolled, and resolve all the shots against one target before moving on to the next.

#### Number of Attacks

Each time a model shoots a ranged weapon, it will make a number of attacks. You roll one dice for each attack being made. The number of attacks a model can make with a weapon, and therefore the number of dice you can roll, is found on the weapon's profile, along with the weapon's type. A weapon's type can impact the number of attacks it can make (see overleaf).

### Characters

Some models are noted as being a **CHARACTER** on their datasheet. These heroes, officers, prophets and warlords are powerful individuals that can have a great impact on the course of a battle. The swirling maelstrom of the battlefield can make it difficult to pick out such individuals as targets, however. A **CHARACTER** can only be chosen as a target in the Shooting phase if they are the closest visible enemy unit to the model that is shooting. This does not apply to **CHARACTERS** with a Wounds characteristic of 10 or more, due to their sheer size.

### FAST DICE ROLLING

The rules for resolving attacks have been written assuming you will make them one at a time.

However, it is possible to speed up your battles by rolling the dice for similar attacks together. In order to make several attacks at once, all of the attacks must have the same Ballistic Skill (if it's a shooting attack) or the same Weapon Skill (if it's a close combat attack). They must also have the same Strength, Armour Penetration and Damage characteristics, and they must be directed at the same unit. If this is the case, make all of the hit rolls at the same time, then all of the wound rolls. Your opponent can then allocate the wounds one at a time, making the saving throws and suffering damage each time as appropriate. Remember, if the target unit contains a model that has already lost any wounds, they must allocate further wounds to this model until either it is slain, or all the wounds have been saved or resolved.

### AURA ABILITIES

Some units – usually **CHARACTERS** – have abilities that affect certain models within a given range. Unless the ability in question says otherwise, a model with a rule like this is always within range of the effect.

For example, a Lord of Contagion has the Nurgle's Gift ability, which affects all **DEATH GUARD** models within 7" of him. As the Lord of Contagion is also a **DEATH GUARD** model, he benefits from this ability as well.





## THE MOST IMPORTANT RULE

*In a game as detailed and wide-ranging as Warhammer 40,000, there may be times when you are not sure exactly how to resolve a situation that has come up during play. When this happens, have a quick chat with your opponent and apply the solution that makes the most sense to both of you (or seems the most fun!). If no single solution presents itself, you and your opponent should roll off, and whoever rolls highest gets to choose what happens. Then you can get on with the fighting!*



## Weapon Types

There are five types of ranged weapon: Assault, Heavy, Rapid Fire, Grenade and Pistol. A model shooting one of these weapons can make a number of attacks equal to the number written on its profile after its type. For example, a model firing an 'Assault 1' weapon can make 1 attack with that weapon; a model firing a 'Heavy 3' weapon can make 3 attacks, etc.

If a weapon has more than one attack, it must make all of its attacks against the same target unit.

Each type of ranged weapon also has an additional rule that, depending upon the situation, might affect the accuracy of the weapon or when it can be fired. These are as follows:

### ASSAULT

**Assault weapons fire so rapidly or indiscriminately that they can be shot from the hip as warriors dash forwards into combat.**

A model with an Assault weapon can fire it even if it Advanced earlier that turn. If it does so, you must subtract 1 from any hit rolls made when firing that weapon this turn.

### HEAVY

**Heavy weapons are the biggest and deadliest guns on the battlefield, but require reloading, careful set-up or bracing to fire at full effect.**

If a model with a Heavy weapon moved in its preceding Movement phase, you must subtract 1 from any hit rolls made when firing that weapon this turn.

### RAPID FIRE

**Rapid Fire weapons are versatile weapons capable of aimed single shots at long range or controlled bursts of fire at close quarters.**

A model firing a Rapid Fire weapon doubles the number of attacks it makes if its target is within half the weapon's maximum range.

### GRENADE

**Grenades are handheld explosive devices that a warrior throws at the enemy while their squad mates provide covering fire.**

Each time a unit shoots, a single model in the unit that is equipped with Grenades may throw one instead of firing any other weapon.

### PISTOL

**Pistols are carried one-handed and can even be used in a melee to shoot at point-blank range. Many warriors carry one as a sidearm, alongside their primary weapon.**

A model can fire a Pistol even if there are enemy units within 1" of its own unit, but it must target the closest enemy unit. In such circumstances, the model can shoot its Pistol even if other friendly units are within 1" of the same enemy unit.

Each time a model equipped with both a Pistol and another type of ranged weapon (e.g. a Pistol and a Rapid Fire weapon) shoots, it can either shoot with its Pistol(s) or with all of its other weapons. Choose which it will fire (Pistols or non-Pistols) before making hit rolls.

**'AS OUR BODIES ARE ARMoured WITH ADAMANT,  
OUR SOULS ARE PROTECTED WITH LOYALTY.**

**AS OUR BOLTERS ARE CHARGED WITH DEATH FOR THE EMPEROR'S  
ENEMIES, OUR THOUGHTS ARE CHARGED WITH WISDOM.**

**AS OUR RANKS ADVANCE, SO DOES OUR DEVOTION,  
FOR ARE WE NOT THE SPACE MARINES?**

**ARE WE NOT THE CHOSEN OF THE EMPEROR,  
HIS LOYAL SERVANTS UNTO DEATH?**



#### 4. Resolve Attacks

Attacks can be made one at a time, or, in some cases, you can roll for multiple attacks together. The following sequence is used to make attacks one at a time:

**1. Hit Roll:** Each time a model makes an attack, roll a dice. If the roll is equal to or greater than the attacking model's Ballistic Skill characteristic, then it scores a hit with the weapon it is using. If not, the attack fails and the attack sequence ends. A roll of 1 always fails, irrespective of any modifiers that may apply.

**2. Wound Roll:** If an attack scores a hit, you will then need to roll another dice to see if the attack successfully wounds the target. The roll required is determined by comparing the attacking weapon's Strength characteristic with the target's Toughness characteristic, as shown on the following table:

WOUND ROLL	
ATTACK'S STRENGTH VS TARGET'S TOUGHNESS	D6 ROLL REQUIRED
Is the Strength <b>TWICE (or more)</b> than the Toughness?	2+
Is the Strength <b>GREATER</b> than the Toughness?	3+
Is the Strength <b>EQUAL</b> to the Toughness?	4+
Is the Strength <b>LOWER</b> than the Toughness?	5+
Is the Strength <b>HALF (or less)</b> than the Toughness?	6+

If the roll is less than the required number, the attack fails and the attack sequence ends. A roll of 1 always fails, irrespective of any modifiers that may apply.

**3. Allocate Wound:** If an attack successfully wounds the target, the player commanding the target unit allocates the wound to any model in the unit (the chosen model does not have to be within range or visible to the attacking unit). If a model in the target unit has already lost any wounds, the damage must be allocated to that model.

**4. Saving Throw:** The player commanding the target unit then makes a saving throw by rolling a dice and modifying the roll by the Armour Penetration characteristic of the weapon that caused the damage. For example, if the weapon has an Armour Penetration of -1, then 1 is subtracted from the saving throw roll. If the result is equal to, or greater than, the Save characteristic of the model the wound was allocated to, then the damage is prevented and the attack sequence ends. If the result is less than the model's Save characteristic, then the saving throw fails and the model suffers damage. A roll of 1 always fails, irrespective of any modifiers that may apply.

**5. Inflict Damage:** The damage inflicted is equal to the Damage characteristic of the weapon used in the attack. A model loses one wound for each point of damage it suffers. If a model's wounds are reduced to 0, it is either slain or destroyed and removed from play. If a model loses several wounds from a single attack and is destroyed, any excess damage inflicted by that attack is lost and has no effect.



#### Invulnerable Saves

Some models possess supernatural reflexes or are protected by force fields that grant them an invulnerable save. Each time a wound is allocated to a model with an invulnerable save, you can choose to use either its normal Save characteristic or its invulnerable save, but not both. If a model has more than one invulnerable save, it can only use one of them – choose which it will use. If you use a model's invulnerable save, it is never modified by a weapon's Armour Penetration value.

#### Terrain and Cover

The battlefields of the far future are littered with terrain features such as ruins, craters and twisted corpses. Models can take shelter within such terrain features to gain protection against incoming weapons' fire.

If a unit is entirely on or within any terrain feature, add 1 to its models' saving throws against shooting attacks to represent the cover received from the terrain (invulnerable saves are unaffected). Units gain no benefit from cover in the Fight phase.

#### Mortal Wounds

Some attacks inflict mortal wounds – these are so powerful that no armour or force field can withstand their fury. Each mortal wound inflicts one point of damage on the target unit. Do not make a wound roll or saving throw (including invulnerable saves) against a mortal wound – just allocate it as you would any other wound and inflict damage to a model in the target unit as described above. Unlike normal attacks, excess damage from attacks that inflict mortal wounds is not lost. Instead keep allocating damage to another model in the target unit until either all the damage has been allocated or the target unit is destroyed.



## 4. CHARGE PHASE

Warriors hurl themselves into battle to slay with blade, hammer and claw.

### CHARGE SEQUENCE

1. Choose unit to charge with
2. Choose targets
3. Enemy resolves Overwatch
4. Roll 2D6 and make charge move

#### 1. Choose Unit to Charge With

Any of your units within 12" of the enemy in your Charge phase can make a charge move. You may not choose a unit that Advanced or Fell Back this turn, nor one that started the Charge phase within 1" of an enemy.

#### 2. Choose Targets

Once you have chosen an eligible unit, select one or more enemy units within 12" of them as the target(s) of the charge. Each target unit can then attempt to fire Overwatch.

#### 3. Overwatch

Each time a charge is declared against a unit, the target unit can immediately fire Overwatch at the would-be attacker. A target unit can potentially fire Overwatch several times a turn, though it cannot fire if there are any enemy models within 1" of it. Overwatch is resolved like a normal shooting attack (albeit one resolved in the enemy's Charge phase) and uses all the normal rules except that a 6 is always required for a successful hit roll, irrespective of the firing model's Ballistic Skill or any modifiers.

#### 4. Make Charge Move

After any Overwatch has been resolved, roll 2D6. Each model in the charging unit can move up to this number of inches – this is their charge distance this turn. The first model you move must finish within 1" of an enemy model from one of the target units. No models in the charging unit can move within 1" of an enemy unit that was not a target of its charge. If this is impossible, the charge fails and no models in the charging unit move this phase. Once you've moved all the models in the charging unit, choose another eligible unit and repeat the above procedure until all eligible units that you want to make charge moves have done so. No unit can be selected to charge more than once in each Charge phase.

### Heroic Intervention

After the enemy has completed all of their charge moves, any of your **CHARACTERS** that are within 3" of an enemy unit may perform a Heroic Intervention. Any that do so can move up to 3", so long as they end the move closer to the nearest enemy model.

## 5. FIGHT PHASE

Carnage engulfs the battlefield as the warring armies tear each other apart.

### FIGHT SEQUENCE

1. Choose unit to fight with
2. Pile in up to 3"
3. Choose targets
4. Choose melee weapon
5. Resolve close combat attacks
  - Make hit roll
  - Make wound roll
  - Enemy allocates wound
  - Enemy makes saving throw
  - Inflict damage
6. Consolidate up to 3"

#### 1. Choose Unit to Fight With

Any unit that charged or has models within 1" of an enemy unit can be chosen to fight in the Fight phase. This includes all units, not just those controlled by the player whose turn it is. All units that charged this turn fight first. The player whose turn it is picks the order in which these units fight. After all charging units have fought, the players alternate choosing eligible units to fight with (starting with the player whose turn it is) until all eligible units on both sides have fought once each. No unit can be selected to fight more than once in each Fight phase. If one player runs out of eligible units, the other player completes all of their remaining fights, one unit after another. A fight is resolved in the following steps:

#### 2. Pile In

You may move each model in the unit up to 3" – this move can be in any direction so long as the model ends the move closer to the nearest enemy model.

#### 3. Choose Targets

First, you must pick the target unit, or units, for the attacks. To target an enemy unit, the attacking model must either be within 1" of that unit, or within 1" of another model from its own unit that is itself within 1" of that enemy unit. This represents the unit fighting in two ranks. Models that charged this turn can only target enemy units that they charged in the previous phase.

If a model can make more than one close combat attack (see right), it can split them between eligible target units as you wish. Similarly if a unit contains more than one model, each can target a different enemy unit. In either case, declare how you will split the unit's close combat attacks before any dice are rolled, and resolve all attacks against one target before moving on to the next.



### Number of Attacks

The number of close combat attacks a model makes against its target is determined by its Attacks characteristic. You roll one dice for each close combat attack being made. For example, if a model has an Attacks characteristic of 2, it can make 2 close combat attacks and you can therefore roll 2 dice.

### 4. Choose Melee Weapon

Each time a model makes a close combat attack, it uses a melee weapon – the weapons a model is equipped with are described on its datasheet. If a datasheet does not list any melee weapons, the model is assumed to fight with a close combat weapon, which has the following profile:

WEAPON	RANGE	TYPE	S	AP	D
Close combat weapon	Melee	Melee	User	-	1

If a model has more than one melee weapon, choose which it will use before rolling the dice. If a model has more than one melee weapon and can make several close combat attacks, it can split its attacks between these weapons however you wish – declare how you will divide the attacks before any dice are rolled.

### 5. Resolve Close Combat Attacks

Close combat attacks can be made one at a time, or in some cases you can roll the dice for a number of attacks together. The attack sequence for making close combat attacks is identical to that used for shooting attacks except you use the model's Weapon Skill characteristic instead of its Ballistic Skill to make hit rolls.

### 6. Consolidate

You may move each model in the unit up to 3" – this move can be in any direction so long as the model ends the move closer to the nearest enemy model.

## 6. MORALE PHASE

**Even the bravest heart may quail when the horrors of battle take their toll.**

In the Morale phase, starting with the player whose turn it is, players must take Morale tests for units from their army that have had models slain during the turn.

To take a Morale test, roll a dice and add the number of models from the unit that have been slain this turn. If the result of the Morale test exceeds the highest Leadership characteristic in the unit, the test is failed. For each point that the test is failed by, one model in that unit must flee and is removed from play. You choose which models flee from the units you command.

## TRANSPORTS

Some models are noted as being a **TRANSPORT** on their datasheet – these vehicles ferry warriors to the front line, providing them with speed and protection. The following rules describe how units can embark and disembark from transports, and how they are used to move their passengers across the battlefield. Note that a unit cannot both embark and disembark in the same turn.

**Transport Capacity:** All transports have a transport capacity listed on their datasheet. This determines how many friendly models, and of what type, they can carry. A model's transport capacity can never be exceeded.

When you set up a transport, units can start the battle embarked within it instead of being set up separately – declare what units are embarked inside the transport when you set it up.

**Embark:** If all models in a unit end their move within 3" of a friendly transport, they can embark within it. Remove the unit from the battlefield and place it to one side – it is now embarked inside the transport.

Embarked units cannot normally do anything or be affected in any way whilst they are embarked. Unless specifically stated, abilities that affect other units within a certain range have no effect whilst the unit that has the ability is embarked.

If a transport is destroyed, any units embarked within it immediately disembark (see below) before the transport model is removed, but you must then roll one dice for each model you just set up on the battlefield. For each roll of 1, a model that disembarked (your choice) is slain.

**Disembark:** Any unit that begins its Movement phase embarked within a transport can disembark before the transport moves. When a unit disembarks, set it up on the battlefield so that all of its models are within 3" of the transport and not within 1" of any enemy models – any disembarking model that cannot be set up in this way is slain.

Units that disembark can then act normally (move, shoot, charge, fight, etc.) during the remainder of their turn. Note though, that even if you don't move disembarking units further in your Movement phase, they still count as having moved for any rules purposes, such as shooting Heavy weapons.





# EXAMPLE TURN

On these pages you will find an example turn of Warhammer 40,000. All six phases of a player's turn are described. In the examples shown below, it is the Death Guard player's turn, and we join the battle just as they are about to launch an assault upon a force of Space Marines.

## 1. MOVEMENT PHASE

The Death Guard player starts by moving their unit of Plague Marines. They have a Move characteristic of 5", and so are moved as close as possible towards the Space Marines.

The Death Guard player then moves their Malignant Plaguecaster, and decides this model should Advance...



The player rolls a D6, scoring a 4. The Malignant Plaguecaster (Move 5"), can therefore move up to 9".



## 2. PSYCHIC PHASE

The Death Guard only has a single psyker – the Malignant Plaguecaster. This model attempts to manifest the *Smite* power.

The Death Guard player takes a Psychic test by rolling 2D6, and scores a total of 6. This is greater than the power's warp charge value of 5, so the test is passed.

$$1 + 5 = 6$$

The closest enemy unit are the Intercessors. They suffer D3 mortal wounds. The Death Guard player rolls a 5, which means the Intercessor Squad loses 3 wounds, enough to kill one Intercessor and wound another.

$$5 \div 2 \text{ rounds to } 3$$



## 3. SHOOTING PHASE

The Death Guard player selects the unit of Plague Marines to shoot with. The Plague Marines will shoot with their boltguns, while the Plague Champion will throw a krak grenade.

The targets are 6" away, which is within range of the Plague Marines' **boltguns**. These are Rapid Fire 1 weapons, and so each fires twice at half range or less. The Death Guard player therefore rolls 8 dice to see if the shots hit. The Plague Marines' Ballistic Skill is 3+, so 6 shots hit and the others miss.



The Death Guard player then makes a wound roll for each hit. A **boltgun's** Strength of 4 equals the target's Toughness of 4, meaning a roll of 4+ is required to successfully wound the target. The Death Guard player rolls for each shot, four of which are successful. The Space Marine player will now need to make a saving throw for each.



One of the rolls is less than the Intercessor's Save characteristic of 3+, so the wound is allocated to the wounded Intercessor. A **boltgun** inflicts 1 point of damage on this model, which removes its last wound and it is slain. The other wounds are saved and bounce off the Space Marines' power armour.





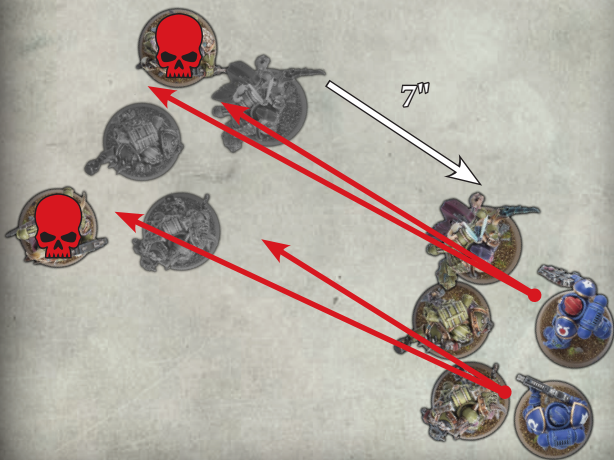
## 4. CHARGE PHASE

The Death Guard player chooses the Plague Marines to charge the Intercessors.

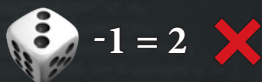
The Space Marine player fires Overwatch and makes 4 hit rolls. Models only hit on 6s when firing Overwatch, however both hits go on to wound, and then both saving throws are failed – two models are slain!



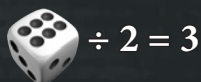
After resolving Overwatch, the Death Guard player rolls 2D6, scoring 7. The Plague Marines can charge 7" – enough to move within 1" of the Intercessors.



The Plague Champion then throws a **krak grenade**, which hits. This grenade has a Strength of 6, which wounds the Intercessors on a roll of 3+ as its Strength is greater than the Intercessors' Toughness. The Space Marine player then rolls a 3 for their saving throw, but must subtract 1 from the roll because the **krak grenade** has an AP characteristic of -1. The final result of 2 fails to protect the Space Marines.



A **krak grenade** inflicts D3 damage; the Death Guard player rolls a 6, inflicting 3 points of damage. This causes an Intercessor to lose both its wounds. As it is slain by this attack, the other point of damage is discarded and has no effect.



## 5. FIGHT PHASE

Units that charged always resolve their fights first. In this case, that means the Plague Marines unit fights first.

They start by piling in, each model moving up to 3" closer to the nearest model. All are now within 1" of an enemy.

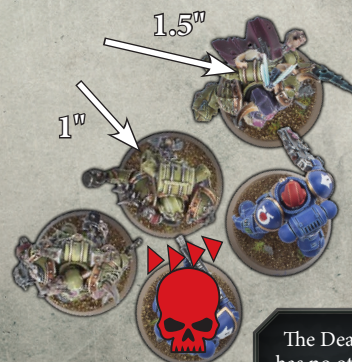


The Plague Marines will use their plague knives to make their close combat attacks against the Intercessor unit, but the Plague Champion, who has an Attacks characteristic of 2, chooses to make 1 close combat attack using his **plague sword**, and 1 using his **power fist**. The Death Guard player rolls 2 hit rolls for the plague knives (rolling a 3 and a 5), 1 for the **plague sword** (rolling a 3), and 1 for the **power fist** (rolling a 2).



Plague sword Power fist

The Plague Marines and the Plague Champion both have a Weapon Skill characteristic of 3+, so the attack made with the **power fist** misses, but all the others hit. After wound rolls and saving throws are taken, another Intercessor has been slain. The Plague Marine unit then **consolidates** ▶▶▶▶, one of its models moving closer to the nearest enemy model.



The Death Guard player has no other units that can fight, so the Space Marine unit fights, slaying a single Plague Marine in return.

## 6. MORALE PHASE

Both the Plague Marine unit and the Intercessors have suffered casualties during the turn, and so both have to take a Morale test.

The Death Guard player goes first, rolling a 6. Three Plague Marines died this turn, so 3 is added to the roll, for a total of 9. This exceeds the highest Leadership in the unit by 1 (the Plague Champion has a Leadership characteristic of 8), so 1 of the remaining models flees the battlefield.

The Space Marine player then takes a Morale test for the Intercessors, rolling a 3. When the number of casualties is added they have a total of 7. This is less than the unit's highest Leadership of 8 – the test is passed and no models flee.

The Death Guard turn is now complete, and the Space Marine player can now start their turn.



# DATASHEETS

The warriors, monsters and war machines that fight for control of the galaxy are incredibly diverse, each with their own style of waging war. Each unit has a datasheet that lists the characteristics, wargear and abilities of the models in that unit – here we explain what some of it means, while the core rules explain how it's all used in the game.

## 1. Unit Name

Models move and fight in units, which can have one or more models. Here you'll find the name of the unit.

## 2. Battlefield Role

This is typically used when making a Battle-forged army as described in the Warhammer 40,000 rulebook.

## 3. Power Rating

The higher this is, the more powerful the unit! You can determine the Power Level of your entire army by adding up the Power Ratings of all the units in your army.

## 4. Profiles

These contain the following characteristics that tell you how mighty the models in the unit are:

**Move (M):** This is the speed at which a model moves across the battlefield.

**Weapon Skill (WS):** This tells you a model's skill at hand-to-hand fighting. If a model has a Weapon Skill of '-' it is unable to fight in melee and cannot make close combat attacks at all.

**Ballistic Skill (BS):** This shows how accurate a model is when shooting

with ranged weapons. If a model has a Ballistic Skill of '-' it has no proficiency with ranged weapons and cannot make shooting attacks at all.

**Strength (S):** This indicates how strong a model is and how likely it is to inflict damage in hand-to-hand combat.

**Toughness (T):** This reflects the model's resilience against physical harm.

**Wounds (W):** Wounds show how much damage a model can sustain before it succumbs to its injuries.

1
2
3

4
5

6
7

8
9

10

11

12

13

14

15

16

17

18

19

20

21

22

23

24

25

26

27

28

29

30

31

32

33

34

35

36

37

38

39

40

41

42

43

44

45

46

47

48

49

50

51

52

53

54

55

56

57

58

59

60

61

62

63

64

65

66

67

68

69

70

71

72

73

74

75

76

77

78

79

80

81

82

83

84

85

86

87

88

89

90

91

92

93

94

95

96

97

98

99

100

101

102

103

104

105

106

107

108

109

110

111

112

113

114

115

116

117

118

119

120

121

122

123

124

125

126

127

128

129

130

131

132

133

134

135

136

137

138



**Attacks (A):** This tells you how many times a model can strike blows in hand-to-hand combat.

**Leadership (Ld):** This reveals how courageous, determined or self-controlled a model is.

**Save (Sv):** This indicates the protection a model's armour gives.

## 5. Unit Composition

This tells you what models are in the unit.

## 6. Wargear

This covers the basic weapons and equipment the models are armed with.

## 7. Abilities

Many units have exciting special abilities that are not covered by the core rules; these will be described here.

## 8. Weapons

The weapons that a unit comes equipped with are described using a set of characteristics as follows:

**Range:** How far the weapon can shoot. Weapons with a range of 'Melee' can only be used in hand-to-hand combat. All other weapons are referred to as ranged weapons.

**Type:** These are all explained under the Shooting and Fight phases of the core rules.

**Strength (S):** How likely the weapon is to inflict damage. If a weapon's Strength lists 'User', it is equal to the wielder's current Strength. If a weapon lists a modifier such as '+1' or 'x2', you should modify the user's current Strength characteristic as shown to determine the weapon's Strength. For example, if a weapon's Strength was 'x2', and the user had a Strength characteristic of 6, that weapon has Strength 12.

**Armour Penetration (AP):** How good it is at getting through armour.

**Damage (D):** The amount of damage inflicted by a successful hit.

Other weapons, for example those a unit may take as an optional choice, are typically described elsewhere, such as in a codex.

## 9. Keywords

All datasheets have a list of keywords, sometimes separated into Faction keywords and other keywords. The former can be used as a guide to help decide which models to include in your army, but otherwise both sets of keywords are functionally the same. Sometimes a rule will say that it applies to models that have a specific keyword. For example, a rule might say that it applies to 'all **ADEPTUS ASTARTES** models'. This means it would only apply to models that have the Adeptus Astartes keyword on their datasheet.

## MODIFYING CHARACTERISTICS

Some large models' characteristics can change as the model suffers damage – look at such a model's remaining wounds and consult the appropriate row of the chart on their datasheet to determine its current characteristics.

You may also encounter abilities and rules that modify a characteristic. All modifiers are cumulative, though you should apply any multiplication or division to the characteristic (rounding fractions up) before applying any addition or subtraction.

You may encounter a characteristic that is a random value instead of a number. For example, a Move characteristic might be 2D6", or an Attacks value might be D6. When a unit with a random Move characteristic is selected to move, determine the entire unit's move distance by rolling the indicated number of dice. For all other characteristics, roll to determine the value on an individual – per-model – basis each time the unit makes attacks, inflicts damage, and so on. Note that, regardless of the source, characteristics of '-' can never be modified, and the Strength, Toughness and Leadership characteristics of a model can never be modified below 1.

# WARHAMMER 40,000 CODEXES

So now you know what a datasheet is and how it works – in conjunction with the core rules that follow (plus your Citadel Miniatures, battlefield, dice and tape measure, of course!), you've got everything you need to start playing games of Warhammer 40,000 and dive into epic battle.

But where do you find datasheets? Well, when you buy a box of Citadel Miniatures they'll be in the box with them, and they are also present in codexes. A codex is the ultimate resource for your chosen army (or armies!), containing datasheets for all the miniatures that are part of a particular Faction. But that's not all – in codexes you'll also find army-specific special rules that reflect the character of the army, exciting Warlord Traits, Stratagems, wargear, and even unique relics.

Each codex is also filled with a wealth of inspirational background material, organisational information, stunning art and miniatures photography, colour guides and heraldry, all of which provide context for how a Faction works in the Warhammer 40,000 universe. Head over to [games-workshop.com](http://games-workshop.com) to find out more.



*‘There can be no bystanders in the battle for survival. Anyone who will not fight by your side is an enemy you must crush.’*

*- Scriptorus Munificentus*



# FIGHTING A BATTLE

## THE MISSION

Before you can wage war in a game of Warhammer 40,000, you must select a mission. The core rules include a single mission – Only War – which is ideal to get the action started quickly. Others can be found in other books, or you could play a mission of your own creation. If you and your opponent can't agree on which mission to play, both players should roll a dice, re-rolling ties, and whoever rolls the highest decides on the mission.

## THE BATTLEFIELD

In the far future, battles are fought across an infinite variety of strange and alien planets where no land is left untouched by the blight of war. Crystal moons, derelict space hulks, carnivorous death worlds and nightmarish Daemon worlds are just a few of the fantastical landscapes that can be recreated whenever you play a game of Warhammer 40,000.

A battlefield can be any surface upon which the models can stand – a dining table, for example, or the floor. We typically assume a battlefield is 6' by 4' (although some missions will state other dimensions), but it should always be large enough to accommodate all your models – if it is not, simply increase the size of the battlefield.

Unless the mission you are playing instructs you otherwise, you should then feel free to create an exciting battlefield using any terrain features from your collection that you wish. In general, we recommend having one or two features in each 2' by 2' area. Don't worry if your battlefield doesn't match these requirements, but keep in mind that playing on very small or very large battlefields, or ones that are either a barren wasteland or filled to overflowing with terrain features, may give an advantage to one side or the other.



## BATTLEZONES & EXPANSIONS

If you are battling in a specific battlezone, or if you are using a particular expansion, there might be additional rules pertaining to setting up the battlefield, and special rules that alter how some terrain interacts with your warriors. Bear these in mind when creating your battlefield.

## THE WARLORD

Once you have mustered your army, nominate one of your models to be your Warlord.

If your Warlord is a **CHARACTER**, it can use a Warlord Trait – a preferred tactic or personal ability that marks them out amongst their peers. Immediately before either player starts to deploy their army, you can roll on the Warlord Trait table here to determine what Warlord Trait your Warlord has. Alternatively, choose the trait that most suits your Warlord's temperament or style of war.

## WARLORD TRAITS

### 03 WARLORD TRAIT

- 1 **Legendary Fighter:** If this Warlord charges in the Charge phase, add 1 to their Attacks characteristic until the end of the ensuing Fight phase.
- 2 **Inspiring Leader:** Friendly units within 6" of this Warlord can add 1 to their Leadership characteristic.
- 3 **Tenacious Survivor:** Roll a dice each time this Warlord loses a wound. On a 6, the Warlord shrugs off the damage and does not lose the wound.



# ONLY WAR

The time has come to prove your worth as the greatest warlord in the galaxy! All that stands between you and ultimate glory is an enemy army bent upon your destruction.

## THE ARMIES

In order to play this mission, you must first muster an army from the miniatures in your collection. You can include any models in your army.

Sometimes you may find that you do not have enough models to field a minimum-sized unit (this can be found on each unit's datasheet); if this is the case, you can still include one unit of that type in your army with as many models as you have available.

## THE BATTLEFIELD

Create the battlefield and set up terrain. The players must then place objective markers to represent sites of tactical or strategic import that one or both armies are attempting to secure. Objective markers can be represented by any suitable marker or piece of terrain. Each player must place two objective markers anywhere on the battlefield, so long as they are each at least 10" away from any other objective marker. We suggest taking turns to place these, starting with whichever player wins a roll-off. A player controls an objective marker if there are more models from their army within 3" of it than there are enemy models (measure to the centre of the marker).

## PRIMARY OBJECTIVES

Before setting up their armies, both players roll off. The player who rolls higher then rolls on the primary objectives table (see right) to determine which are used during the mission.

## DEPLOYMENT

Once the victory conditions have been determined, the player who did not roll on the primary objectives table then divides the battlefield into two equal-sized halves. Their opponent then decides which half is their own deployment zone, and which half is the other player's deployment zone.

The players then alternate deploying their units, one at a time, starting with the player who did not pick their deployment zone. Models must be set up in their own deployment zone, more than 12" from the enemy deployment zone. Continue setting up units until both players have set up all the units in their army, or you have run out of room to set up more units.

## POWER LEVEL

Before battle begins, determine each army's Power Level by adding together the Power Ratings of all the units set up in that army; whichever player has the lowest is the Underdog. If both have the same Power Level, the player who assigned the deployment zones is the Underdog.

If the difference between the Power Levels of the two armies is 10 to 19, the Underdog receives one Command re-roll; if the difference is 20 to 29, the Underdog receives two Command re-rolls, and so on. Each Command re-roll can be used once, at any point during the battle, to re-roll a single dice.

## FIRST TURN

The Underdog chooses who has the first turn.

## BATTLE LENGTH

The battle lasts for five battle rounds, or until one army has slain all of its foes.

## VICTORY CONDITIONS

If one army has slain all of its foes, it immediately wins a major victory. Otherwise, at the end of the battle, the player who has the most victory points wins a major victory. If both players have the same number of victory points at the end of the battle, the Underdog wins a minor victory.

### PRIMARY OBJECTIVES

#### D3 VICTORY CONDITIONS

- |   |  |
|---|--|
| 1 | <b>Slay and Secure:</b> At the end of the battle, each objective marker is worth 2 victory points to the player who controls it. Players also earn D3 victory points if the opposing army's Warlord was slain during the battle.   |
| 2 | <b>Ancient Relic:</b> At the start of the first battle round, but before the first turn begins, randomly select one objective marker; remove the other objective markers from the battlefield. At the end of the battle, the remaining objective marker is worth 6 victory points to the player who controls it. |
| 3 | <b>Domination:</b> At the end of each turn, each objective marker is worth 1 victory point to the player who controls it. Keep a running score from turn to turn.  |