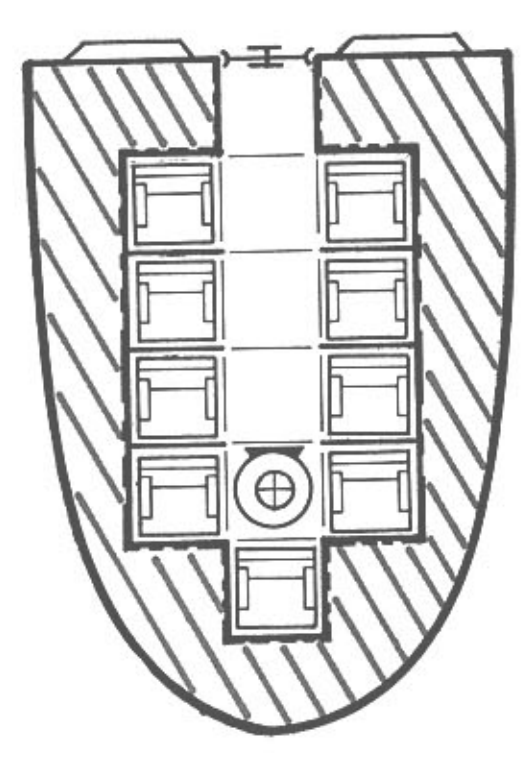


launch lb-0101101-000000-00000-0 mcr 14 20 tons  
crew 1 TL passengers 8 cargo 9 fuel 1 EP 4  
agility 1 bridge

## LAUNCH LIFE BOAT



# SIMBA SAFARI

SAFARI K-2121211-03000-0-20000-0 mcr 92.928 200 tons  
Batteries Bearing 1 1 crew 6 TL 14  
Batteries 1 1  
High Guard 2  
passengers 8 cargo 2 fuel 50 EP 4 hardpoints 1 agility 2  
cages 10 ton atmospheric 23 ton marine

Subsector \_\_\_\_\_ Sector \_\_\_\_\_

Date \_\_\_\_\_ Authority \_\_\_\_\_

Name	Location	Statistics	Remarks
------	----------	------------	---------

[illegible]

A large hexagonal grid of 120 cells arranged in 10 rows and 6 columns. Each cell contains a three-digit number. The numbers are organized by row and column, with the first column containing numbers from 1731 to 1740, the second from 1831 to 1840, the third from 1931 to 1940, the fourth from 2031 to 2040, the fifth from 2131 to 2140, and the sixth from 2231 to 2240. The grid is set against a black background with white borders.

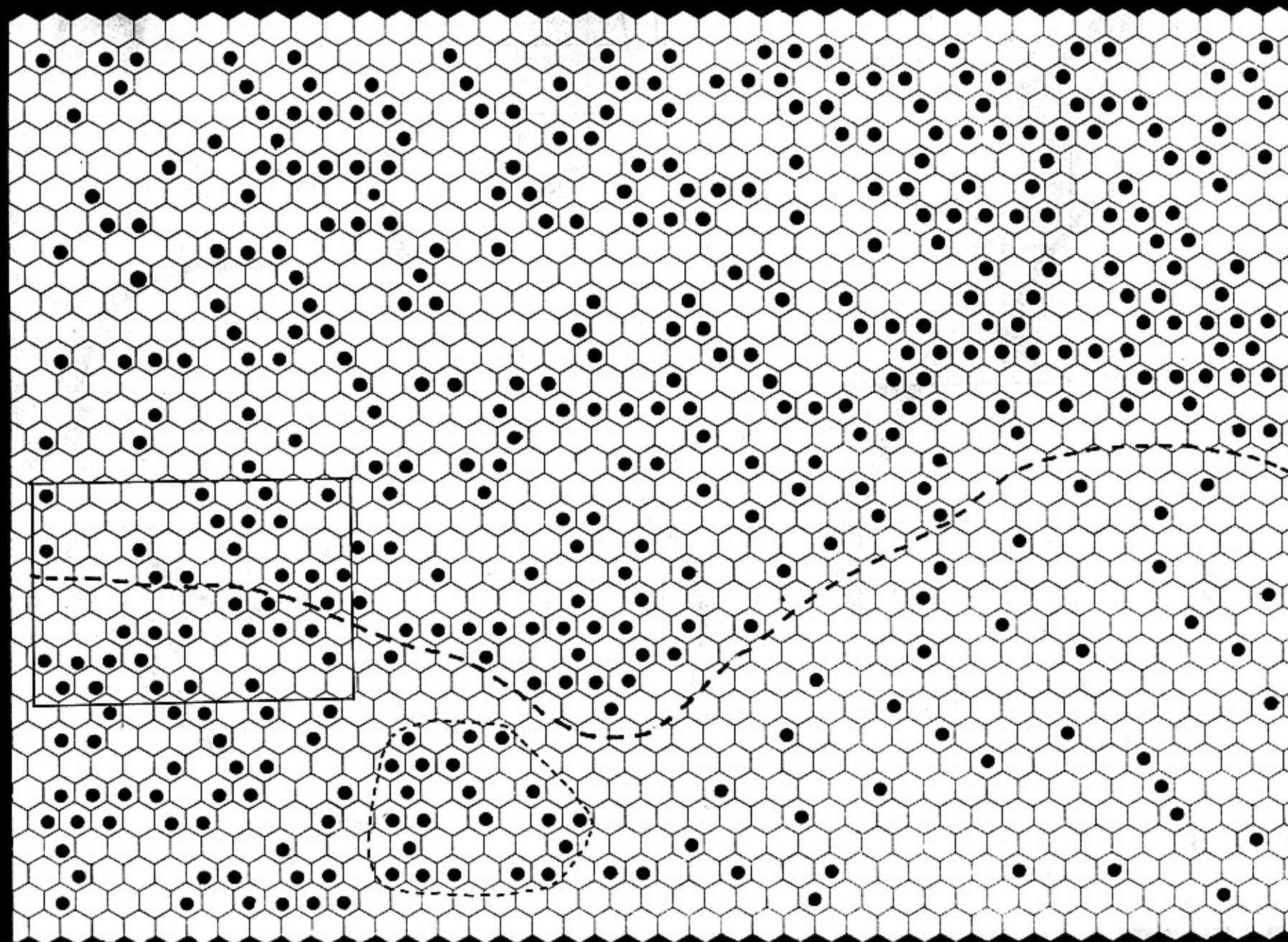
1731	1831	1931	2031	2131	2231
1732	1832	1932	2032	2132	2232
1733	1833	1933	2033	2133	2233
1734	1834	1934	2034	2134	2234
1735	1835	1935	2035	2135	2235
1736	1836	1936	2036	2136	2236
1737	1837	1937	2037	2137	2237
1738	1838	1938	2038	2138	2238
1739	1839	1939	2039	2139	2239
1740	1840	1940	2040	2140	2240

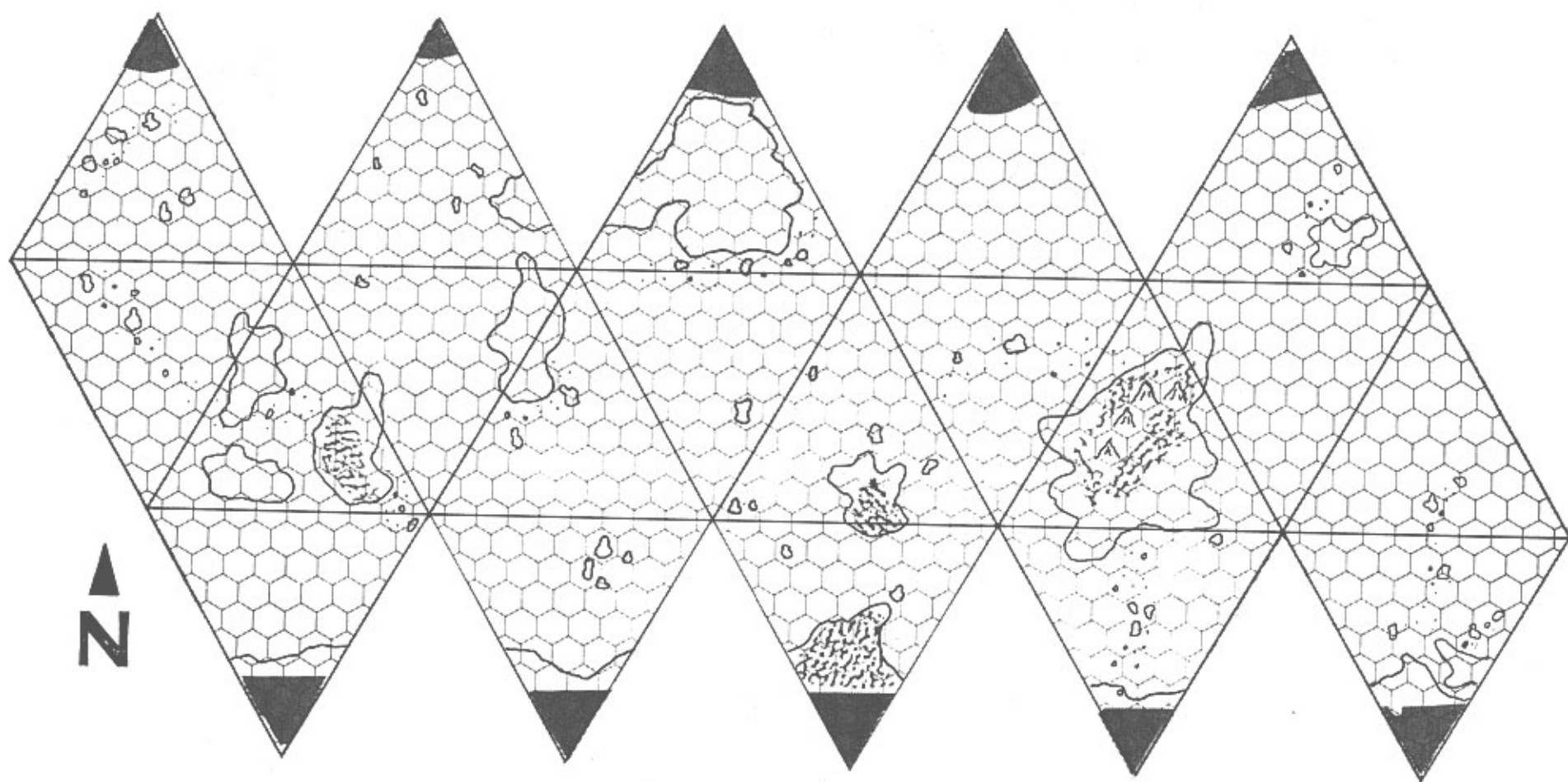


SECTOR \_\_\_\_\_

DATE \_\_\_\_\_

11-22-44 11-22-44 11-22-44 11-22-44

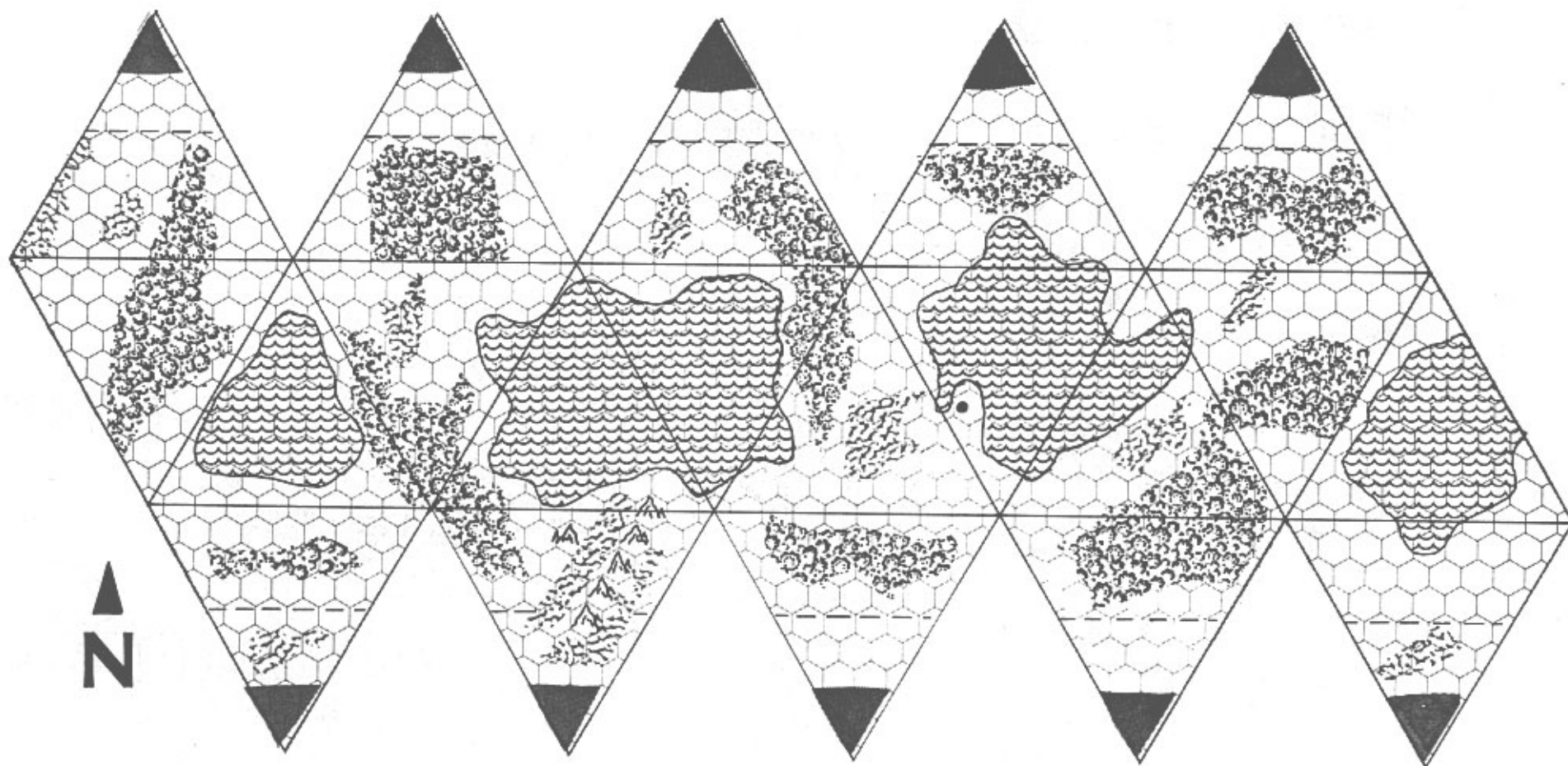




## TARNKEEP 2438 E537215 7

Third planet out in a system of nine, Tarnkeep is noted for its marine life. The continents are all fairly small, and native land life is not well developed. A small research installation is maintained by the Tm' Ramis Corporation, and small groups of colonists are beginning to settle. The major drawback to colonization has been the thin atmosphere.

The **Simba Safari** calls primarily to hunt the giant sea mammals which abound here.



**VILARUBY 2338 X343100**

The fourth planet out in a system of seven, Vilaruby is noted for its forests. Most of the available land area is covered with a cool forest. Not a jungle or rainforest, this special ecosystem has a very large number of furred, aboreal predators. While most of the creatures are of moderate to small size, the fur is of exquisite quality. Much of the planet is unmapped, and no other valuable resources are known.

## KEY



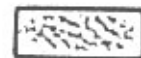
MOUNTAINS



CITY



FOREST



ROUGH



ICECAP



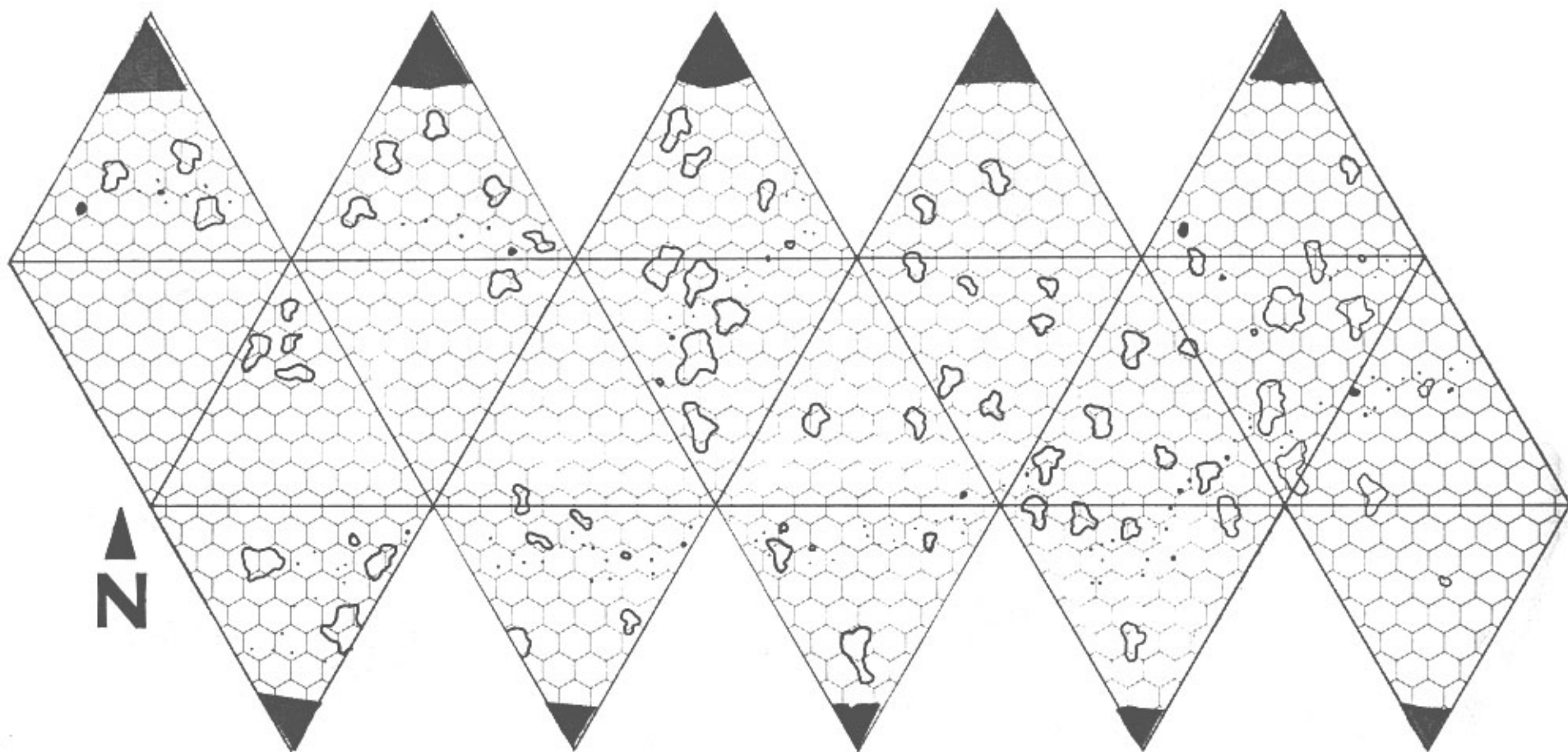
STARPORT



DESERT



RUINS

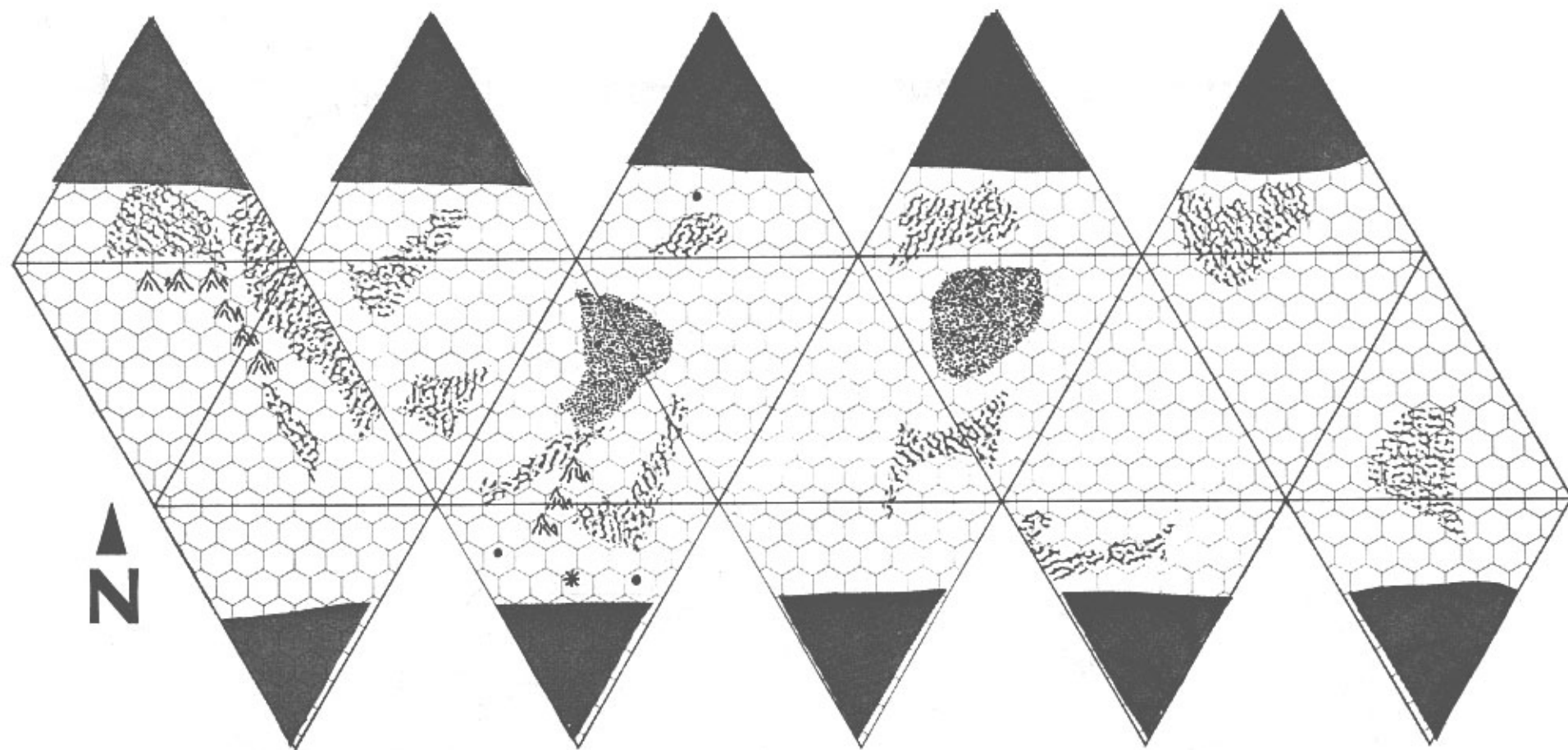


## ATOLEY 2336 DA98413 7

The third planet out in a system of ten, Atoley is in the process of being colonized. The tainted atmosphere classification is caused by a series of organic trace compounds that cause a long-term allergenic reaction in about 50% of the Humaniti that are exposed to them. The land surface is only 20% of the planet and is scattered in a large number of moderate-sized islands. Marine life is extensive, and land life is composed primarily of insect-like and bird-like animals. Most of the land animals are also flyers, reaching quite large sizes, permitted here by the atmospheric conditions. Some research has been done on the atmospheric contaminants, and a solution to the allergenic reaction seems probable. The population has been building up slowly since the Atoley Colony Corporation was established 200 years ago.

The Simba Safari comes here for both the aerial and marine creatures. Hamlar and his crew have made detailed surveys of a number of archipelagos in return for exclusive hunting rights in them for a 10-year period. Many island groups still remain completely unexplored.

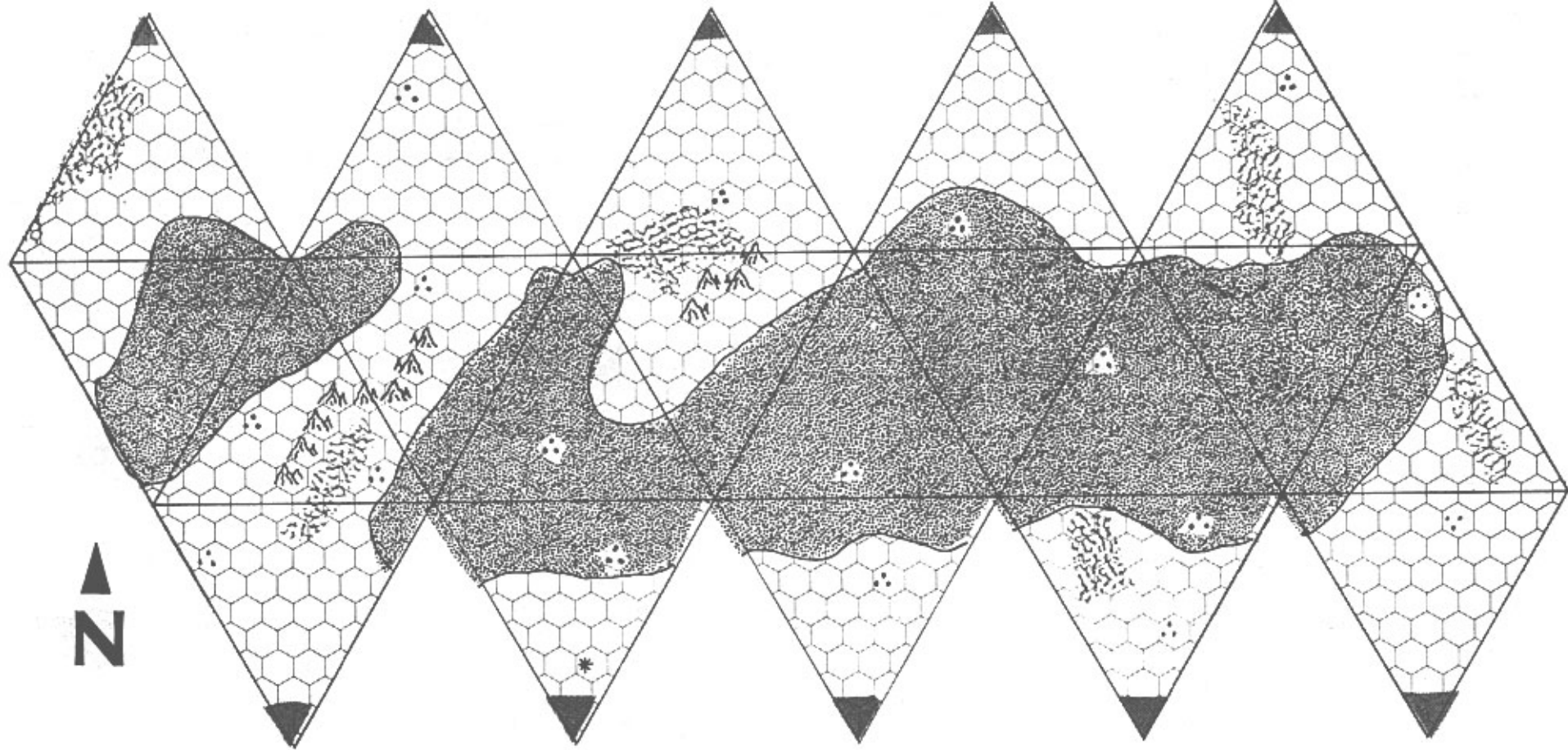




## DEADFALL 2436 E223423 8

Fourth planet out in a system of five, all the other planets are airless rocks. This planet is in an ice age, and all of what water there is is locked up in ice caps. Some unusual species of native life exist in the form of burrowers and tunnelers. Some of these creatures are quite large and make most unusual trophies. The inhabitants make a living by mining and by hunting.

The Simba Safari has made arrangements with local hunters to get the best specimens spotted ahead of time. Some gemstones and jewelry are also produced here and are quite popular Sector-wide.



## SEKMETAR 2235 E430100

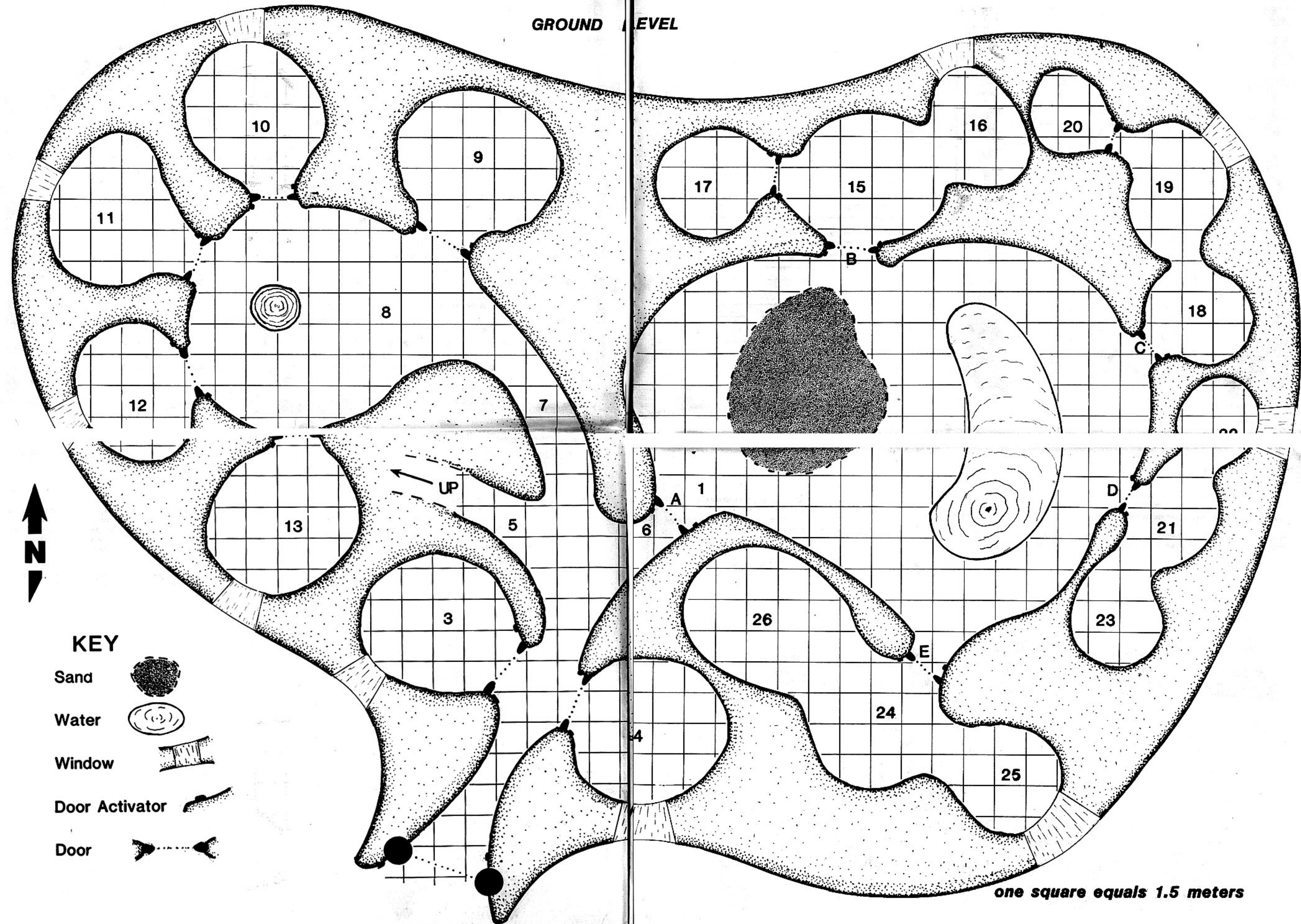
Second planet in a system of six, Sekmetar has proven notable only for its wildlife. Some of the largest crypto-arthropod predators known are found roaming its equatorial deserts. Large ruins of an indigenous race have been discovered. From what little work has been done in this area, it appears that the race reached Tech Level 6 or 7 before disappearing.

This planet is a popular stop in Simba Safari's itinerary. Hunters seek the giant Scorpoids, and others find the ancient ruins interesting.

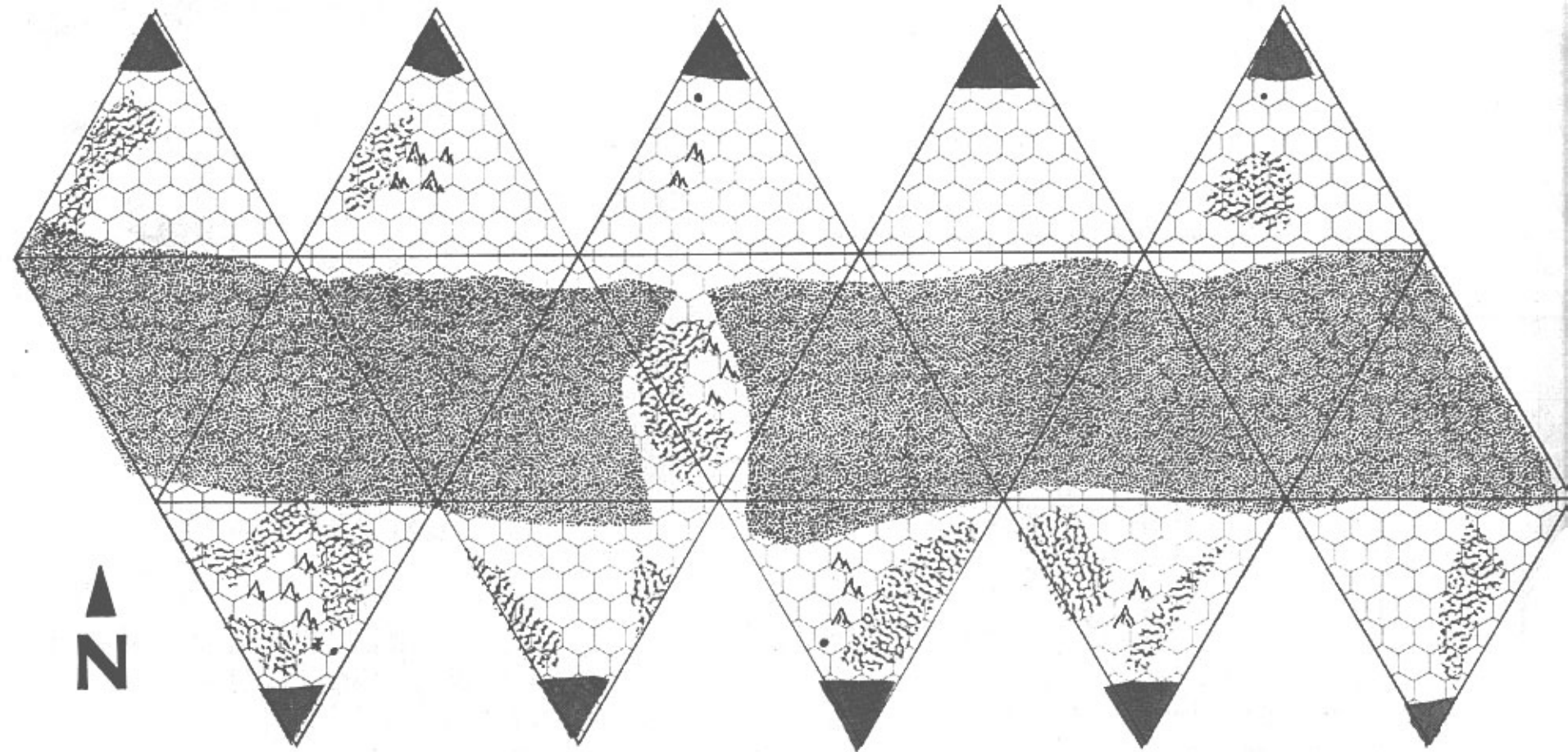


# ALIEN INSTALLATION

GROUND LEVEL







## BASTIS 2036 E510553 7

The third planet out in a system of eight, Bastis is the only one with any significant population. Settled by religious dissidents some 5 centuries ago, this 8,590 kilometer diameter planet is mostly dead sand. The population lives in domed, oasis cities near the poles. The major form of animal life is the Sandworm, a large, legless, semi-reptilian herbivore. While some forms of Sandworm do secrete valuable drugs, the target of most hunters is the Slink, a very large carnivore.

Also of interest is the Elven Forest on the third moon of the gas giant (seventh planet). A 47-kilometer long bottom of a chasm which is covered by a large number of spires of water and ammonia ice, this feature is thought to be natural.

The *Simba Safari* usually Jumps into the system on the outbound journey and refuels from the spaceport as the Hunting Party goes after Sandworms or Slink. On the return journey, the Hunting Party is conducted on a tour of the Elven Forest while the ship skims the gas giant for fuel.