

Biography of Anton Krell

A. Origin:

1. Born Anton Krell in Warsaw Poland, Aug 28, 1950. Only Child of Mishka and Grisella Krell.
2. Escaped with family to the west in 1955.

B. Early Life/Education:

1. Immigrated to the U.S. and moved to Berkeley, California in 1960, attended public school. Honor student in grammar school, Validictorian of his high school.
2. Attended Berkeley University on a Fullbright scholarship, mastering in Economics, minor in Chemistry. Graduated in 1976, with a MA in Economics and a BA in Chemistry.

C. Work/Professional Resume:

1. Worked for DOW Chemical from 1977-1979 in weapons research division.
2. Started his own Business in 1979, soon became known as the most unscrupulous arms dealer in the world.
3. Indicted on income tax evasion in 1981, all charges dropped after intensive investigation.
4. Became exclusive supplier for Morrow Project armaments from 1980-1987. Contract dropped after project personnel became aware of repeated attempts by Krell to purchase advanced project technology.

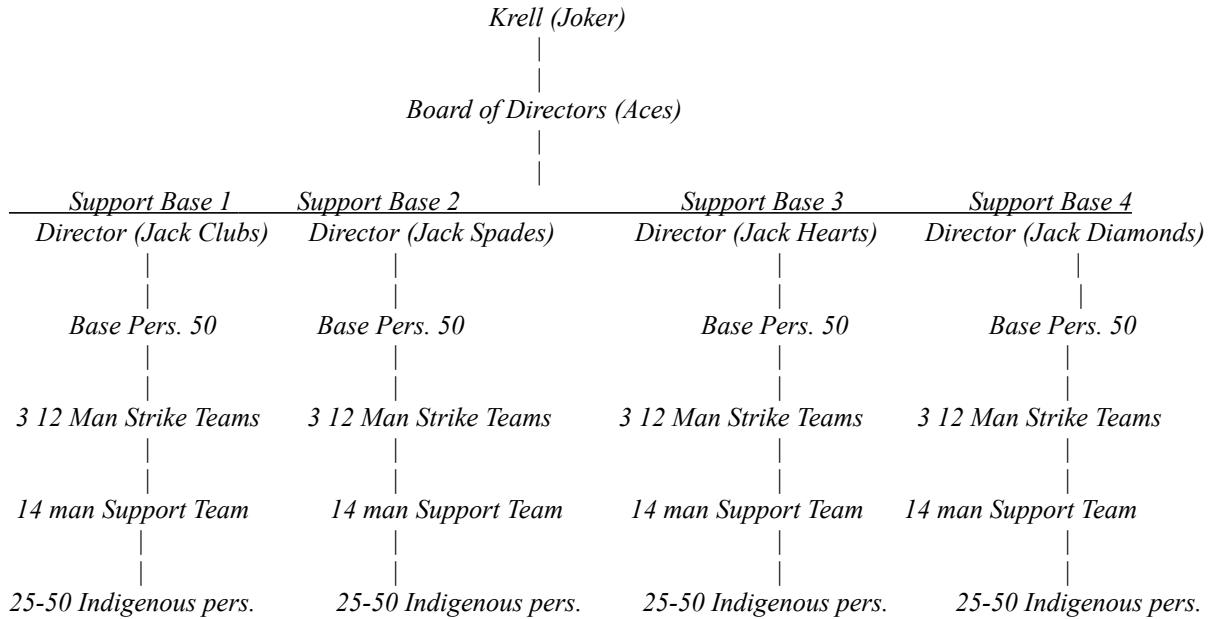
D. Morrow Project Connections:

1. *Learned of Morrow Project charter and mission from private detectives in April of 1982.*
2. *Stole Project technology (freeze tubes, weapons, fusion power etc) from 1982-1987.*
3. *Laid in stockpiles of arms and equipment, recruited and froze his own teams from Jan. 1985-Oct. 1989.*
4. *Survived three separate assassination attempts by Project MARS teams from 1987 - 1989.*

E. Goals/Objectives:

1. *Defeat Morrow Project.*
 - a. *Capture MP equipment and Tech. Manuals.*
2. *Establish Control over CONUS.*
3. *Extend Control over the rest of the world.*

F. Force Structure:



G. Weapons:

1. Strike teams will Normally be equipped as follows: Resistweave Coveralls, Helmets, Boots, Gloves, 2 weeks Standard rations, AN-PRC 68's, KCB-70's, M1 CBR kits, AN-PRC 70 or vehicle radio.

Sqd Ldr (1)	Sqd Ldr (1)	Squad (4)	Squad (4)	LMG Support (2)
M-21 12 mags	M-21 12 Mags	M-16 12 Mags	Mac 10 12 Mags	M207 6 Belts
.44 Auto 4 mags	11mm Wildey 5 mags	HP-35/silenced 3 mags	.44 Anaconda 4 spd ldrs	HK69A1
4 - M26A1	4 - M26A1	4 - M26A1	4 - M26A1	4- M381 HE
4 - MK-1	4 - MK-1	4 - MK-1	4 - MK-1	4-M433 HEDP
4 - AN-M8	4 - AN-M8	4 - AN-M8	4 - AN-M8	4- M651 CS
4 - M6 CN-DM	4 - M6 CN-DM	4 - M6 CN-DM	4 - M6 CN-DM	4-40mm Stun

Indigenous Augmentees normally carry:

Marlin 1894c .44 Mag/50 rnds
 S&W M-29 .44 Magnum
 KCB-70
 2 Weeks standard rations
 2 - M26A1

Other Morrow Project equipment/weapons at the GM's discretion.

H. Transport

1. Can be found in any sort of vehicle, project or otherwise. *Most project vehicles are used to assist in Close range support / defense of main support bases. Exceptions: Krell does not have any of the MARS or Science One vehicles. They do possess limited air assets, Airscouts, Jelbelts, etc.*

Text in ***Italics*** is for GM use only. All other info is either known or can be found out by the players.