

GENERAL PLANS U.S.S. INDEPENDENCE CLASS

FIRST EDITION

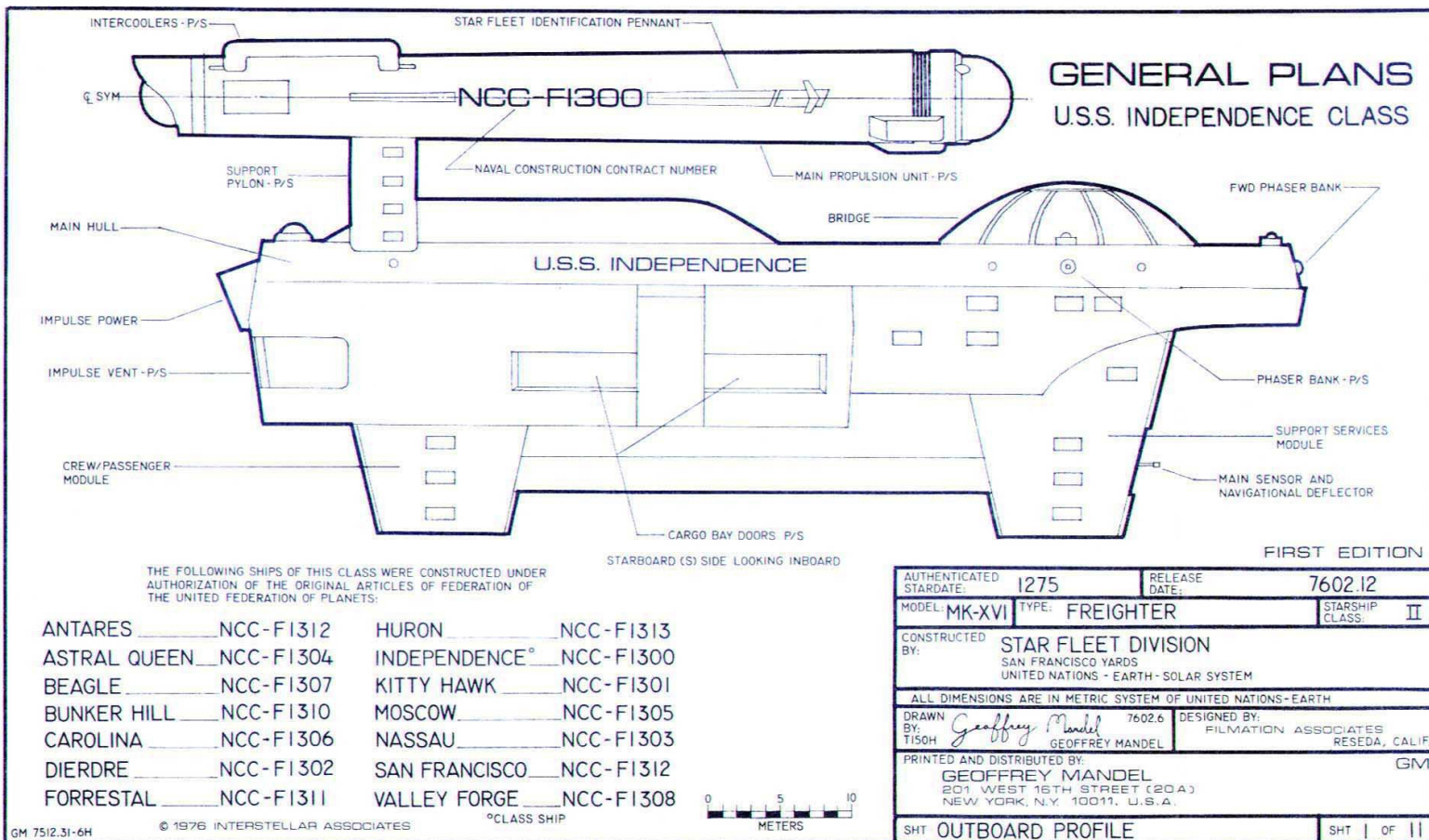
THE FOLLOWING SHIPS OF THIS CLASS WERE CONSTRUCTED UNDER AUTHORIZATION OF THE ORIGINAL ARTICLES OF FEDERATION OF THE UNITED FEDERATION OF PLANETS:

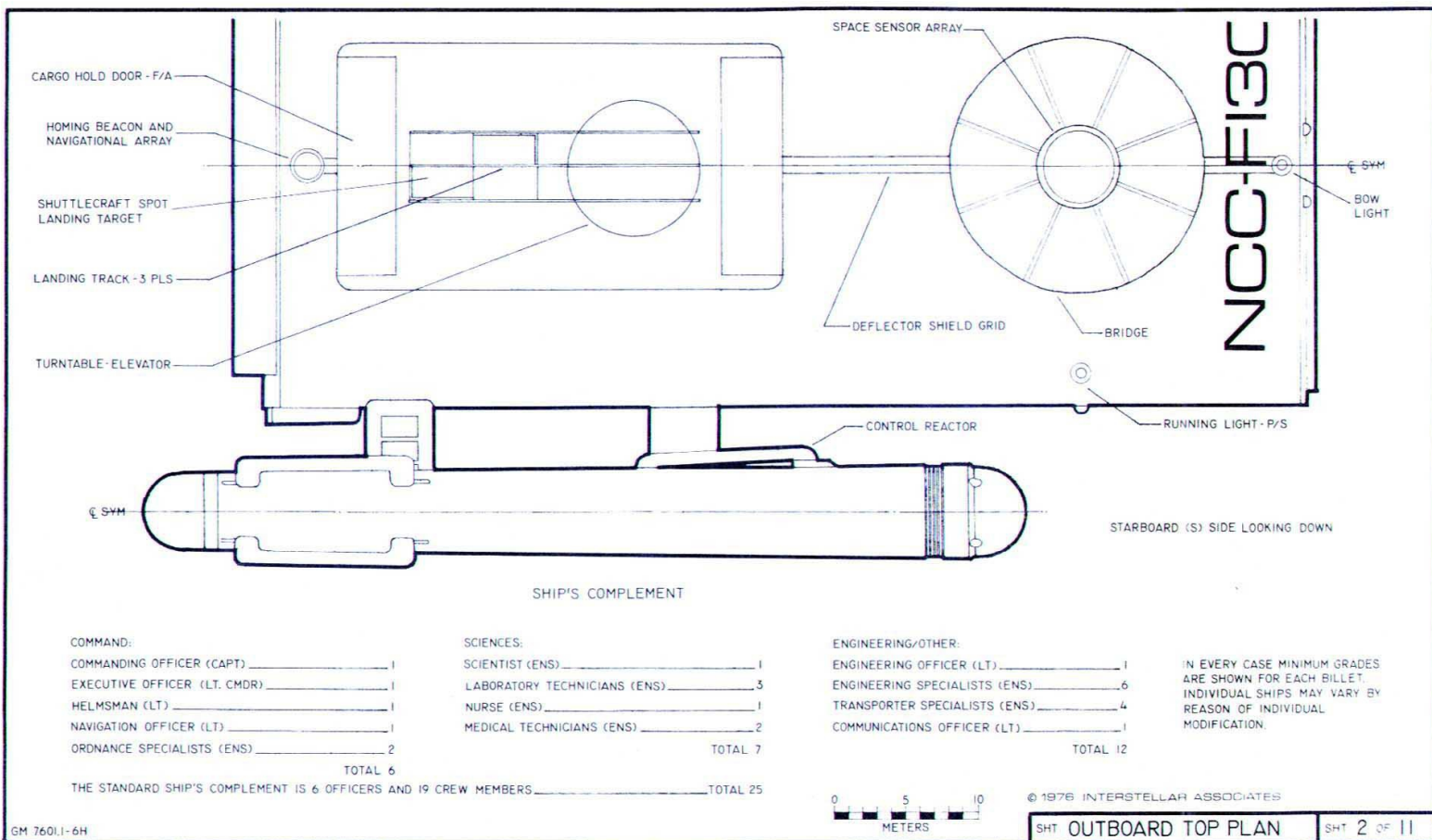
| | |
|------------------------------|-------------------------------|
| ANTARES _____ NCC-F1312 | HURON _____ NCC-F1313 |
| ASTRAL QUEEN _____ NCC-F1304 | INDEPENDENCE* _____ NCC-F1300 |
| BEAGLE _____ NCC-F1307 | KITTY HAWK _____ NCC-F1301 |
| BUNKER HILL _____ NCC-F1310 | MOSCOW _____ NCC-F1305 |
| CAROLINA _____ NCC-F1306 | NASSAU _____ NCC-F1303 |
| DIERDRE _____ NCC-F1302 | SAN FRANCISCO _____ NCC-F1312 |
| FORRESTAL _____ NCC-F1311 | VALLEY FORGE _____ NCC-F1308 |

STARBOARD (S) SIDE, LOOKING FORWARD



| | | | |
|--|-----------------|---|-------------|
| AUTHENTICATED DATE: 1275 | | RELEASE DATE: 760212 | |
| MODEL: MK-XVI | TYPE: FREIGHTER | STARSHIP CLASS: II | |
| CONSTRUCTED BY: STAR FLEET DIVISION SAN FRANCISCO YARDS UNITED NATIONS - EARTH - SOLAR SYSTEM | | | |
| ALL DIMENSIONS ARE IN METRIC SYSTEM OF UNITED NATIONS-EARTH | | | |
| DRAWN BY: Geoffrey Mandel T100H | | DESIGNED BY: FILMATION ASSOCIATES REVERA, CALIF. | |
| PRINTED AND DISTRIBUTED BY: GEOFFREY MANDEL 501 WEST 10TH STREET 100A3 NEW YORK, N.Y. 10011, U.S.A. | | GM | |
| SHT OUTBOARD PROFILE | | | SHT 1 OF 11 |





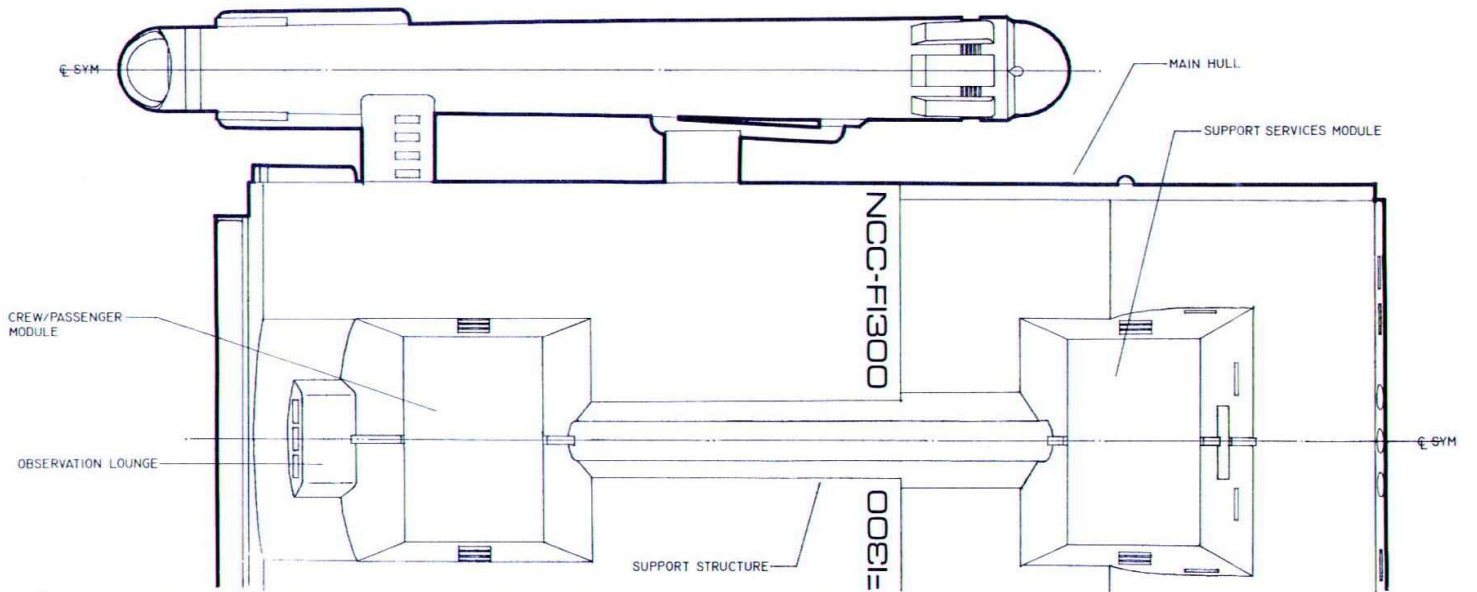
STARBOARD (S) SIDE LOOKING UP

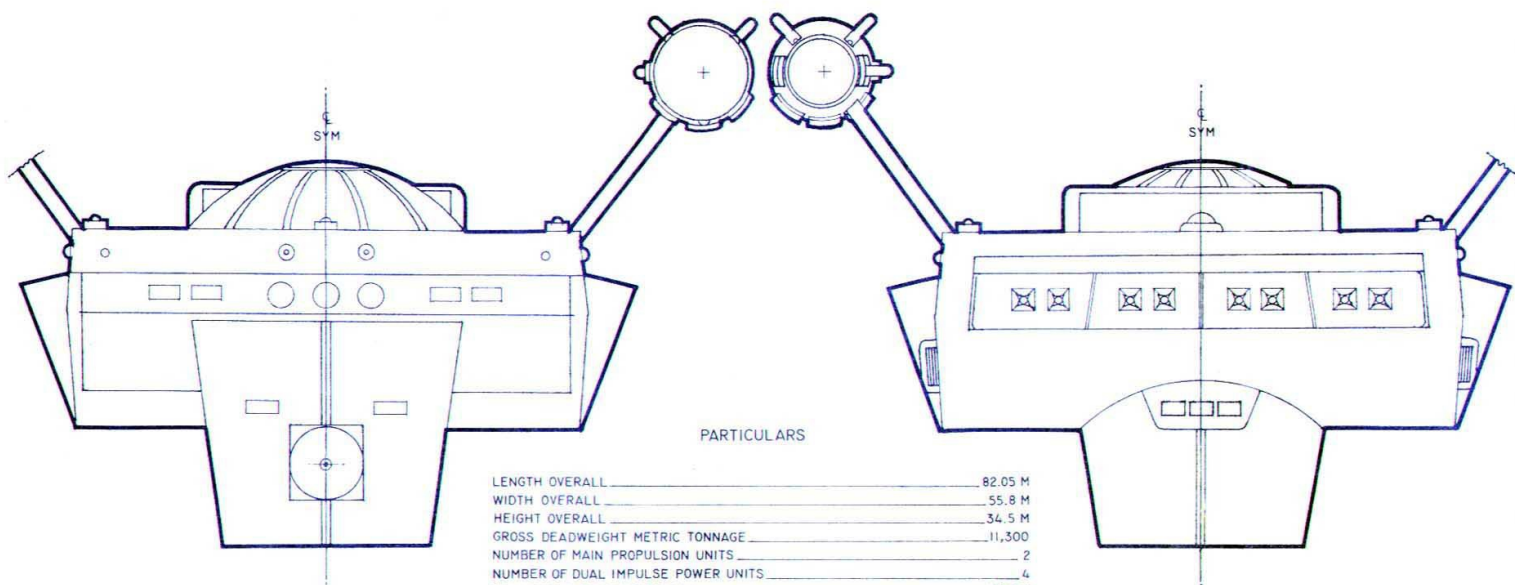


SHT OUTBOARD BOTTOM PLAN

SHT 3 OF 11

© 1976 INTERSTELLAR ASSOCIATES

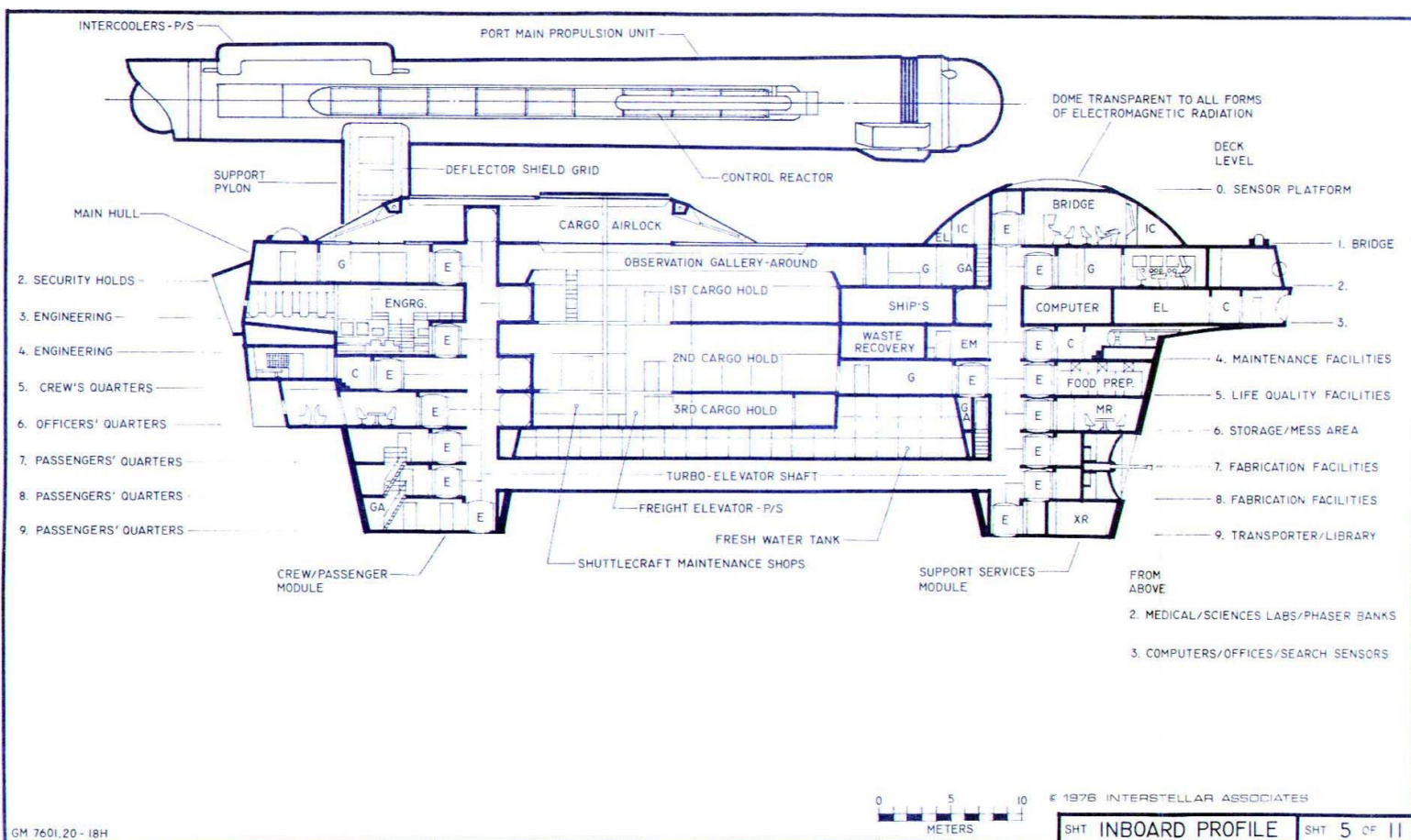


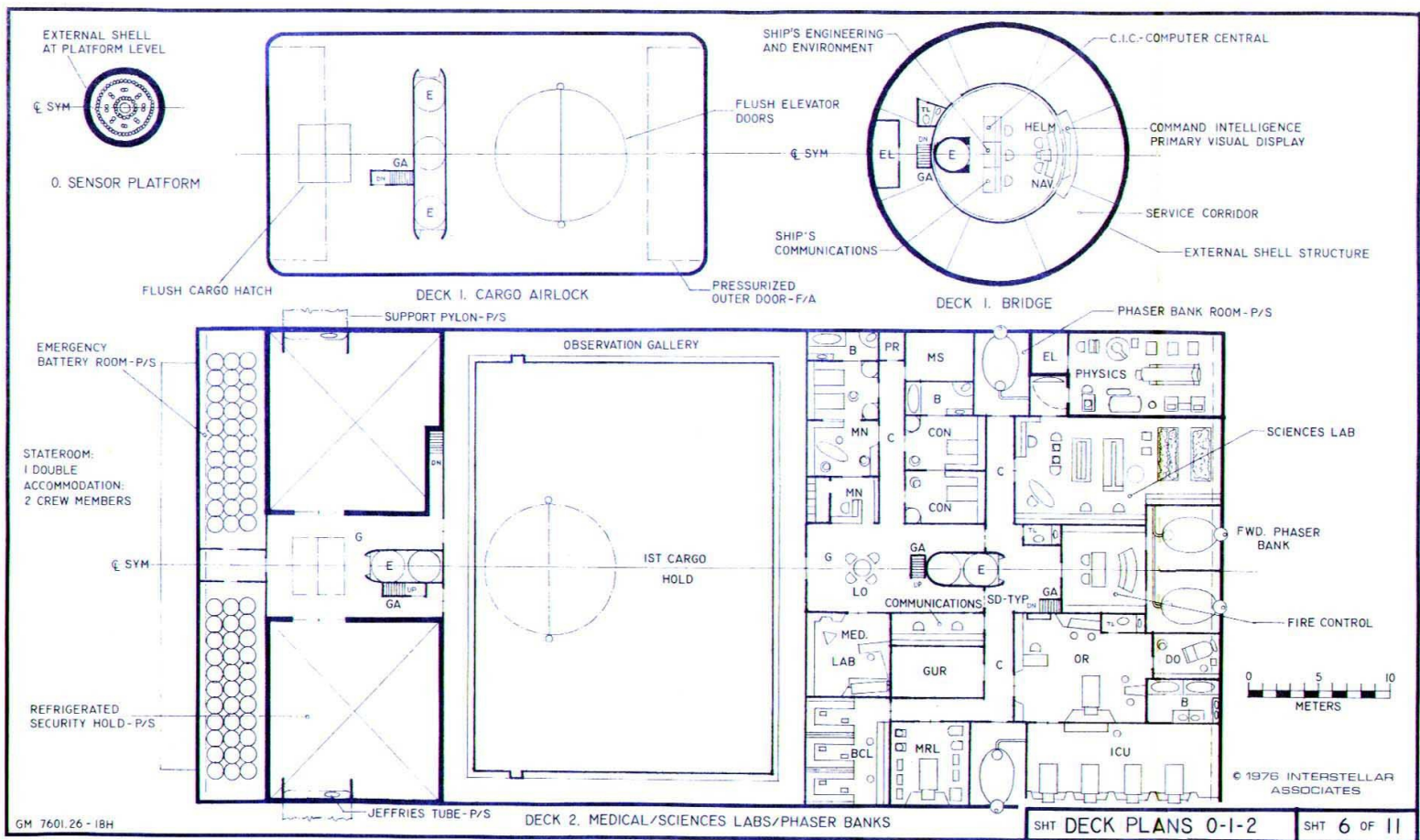


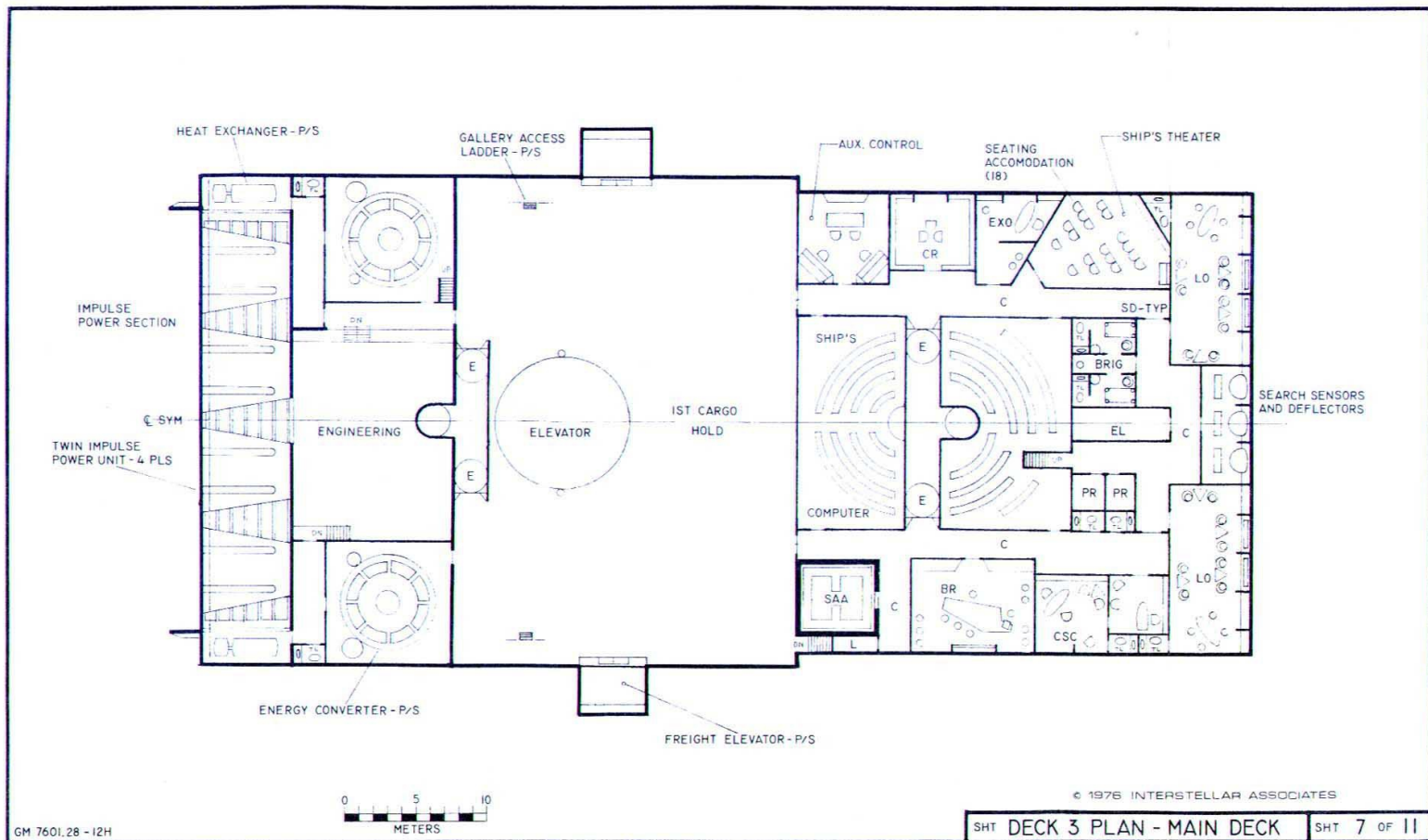
PARTICULARS

| | |
|--|---------|
| LENGTH OVERALL | 82.05 M |
| WIDTH OVERALL | 55.8 M |
| HEIGHT OVERALL | 34.5 M |
| GROSS DEADWEIGHT METRIC TONNAGE | 11,300 |
| NUMBER OF MAIN PROPULSION UNITS | 2 |
| NUMBER OF DUAL IMPULSE POWER UNITS | 4 |
| MAIN HULL LENGTH OVERALL | 75.9 M |
| MAIN HULL WIDTH OVERALL | 39.6 M |
| MAIN HULL HEIGHT OVERALL | 25 M |
| STANDARD CEILING HEIGHT OVER DECK | 2.44 M |
| MAIN PROPULSION UNITS DISTANCE BETWEEN C'S | 48.9 M |
| MAIN PROPULSION UNIT LENGTH OVERALL | 73.5 M |
| MAIN PROPULSION UNIT MAXIMUM DIAMETER | 6.63 M |
| NUMBER OF 6 PERSON STANDARD TRANSPORTERS | 1 |
| NUMBER OF CARGO TRANSPORTERS | 2 |
| ENDURANCE IN YEARS AT LIGHT-YEAR VELOCITY | 6 |

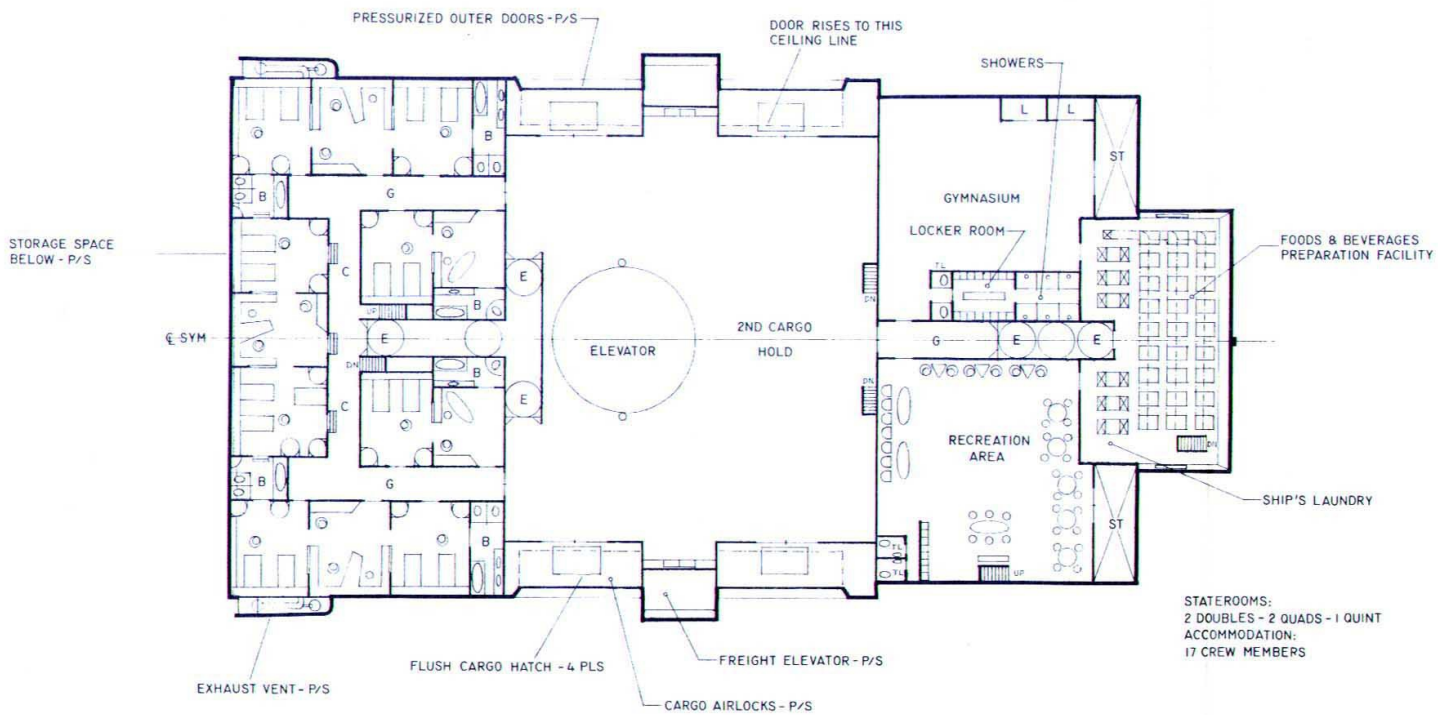










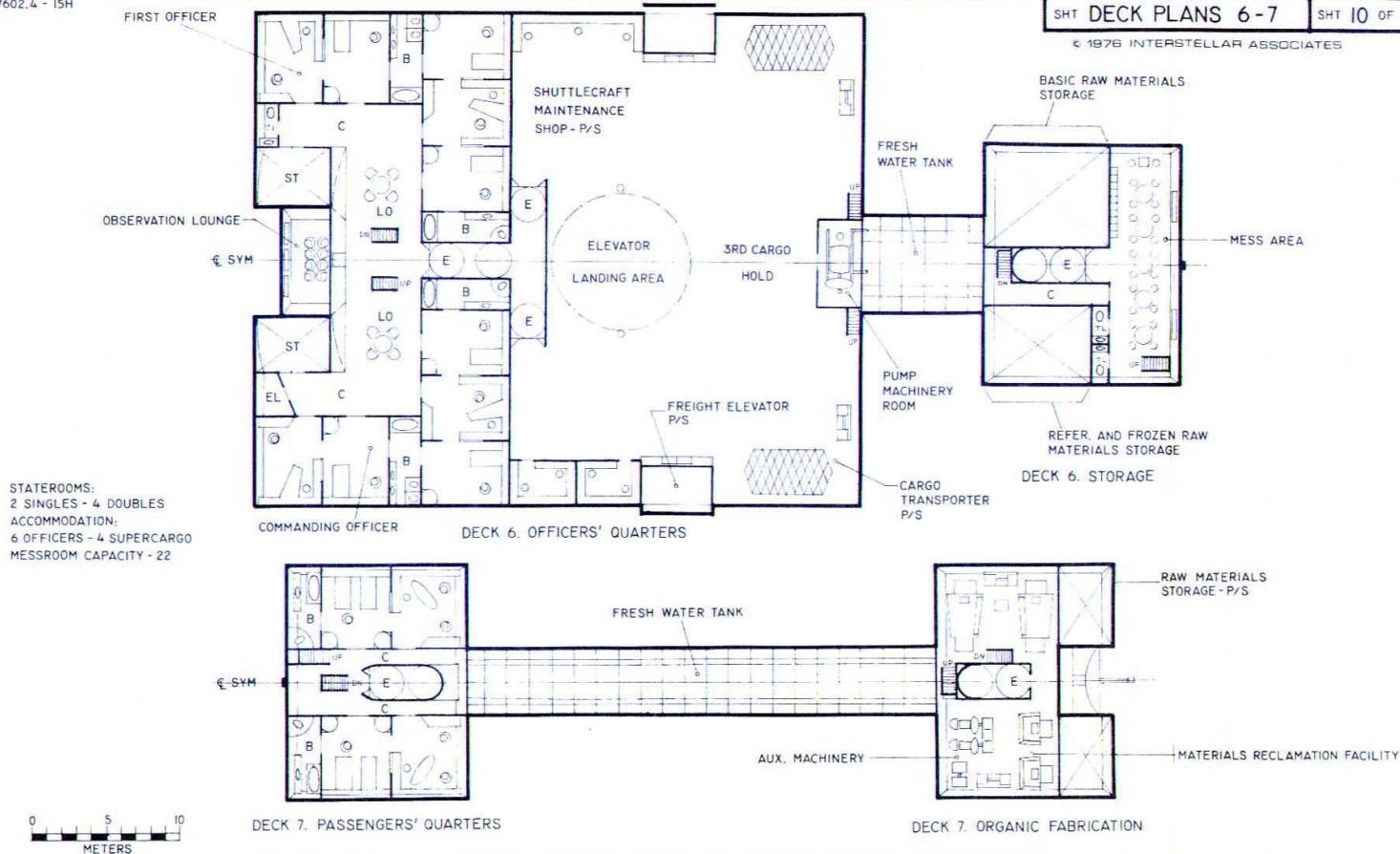


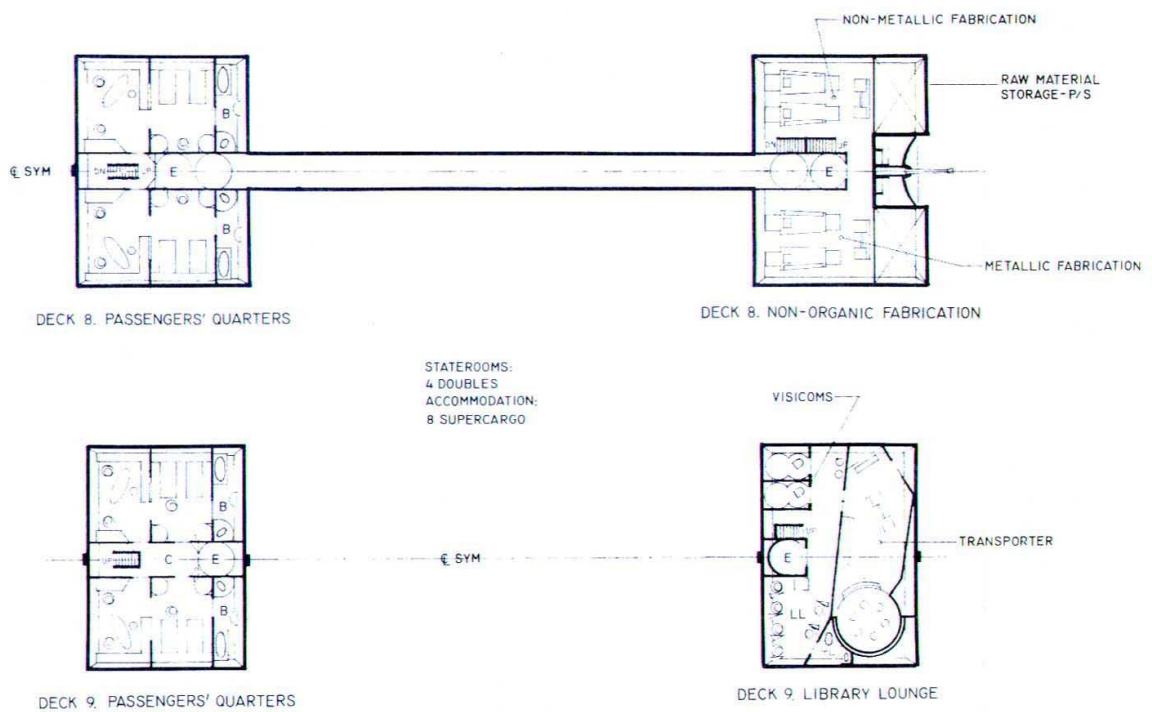
© 1976 INTERSTELLAR ASSOCIATES

GM 7602.4 - 15H

SHT DECK PLANS 6-7 SHT 10 OF 11

© 1976 INTERSTELLAR ASSOCIATES





U.S.S. INDEPENDENCE GENERAL PLANS SUPPLEMENT - STARDATE 7602.10

STANDARD ABBREVIATIONS

| | |
|------|-----------------------------|
| A | AFT |
| AUX | AUXILIARY |
| B | BATHROOM |
| BCL | BIO-CHEMICAL LAB |
| BR | BRIEFING ROOM |
| C | CORRIDOR |
| CIC | COMMAND INTELLIGENCE CENTER |
| CL | CENTERLINE |
| CON | CONVALESCENT WARD |
| COND | CONDITIONING |
| CR | CHART ROOM |
| CSC | COMMANDING OFFICER'S OFFICE |
| DN | DOWN |
| DO | DENTAL OFFICE |
| E | TURBO-ELEVATOR CAR |
| EL | LIFE-SUPPORT BELT LOCKER |
| EM | ELEVATOR MAINTENANCE SHOP |
| ENG | (ENGRG) ENGINEERING |
| EXO | EXECUTIVE OFFICER'S OFFICE |
| F/A | FORE AND AFT |
| FWD | FORWARD |
| G | GALLERY |
| GA | GANGWAY (COMPANIONWAY) |
| GUR | GENERAL UTILITY ROOM |
| ICU | INTENSIVE CARE UNIT |
| L | LOCKER |
| LAB | LABORATORY |
| LL | LIBRARY LOUNGE |
| LO | LOUNGE |
| M | METER(S) |
| MN | DUTY NURSE |
| MRL | MEDICAL RESEARCH LAB |
| MS | MEDICAL SUPPLIES |
| OR | EXAMINATION/OPERATING ROOM |
| P | PORT (LEFT) |
| PLS | PLACES |
| PR | PERSONAL ISOLATION ROOM |
| P/S | PORT AND STARBOARD |
| S | STARBOARD (RIGHT) |
| SAA | SMALL ARMS ARSENAL |
| SD | SECTION ISOLATION DOOR |
| ST | STOREROOM/STOWAGE |
| SYM | SYMMETRY |
| TL | TOILET |
| TYP | TYPICAL |
| UP | UP |

FEDERATION CLASSIFIED

THESE GENERAL PLANS ARE FOR THE SPECIFIC USE OF ACADEMY CADETS TO FAMILIARIZE THEMSELVES WITH THE GENERAL ARRANGEMENT OF STARSHIPS. UNDER THE LAWS OF THE UNITED FEDERATION OF PLANETS, AND ITS MEMBER PLANETS, UNAUTHORIZED USE, OR REPRODUCTION IN WHOLE OR IN PART, WITHOUT THE WRITTEN PERMISSION OF STAR FLEET OR ITS PLANETARY AGENTS IS PROHIBITED.

PLAN SYMBOLS

| | |
|--|-------------------------------------|
| | TYPICAL CHAIRS |
| | SINGLE POCKET DOOR |
| | DOUBLE POCKET DOOR |
| | DESK OR TABLE |
| | GANGWAY |
| | CONTROL CONSOLE |
| | FOOD AND BEVERAGE SERVICE |
| | DINETTE TABLE AND CHAIRS |
| | TYPICAL TABLES |
| | FABRICATION MACHINE |
| | MEDICAL EXAMINATION/OPERATING TABLE |
| | VISICOM |
| | LAUNDRY UNIT |
| | LIBRARY COMPUTER READER |

STATEROOM:

