
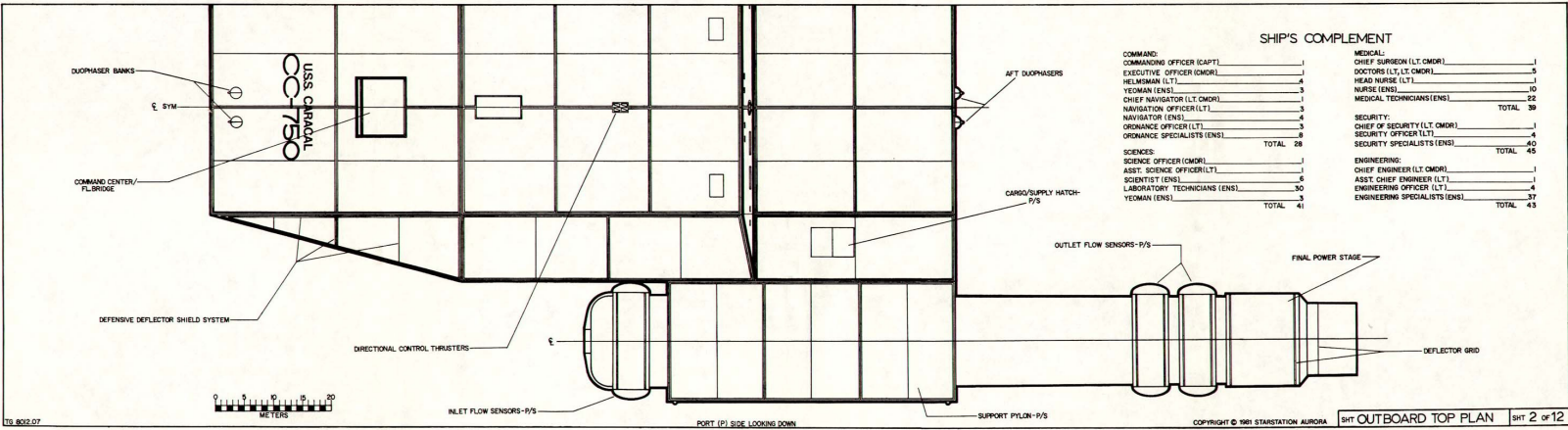
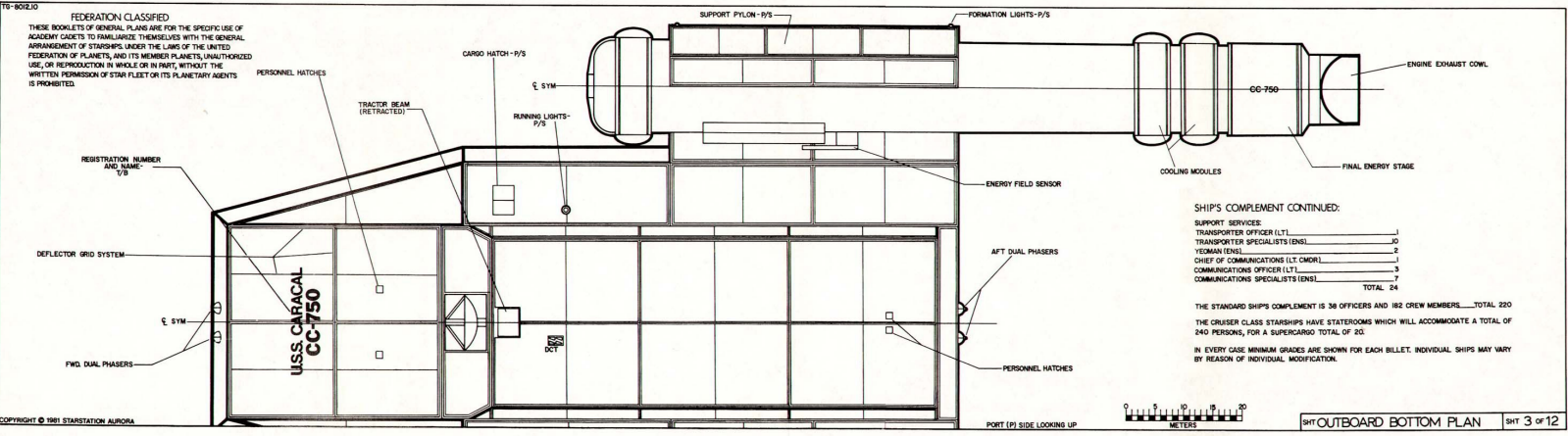


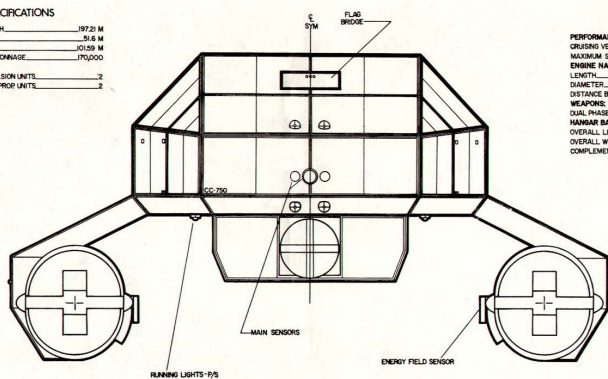
ANTI-ENCRYPTED STARGATE:	2455.3	RELEASE STARGATE:	8102.5	8103.01
APPROVED STARGATE:	2450	RELEASE STARGATE:	7305.30	7405
MODEL:	MK-V	TYPE	CRUISER (CC)	STARSHIP CLASS: I
CONSTRUCTED BY:	COSMADYNE CORPORATION BOSTON CONSTRUCTION COMPLEX UNITED NATIONS - EARTH-SOIL SYSTEM			
ALL DIMENSIONS ARE IN METRIC SYSTEM	EARTH APPROVED BY:  TODD GUENTHER			
DRAWN BY:	MILITARY STAFF COMMITTEE			
DISTRIBUTED BY:	STARSTATION AURORA 55 BOX 343 - R 250 PC 55 BOX 750 HOLYOKE, MASS. 01041 USA			
DESIGNATION:	CC - COMMAND CRUISER			OPERATIONAL LEADTHROTS:
CA - HEAVY CRUISER				
CR - LIGHT CRUISER				
CS - STRIKE CRUISER				
				2190-2232





SPECIFICATIONS

OVERALL LENGTH.....197.21 M
OVERALL DRAFT.....51.6 M
OVERALL BEAM.....101.59 M
GROSS METRIC TONNAGE.....170,000
DRIVE.....
NO-MAIN PROPULSION UNITS.....2
NO-SECONDARY PROP UNITS.....2



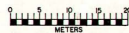
BOW

SPECIFICATIONS

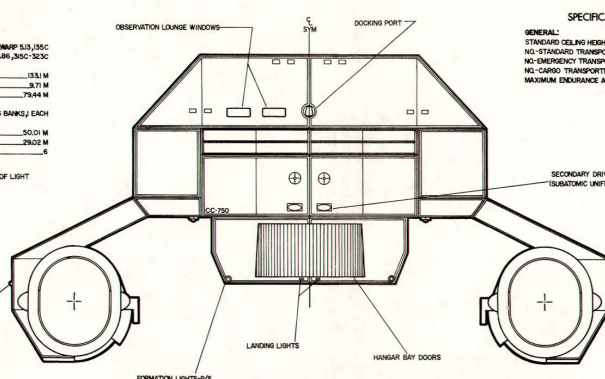
PERFORMANCE:
CRUISING VELOCITY.....WARP 5.0/155C
MAXIMUM SAFE VELOCITY.....WARP 6.8-6.8W, 355C-353C
ENGINE NADELLES.....
LENGTH.....133.1 M
DIAMETER.....3.71 M
DISTANCE BETWEEN E'S.....73.44 M
WEAPONS:
DUAL PHASER WEAPON SYSTEM.....8 BANKS/J EACH
HANGAR BAY.....
OVERALL LENGTH.....50.01 M
OVERALL WIDTH.....29.02 M
COMPLEMENT OF STANDARD SHUTTLES (7 MAN).....4

C-SPEED OF LIGHT

FORMATION LIGHTS



OBSERVATION LOUNGE WINDOWS

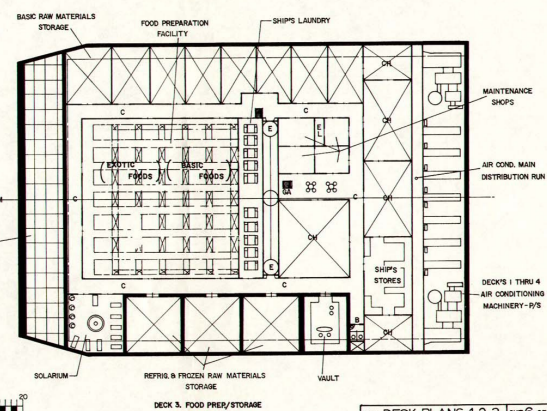
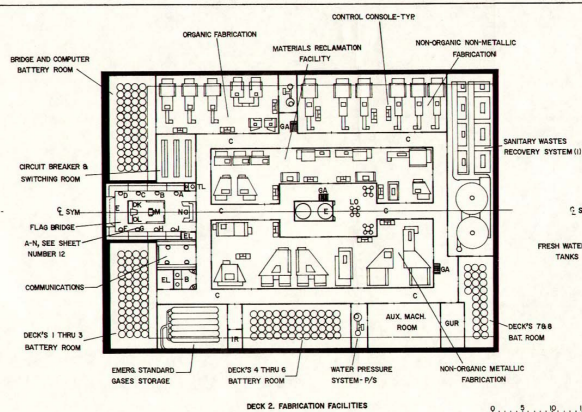
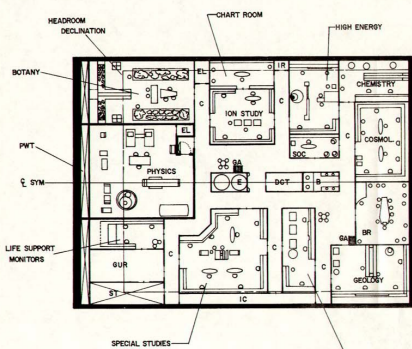


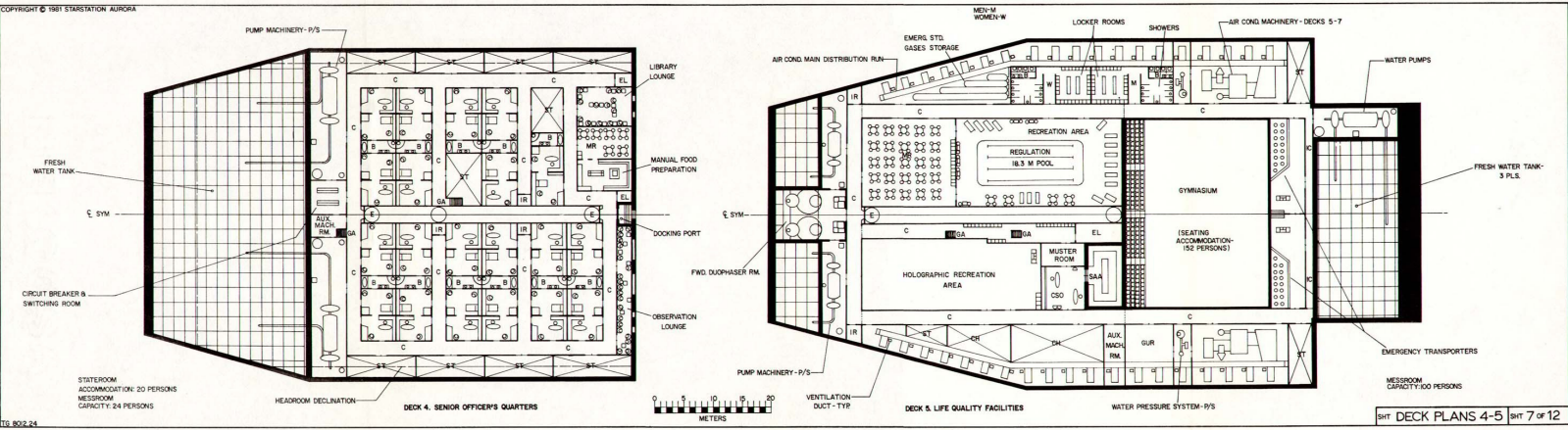
STERN

FORMATION LIGHTS-9/S

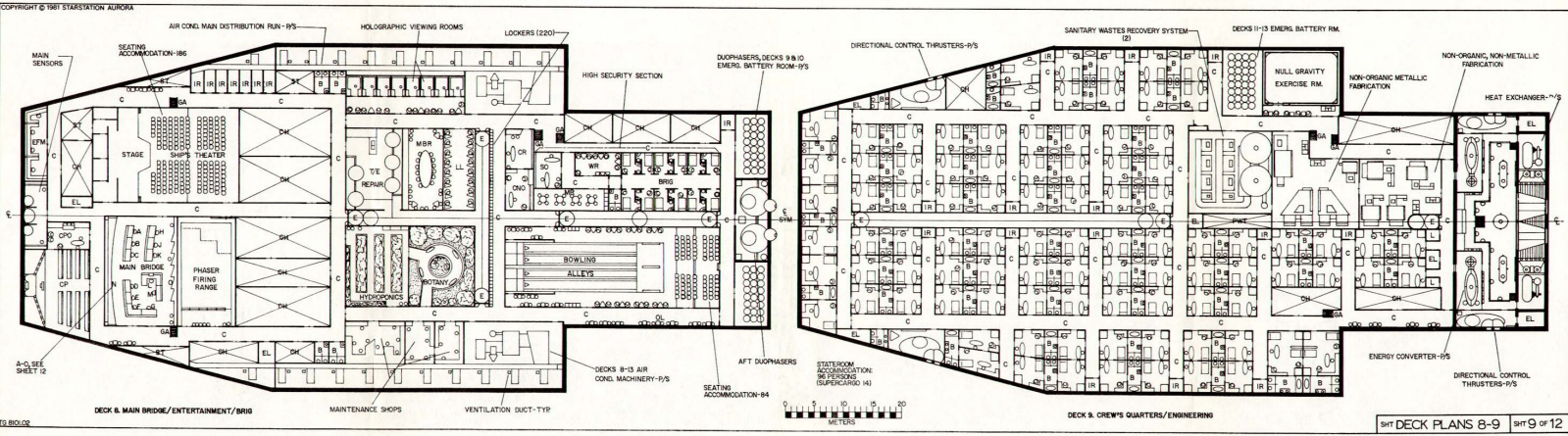
SPECIFICATIONS

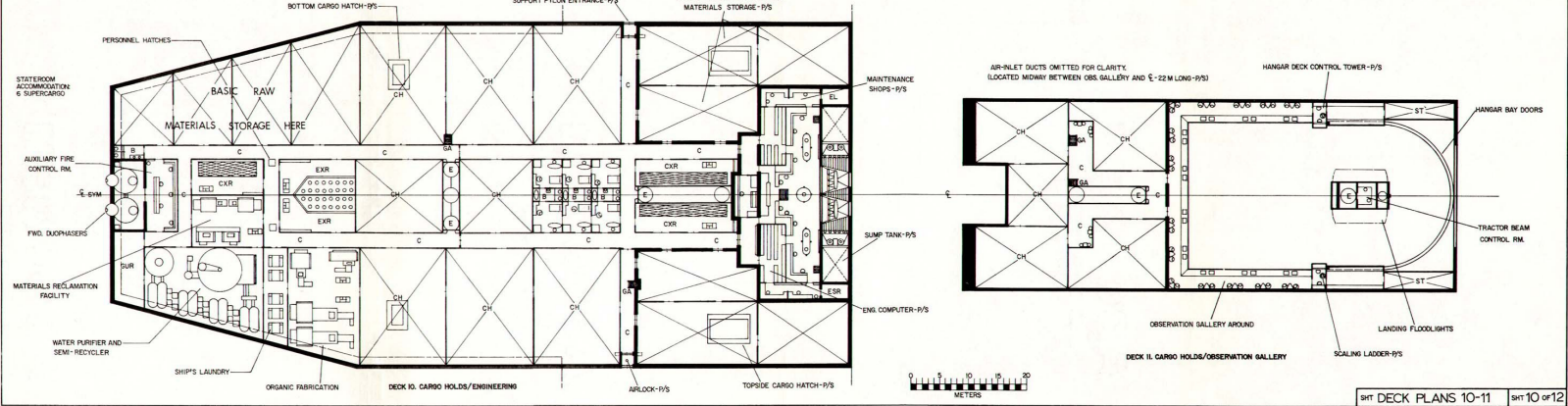
GENERAL:
STANDARD CEILING HEIGHT OVER DECK.....244 M
NO-STANDARD TRANSPORTERS/PERSON.....4
NO-EMERGENCY TRANSPORTERS/PERSON.....4
NO-CARGO TRANSPORTERS.....3
MAXIMUM ENDURANCE AT C.....14 YEARS

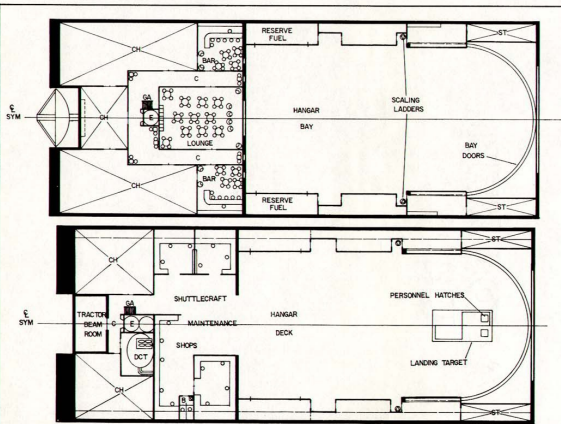












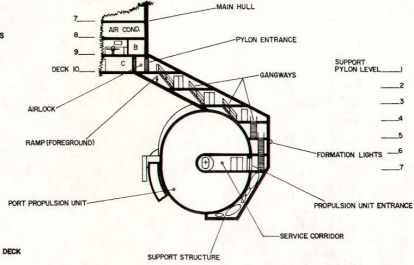
DECK 12. CARBO HOLDS/LOUNGE

DECK 13. MAINTENANCE/HANGAR DECK



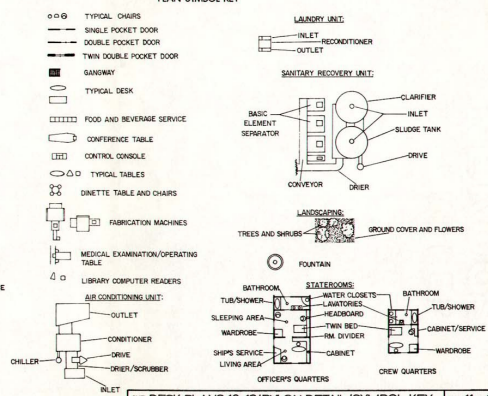
SUPPORT PYLON/PORT ENGINE CROSS SECTION

WARNING
ENTRY INTO THE SUPPORT PYLON IS PERMISSIBLE ONLY
WITH FULL ANTI-RADIATION GEAR AND MAIN PROPULSION UNIT
SHUTDOWN. CAPTAIN'S PERMISSION REQUIRED FOR ENTRY INTO
PROP. UNIT.



VIEW THROUGH SUPPORT PYLON/MAIN ENGINE
AT PYLON ENTRANCE (DECK 10) - VIEW AFT

PLAN SYMBOL KEY



GENERAL RECORD:

STAR FLEET

Caracal

CRUISER CLASS

CARACAL CLASS IS SHIPS
CARACAL (CC-750) IPSAH-DAM (CC-764)

AUTHORIZATION:
CC-750 THRU CC-754 AUTHORIZED 2887*
CC-759 THRU CC-764 AUTHORIZED 2888.

ALL VESSELS CONSTRUCTED AT THE BOSTON NAVAL SHIPYARD AND IN EARTH ORBIT BY THE COSMADINE CORPORATION.

ALL VARIANTS OF THIS CLASS(COMMAND,STRIKE, LIGHT, AND HEAVY CRUISERS) POSSESS BASICALLY THE SAME EXTERIOR CONFIGURATION FOR FURTHER DETAILS ON THE OTHER SPECIFIC TYPES,CONSULT THE RESPECTIVE BOOKLET OF GENERAL PLANS.

COMMAND CRUISERS:

USS CARACAL (CC-750)(CLASS SHIP)
LAID DOWN:28 JUNE 2887
LAUNCHED:1 JANUARY 2889
COMMISSIONED:5 OCTOBER 2889
FATE:DECOMMISSIONED:9 APRIL 2230;
PRESERVED AT FEDERATION AIR AND SPACE MUSEUM.

USS NARINARIS (CC-763)
LAID DOWN:1 JULY 2887
LAUNCHED:23 JANUARY 2889
COMMISSIONED:5 OCTOBER 2889
FATE:DECOMMISSIONED:2 APRIL 2230;
SCRAPPED: MARCH 2231.

USS SPARTAN (CC-752)
LAID DOWN:1 JULY 2887
LAUNCHED:4 FEBRUARY 2889
COMMISSIONED:5 OCTOBER 2889
FATE:DECOMMISSIONED:29 APRIL 2230;
SCRAPPED: APRIL 2231.

USS PALMAR (CC-760)
LAID DOWN:25 MAY 2888
COMMISSIONED:12 FEBRUARY 2900
FATE:DECOMMISSIONED:1 JUNE 2232;
IN RESERVE UNTIL 2250;SCRAPPED: APRIL 2251.

USS LOWE REACH (CC-761)
LAID DOWN:25 MAY 2888
LAUNCHED:5 OCTOBER 2889
COMMISSIONED:12 FEBRUARY 2900
FATE:DECOMMISSIONED:1 JUNE 2232;
IN RESERVE UNTIL 2250;SCRAPPED: APRIL 2251.

STRIKE CRUISERS:

USS RELIANCE (CC-753)
LAID DOWN:9 OCTOBER 2887
LAUNCHED:17 FEBRUARY 2889
COMMISSIONED:5 OCTOBER 2889
FATE:DECOMMISSIONED:11 AUGUST 2230;
SCRAPPED: JULY 2231.

USS ALL-FAVANY (CC-764)
LAID DOWN:28 OCTOBER 2887
LAUNCHED:1 MARCH 2889
COMMISSIONED:5 OCTOBER 2889
FATE:DESTROYED:6 MAY 2205;TO DATE, CAUSE UNCERTAIN.

USS MATANZAS (CC-750)
LAID DOWN:17 NOVEMBER 2887
LAUNCHED:1 MARCH 2889
COMMISSIONED:5 OCTOBER 2889
FATE:RECLASSIFIED AS CA ON 25 JUNE 2250;DECOMMISSIONED:11 AUGUST 2230;
SCRAPPED NOVEMBER 2231.

USS SAPHIRE (CC-761)
LAID DOWN:22 NOVEMBER 2887
LAUNCHED:19 MARCH 2889
COMMISSIONED:14 OCTOBER 2889
FATE:RECLASSIFIED AS CA ON 25 JUNE 2250;DECOMMISSIONED:11 AUGUST 2230;
SCRAPPED MARCH 2232.

LIGHT CRUISERS:

USS TAYI (CC-762)
LAID DOWN:27 MARCH 2290
COMMISSIONED:27 NOVEMBER 2888
LAUNCHED:27 MARCH 2290
COMMISSIONED:4 JULY 2290
FATE:DECOMMISSIONED:9 SEPTEMBER 2232;
IN RESERVE UNTIL 2250;SCRAPPED: SEPTEMBER 2251.

USS DOMINIMIC (CC-763)
LAID DOWN:1 NOVEMBER 2888
LAUNCHED:27 MARCH 2890
COMMISSIONED:4 JULY 2290
FATE:DECOMMISSIONED:25 DECEMBER 2232;
IN RESERVE UNTIL 2250;SCRAPPED: JANUARY 2252.

MAIN BROCHURE(SHEET)S:
A-WEAPONS MONITOR E-COMMUNICATIONS
B-HELM STATION F-ENGINEERING
C-NAVIGATION G-ENVIRON. ENGRG.
D-SCIENCE STATION H-INTERNAL SECURITY
I-EXPOS STATION J-COMPUTER WALL

USS IPSAH-DAM (CC-764)
LAID DOWN:14 DECEMBER 2888
LAUNCHED:1 APRIL 2290
COMMISSIONED:8 AUGUST 2900
FATE:DECOMMISSIONED:25 DECEMBER 2232;
IN RESERVE UNTIL 2250; SCRAPPED: MAY 2252.

HEAVY CRUISERS:

USS AURAGE (CC-767)
LAID DOWN:7 DECEMBER 2887
LAUNCHED:8 APRIL 2889
COMMISSIONED:14 OCTOBER 2889
FATE:LOST IN LINE OF DUTY,17 JULY 2228;TO DATE,CAUSE UNCERTAIN.

USS REDUINO (CC-768)
LAID DOWN:1 JANUARY 2888
LAUNCHED:30 APRIL 2889
COMMISSIONED:17 NOVEMBER 2889
FATE:DECOMMISSIONED:9 MAY 2231;
SCRAPPED MARCH 2232.

USS ARROYO (CC-769)
LAID DOWN:25 MAY 2888
LAUNCHED:12 SEPTEMBER 2889
COMMISSIONED:8 FEBRUARY 2900
FATE:DECOMMISSIONED:2 JULY 2230;
SCRAPPED JULY 2232.

J-DAMAGE & REPAIR
K-WEAPONS/DEFENSE
L-COPS STATION
M-EXPOS STATION
N-MAIN SCREEN MONITORS
O-DEFENSE/WEAPONS
N-EXPOS STATION

FLAG BROCHURE(SHEET)S:
A-ENVIRON. MONITOR G-ENVIRON. ENGRG.
B-COMMUNICATIONS H-ENGINEERING
C-SCIENCE STATIONS J-WEAPONS MONITOR
D-NAVIGATION MOLA K-NAVIGATION
E-MAIN SCREEN L-HELM STATION
F-DEFENSE/WEAPONS M-COPS STATION
N-EXPOS STATION

GENERAL:

UNLIKE MOST OTHER STARSHIPS, THE CARACAL CRUISER CLASS LEAD AN EFFECTIVE BUT SOMEWHAT SHORT LIFE. THE ENTIRE CLASS WAS TAKEN OUT OF SERVICE PREMATURELY WITH THE ADVENT OF THE COMET/777770W CLASS HEAVY CRUISERS AND THEIR STUNNING SUCCESS.FIVE OF THE NEWER SHIPS OF THE CLASS WERE LEFT IN RESERVE UNTIL 2250,BUT FORTUNATELY, THERE WAS NEVER ANY NEED TO REACTIVATE THEM(NAIR IS SOMEWHAT OF A CONSTANT THREAT).

ALTHOUGH THE CARACAL'S DID FACE STIFF COMPETITION FROM COMET/777770W AND HER SISTERS,NEVERTHELESS,THE TWO CLASSES SERVED BEHIND EACH OTHER FOR 15 YEARS(2207-2228)WITH THE DUAL PHASER SYSTEM ONLY A SEMI-SUCCESS,AND STAR FLEET CONSIDERING THE COST OF RUNNING 15 MORE CRUISERS IN ADDITION TO THE HUNDREDS OF OTHER CLASSES,THE DECISION WAS MADE IN 2229 TO DECOMMISSION ALL SHIPS OF THE CLASS.

HOWEVER,DURING ITS SERVICE,THE CARACAL CLASS CRUISER PROVED TO BE AN EXTREMELY EFFECTIVE AND VERY EFFICIENT VESSEL.EACH PARTITIONED AT ONE TIME OR ANOTHER IN MISSIONS INTO UNEXPLORED AREAS OF SPACE,AND SEVERAL RUN-INS WITH KILJOON WARSHIPS WERE ALSO RECORDED.ONLY ONCE DID THE KILJOONS APPARENTLY EMERGE SUCCESSFUL IN THESE SITUATIONS(ON 17 JULY 2228,THE CRUISER AUGUST ENGAGED AN UNIDENTIFIED VESSEL IN BATTLE,AS STATED IN THE SHIPS LOGS NO FURTHER TRANSMISSIONS WERE MADE, A RECOVER-NARRER WAS NEVER RECOVERED, AND THE SHIP NEVER RETURNED AT THE TIME.ARGUMENT WAS ON RECORD, A FULL 7 PAGES FROM KILJOON SPACE,AND MILITARY ANALYSTS STILL BELIEVE AUGUST WAS THE VICTIM OF A KILJOON BREAK-ATTACK REGARDLESS,254 LIVES WERE LOST.

ONLY ONE OTHER CRUISER, ALLEGARY, WAS EVER LOST.SHE WAS AT A RE-SUPPLY STATION WHEN AN EXPLOSION OCCURRED IN THE IMPULSE ENGINES. 77 CREWMEN AND 9 STATION PERSONNEL WERE KILLED,AND THE ALLEGARY WAS DAMAGED BEYOND REPAIRS TO DATE,THE CAUSE OF THE EXPLOSION IS UNKNOWN. ALL OTHER CARACAL CLASS CRUISERS WERE INTERACT AT THE TIME OF THEIR DECOMMISSIONING,AND THE CARACAL ITSELF IS CURRENTLY PRESERVED AT THE FEDERATION AIR & SPACE MUSEUM.

AUX.....AUXILIARY
B.....BATHROOM
ROL.....280-CHEMICAL LABORATORY
BR.....BREASTING ROOM
C.....CORRIDOR
CH.....CARGO HOLD
E.....CENTERLINE
CHL.....CHIEF SURGEONS LABORATORY
CML.....CHIEF SURGEONS OFFICE
CND.....CHIEF NAVIGATORS OFFICE
CO.....COMMANDING OFFICER
CON.....CONVALESCENT WARD
CONL.....CONDITIONING
COO.....COMMANDING OFFICERS OFFICE
CP.....CHAPEL
CPO.....CHAPEL OFFICE
CR.....CHART ROOM
CSO.....SECURITY CHIEFS OFFICE
CXL.....CARGO TRANSPORTER
DCT.....DIRECTIONAL CONTROL THRUSTERS
DO.....DENTAL OFFICE
E.....TURBO-ELEVATOR CAR
EFM.....EMERGENCY FUNCTIONS MONITOR
EL.....ENVIRONMENTAL SUIT LOCKER
ENG (ENGRS).....ENGINEERING
ENVIRON.....ENVIRONMENTAL

A FOURTH LIGHT CRUISER, THE U.S.S. JAMES VAN ALLEN, WAS AUTHORIZED IN 2887,BUT WAS CANCELLED IN EARLY 2888.

STANDARD ABBREVIATIONS

ESR.....ENGINEERING SUPPLY ROOM
EXEC.....EXECUTIVE OFFICER
EXL.....EXECUTIVE OFFICERS OFFICE
EXR.....EMERGENCY TRANSPORTER
FL.....FLAG
FWD.....FORWARD
GA.....GANNERY (S)
GUR.....GENERAL UTILITY ROOM
IC.....INSPECTION CORRIDOR
ICU.....INTENSIVE CARE UNIT
IRL.....ISOLATION ROOM
L.....LOCKER
LAB.....LABORATORY
LL.....LIBRARY LOUNGE
LO.....LOUNGE
M.....METER(S)
MACH.....MACHINERY
MBR.....MEETING/BREKING ROOM
MRL.....DUTY NURSE
NO.....NOCOTOP OFFICE
MON.....MONITOR
MRM.....MESSROOM (DINING AREA)
MRP.....MEDICAL RESEARCH LAB
NO.....NUMBER
OBS.....OBSERVATIONS
OK.....OBSERVATION LOUNGE

OR.....OPERATING ROOM
P.....PORT
PLS.....PLACES
PSL.....PORT & STARBOARD
PWT.....PUMPING & WIRING TRUNK
RM.....ROOM
SAL.....SMALL ARMS ARSENAL
SL.....SECURITY OFFICE
ST.....STORAGE
STD.....STANDARD
SYM.....SYMMETRY
T/B.....TOP AND BOTTOM
TB.....THERAPEUTIC BATHS
T/E.....TURBO-ELEVATOR
TL.....TOILET
TYD.....TYPICAL
WR.....WAITING ROOM
XR.....TRANSPORTER

OFFICER GRADES:

CAPT.....CAPTAIN
CMDR.....COMMANDER
LT.....LIEUTENANT
ENS.....ENSON

*ALL DATES, THIS SHEET, TERRAN OLD CALENDAR