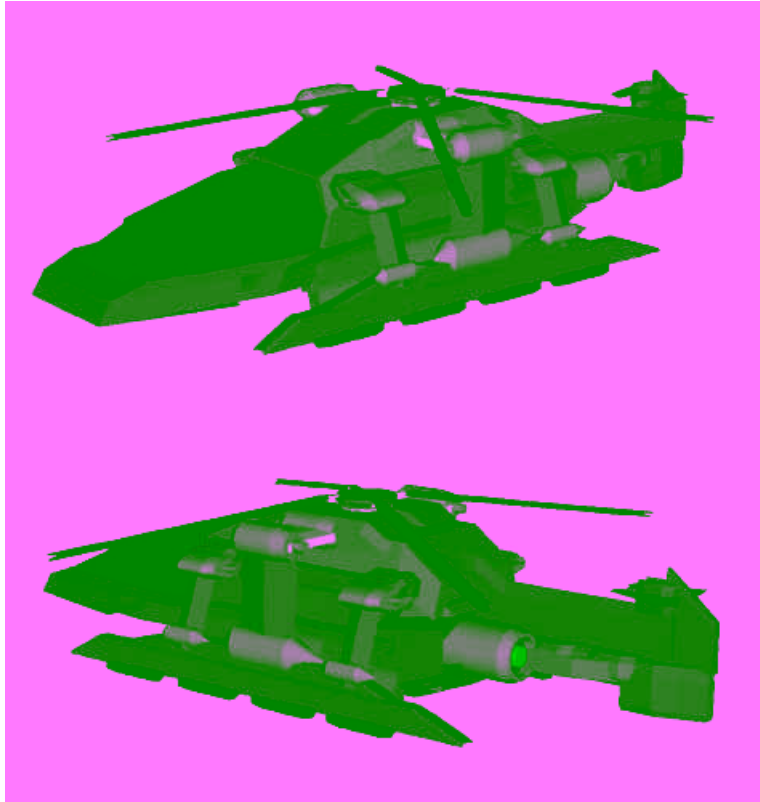


Raven Vectored Thrust Chopper

Branson Hagerty (Blackjack's Shadowrun Page <http://shadowrun.html.com/users/blackjack/>) Posted September 22, 1997



Based on a military light-cargo version of the Experimental Wasp II, the Raven has been equipped with eight vectored thrust units which allow it to operate with the rotor retracted for limited durations. This allows the Raven to land in and fly through alleys, duck into narrow tunnels, navigate into small garages, and take off from moving flatbed trailers. Never again will you have to look for an open space to land - EVERYWHERE is an airport for the Raven. This vehicle is truly the inner-city rigger's dream.

Handling: 4 (6 Vectored Thrust)

Speed: 65/130 (15/45 VT)

Body: 2

Armor: 1

Signature: 3

Autopilot: 2

Seating: Twin Bucket/Dual Bench

Access: Full Canopy, Right Rear Cargo Door

Storage: 10 CF

Economy: 1.5 km per liter (.1 km per liter VT)

Fuel: IC/150 liters

Sensors: 3

ECM: 3

Cost: 1,100,000

Other Accessories: Dual Ejection Seats

Options Available On Request: Under-Chin Micro-Turret, Dual 5CF Skid Ordinance Racks, Mid-Fuselage Small Turret.

>>>>>>[I can't even begin to tell you how many choppers I've lost because I didn't have anywhere to land. Once the mil or secs find you you're pretty much wasted in a normal 'copter unless you have some heavy weapons or ECM gear on board. Half the time they'll just keep chasing you around until you run out of gas and fall from the sky.

But not with this baby. I've put my Raven in the damnedest of places, the most recent being a Puget Sound sewer outlet. Just took the thing into the pipe on VE. Lone Star didn't even stop to take a gander; they figured I pitched into the ocean. I love this toy.

However, you do have to watch the fuel gauge while on Vectored Thrust. Those jets just drink petro. It's almost a necessity to sacrifice the skid ordinance racks for extra fuel tanks.]<<<<<<

-Street Hawk (22:31:11/09-17-58)