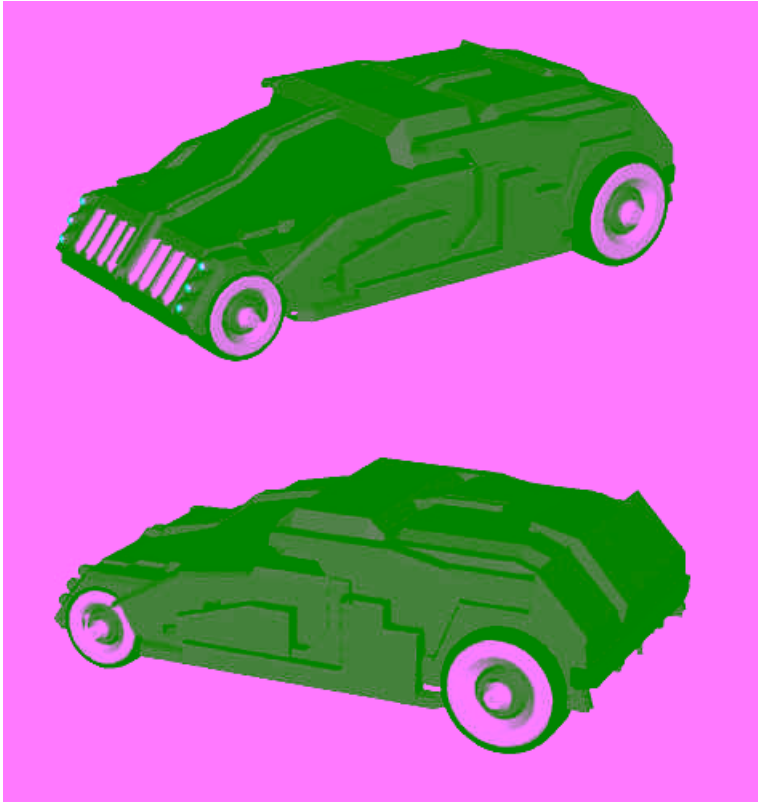




Maverick Courier Vehicle

Branson Hagerty (Blackjack's Shadowrun Page <http://shadowrun.html.com/users/blackjack/>) Posted September 18, 1997



When you need that package there NOW, the Maverick is the vehicle for the job. Essentially a block of armor on wheels, the Maverick's can take a hit from most anything and keep on moving. Its 10cm thick armored canopy offers excellent visibility and the dual GM Turbo Customized High Performance engines provide an insane amount of pickup and speed and the security of redundancy. Full rigger gear is included.

Handling: 4/4

Speed: 80/240

Body: 4

Armor: 9

Signature: 1

Autopilot: 2

Seating: Twin Bucket

Access: 2 Split Canopy

Storage: 10 CF (Trunk)

Economy: 15km per liter

Fuel: IC/60 liters

Cost: 180,000

Other Accessories: Cargo Protection System (gives trunk area 3 additional points of armor protection), rigger control gear.

NOTES: When operating above 175 kph, roll 1D6. On a roll of 6, one of the engines fails completely. In the event of engine failure, speed is halved until the engine is repaired (B/R Target: 8, Base Time: 7 Days, Base Cost: 10,000).

>>>>>[This vehicle is primarily used by couriers who need a street legal and aesthetically cop friendly vehicle to move small amounts of expensive goods, such as chips, drugs, chemicals, etc. In addition to providing incredible speed, the redundant engines (one in front, one in back) also allow the vehicle to keep moving if one of the engines takes a hit. Trying to install a weapons system is all but futile and would necessitate the removal of the Cargo Protection System, one of the vehicle's big pluses.]<<<<<

-Street Hawk (04:12:42/08-17-97)