

GUIDE TO EASTERN WEAPONS™

For the Pathfinder Roleplaying Game. A collection of 63 new and magical weapons inspired by Eastern cultures. Requires the *Pathfinder Roleplaying Game Core Rulebook* and *Pathfinder Roleplaying Game Ultimate Combat*, but fully enhanced with links to d2opfsrd.com for easy reference!



TABLE 11-1 EASTERN WEAPONS

01	<i>bagh nakh (tiger claws)</i>
02-04	<i>blowgun</i>
05-06	<i>blowgun, greater</i>
07-08	<i>butterfly sword</i>
09-10	<i>chakram</i>
11-12	<i>chigiriki</i>
13-14	<i>crossbow, repeating</i>
15-16	<i>dai tsuchi</i>
17-18	<i>daikyu</i>
19-21	<i>dao</i>
22-23	<i>dao, dadao</i>
24-26	<i>darts, blowgun</i>
27-28	<i>darts, fukimi-bari</i>
29	<i>deer horn knives</i>

30-31	<i>emei piercer</i>
32	<i>fighting fan</i>
33-34	<i>fighting sticks</i>
35-36	<i>jian</i>
37-38	<i>jutte</i>
39-40	<i>kama</i>
41	<i>katana</i>
42-43	<i>katar</i>
44-45	<i>kawanga</i>
46-47	<i>kukri</i>
48	<i>kusari-fundo</i>
49	<i>kusari-gama</i>
50-51	<i>lajatang</i>
52	<i>meteor hammer</i>
53	<i>monk's spade</i>
54-55	<i>nagamaki</i>
56	<i>naginata</i>
57-58	<i>needles, blowgun</i>
59	<i>nekode</i>
60-61	<i>nine ring broadsword</i>
62-63	<i>ninja-to</i>
64	<i>nunchaku</i>
65	<i>ono</i>
66	<i>pata</i>
67-68	<i>qiang</i>
69	<i>sai</i>
70	<i>saingham</i>
71-72	<i>sang kauw</i>
73	<i>sasumata</i>
74	<i>shikomi-zue</i>
75-77	<i>shuriken</i>
78-79	<i>sodegarami</i>
80	<i>staff, three-section</i>
81-82	<i>tanto</i>
83	<i>tessen</i>
84-85	<i>tetsubo</i>
86-87	<i>throwing spike</i>
88-89	<i>tiger fork</i>
90	<i>tiger hook sword</i>
91-92	<i>tonfa</i>
93-94	<i>urumi</i>
95	<i>wakizashi</i>
96	<i>wind and fire wheels</i>
97-98	<i>yari</i>
99-100	<i>yumi</i>

Compatibility with the Pathfinder Roleplaying Game requires the Pathfinder Roleplaying Game from Paizo Publishing, LLC. See <http://paizo.com/pathfinderRPG> for more information on the Pathfinder Roleplaying Game. Paizo Publishing, LLC does not guarantee compatibility, and does not endorse this product

NEW WEAPONS

The following weapons are additions to those available in the *Pathfinder Roleplaying Game Core Rulebook* and *Pathfinder Roleplaying Game Ultimate Combat*.

BAGH NAKH (TIGER CLAWS)

Aura no aura (non-magical); **CL** --
Slot none; **Price** 8 gp; **Weight** 3 lbs.
Country of origin India

DESCRIPTION

The bagh nakh is a strap or glove fitted with spikes fitted along the inside of the hand. When using the bagh nakh, an opponent cannot use a disarm action to disarm the character. An attack with the bagh nakh is considered an armed attack.

A monk using a bagh nakh fights with his unarmed base attack bonus, including his more favorable number of attacks per round, along with other applicable modifiers.

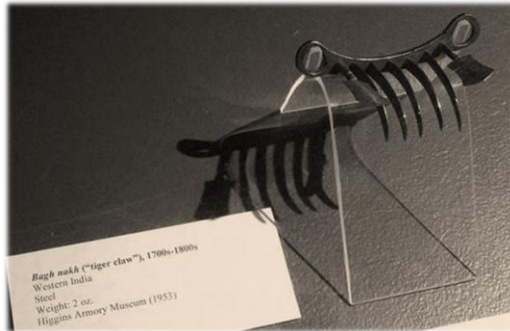


Photo courtesy of Wikipedia Commons, used under a Creative Commons License.

BLOWGUN, GREATER

Aura no aura (non-magical); **CL** --
Slot none; **Price** 5 gp; **Weight** 2 lbs.
Country of origin Various Southeast Asia

DESCRIPTION

The greater blowgun fires blowgun darts (slightly smaller than the throwing variety) and can also deliver poisons.



Photo courtesy of Wikipedia Commons, used under a Creative Commons License.

CHAKRAM

Aura no aura (non-magical); **CL** --
Slot none; **Price** 15 gp; **Weight** 2 lbs.
Country of origin India

DESCRIPTION

The chakram is a throwing disk about 1 foot in diameter. The outer rim is sharpened.



Photo courtesy of Wikipedia Commons, used under a Creative Commons License.

CHIGIRIKI

Aura no aura (non-magical); **CL** --
Slot none; **Price** 8 gp; **Weight** 8 lbs.
Country of origin Japan

DESCRIPTION

The chigiriki is a double weapon allowing attacks with the spear end or whip opponents with the chain end to entangle as a chain.

Because the chain end can wrap around an opponent's leg or limb, it can be used to make trip attacks. If the character becomes tripped with their own trip attempt, they can drop the chigiriki to avoid being tripped.

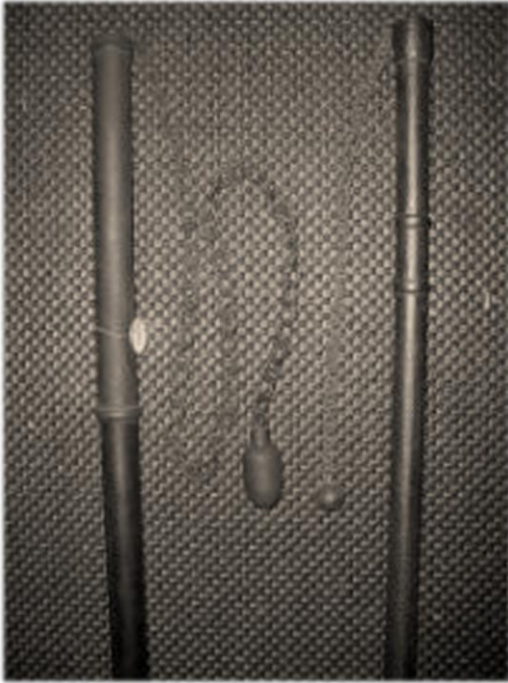


Photo courtesy of Wikipedia Commons, used under a [Creative Commons License](#).

DAIKYU

Aura no aura (non-magical); **CL** --
Slot none; **Price** 75 gp; **Weight** 3 lbs.
Country of origin Japan

DESCRIPTION

As *longbow* as described in the *Pathfinder Roleplaying Game Core Rulebook*, with the following exception: If you have the *weapon finesse* (*daikyu*) feat, you can use the bow

while mounted at +4 to the attack roll while your mount is moving at double speed or faster.

DAI TSUCHI

Aura no aura (non-magical); **CL** --
Slot none; **Price** 12 gp; **Weight** 5 lbs.

DESCRIPTION

See *warhammer* in the *Pathfinder Roleplaying Game Core Rulebook*.

REAL-WORLD HISTORY

Country of origin Japan

DAO

Aura no aura (non-magical); **CL** --
Slot none; **Price** 15 gp; **Weight** 4 lbs.
Country of origin China

DESCRIPTION

The dao is a heavy sword with a slight curve and a single edge. Often the last few inches of the back edge are sharpened as well.



Photo courtesy of Wikipedia Commons, used under a [Creative Commons License](#).

DAO, DADAO

Aura no aura (non-magical); **CL** --
Slot none; **Price** 75 gp; **Weight** 8 lbs.
Country of origin China

DESCRIPTION

The dadao is a two-handed version of the dao.

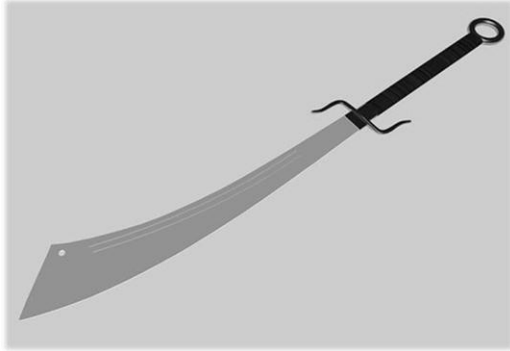


Photo courtesy of Wikipedia Commons, used under a Creative Commons License.

DEER HORN KNIVES

Aura no aura (non-magical); **CL** --
Slot none; **Price** 3 gp; **Weight** 1 lbs.
Country of origin China

DESCRIPTION

The deer horn knives, or “crescent moon knives”, are bladed weapons consisting of two steel crescents crossing lengthwise. This crossing produces four curved, antler like points. The knives are usually used in pairs.

A monk using the deer horn knives fights with his unarmed base attack bonus, including his more favorable number of attacks per round, along with other applicable modifiers.



Photo courtesy of Wikipedia Commons, used under a Creative Commons License.

FIGHTING STICKS

Aura no aura (non-magical); **CL** --
Slot none; **Price** --; **Weight** 2 lbs.
Country of origin Phillipines

DESCRIPTION

These batons are often made from bamboo or other hardened materials. When used in pairs, the fighting sticks can deliver quick strikes that can incapacitate most targets.

A monk using the fighting sticks fights with his unarmed base attack bonus, including his more favorable number of attacks per round, along with other applicable modifiers. In addition, the monk can use the fighting sticks as if he had the two weapon fighting feat.



Photo courtesy of Wikipedia Commons, used under a Creative Commons License.

FUKIMI-BARI (MOUTH DARTS)

Aura no aura (non-magical); **CL** --
Slot none; **Price** 1 gp; **Weight** -- lbs.

DESCRIPTION

These are needlelike darts that are typically made of metal that are concealed in the mouth and then spit at opponent. The effective range of the fukimi-bari is extremely short, and they do little damage.

Up to three darts can be spit per attack, but only at the same target.

The Strength modifier to damage *is not* applied when using the fukimi-bari.

The cost and weight listed is for one mouth dart.

REAL-WORLD HISTORY

Country of origin Japan

JIAN

Aura no aura (non-magical); **CL** --

Slot none; **Price** 15 gp; **Weight** 4 lbs.

Country of origin China

DESCRIPTION

This double-edged sword is akin to the *longsword* as described in the *Pathfinder Roleplaying Game Core Rulebook* with the following exception:

A monk using the jian fights with his unarmed base attack bonus, including his more favorable number of attacks per round, along with other applicable modifiers.



Photo courtesy of Wikipedia Commons, used under a Creative Commons License.

KATAR

Aura no aura (non-magical); **CL** --

Slot none; **Price** 10 gp; **Weight** 3 lbs.

Country of origin India

DESCRIPTION

The katar is a push dagger, a blade mounted on a horizontal hand grip which rests above the knuckles.



Photo courtesy of Wikipedia Commons, used under a Creative Commons License.

KAWANGA

Aura no aura (non-magical); **CL** --

Slot none; **Price** 10 gp; **Weight** 3 lbs.

Country of origin Togo

DESCRIPTION

A kawanga is a length of light chain with a weight at one end and a sharp grapping hook on the other. It can be whipped around quickly, striking with blows from either end. One end can also be swung out as to entangle an opponent.

The kawanga can be used as a double weapon *or* as a reach weapon. Unlike other weapons with reach, it can be used against an adjacent foe. In this case, only one end of the weapon will cause damage. It cannot be used as a double weapon *with* reach.

Because the chain can wrap around an opponent's leg or limb, it can be used to make trip attacks. If the character becomes tripped with their own trip attempt, they can drop the chain to avoid being tripped.

When using the kawanga, you get a +2 bonus on Combat Maneuver Checks to trip or disarm an enemy.

The *weapon finesse* feat can be used to apply the Dexterity modifier instead of the Strength modifier to attack rolls with the chain.

A kawanga can also be used as a climbing tool. It is the equivalent of a 10' rope with a grappling hook attached.

KUSARI-FUNDO

Aura no aura (non-magical); **CL** --
Slot none; **Price** 5 gp; **Weight** 5 lbs.
Country of origin Japan

DESCRIPTION

The kusari-fundo or 'manriki-gusari' is a simple chain with weighted ends. It can be whirled quickly, striking with hard blows from the weights. One end can also be swung out to entangle an opponent.

The chain can be used as a double weapon.

When using the kusari-fundo, you get a +2 bonus on Combat Maneuver Checks to trip or disarm an enemy.

The *weapon finesse* feat can be used to apply the Dexterity modifier instead of the Strength modifier to attack rolls with the chain.



Photo courtesy of Wikipedia Commons, used under a Creative Commons License.

KUSARI-GAMA

Aura no aura (non-magical); **CL** --
Slot none; **Price** 10 gp; **Weight** 3 lbs.
Country of origin Japan

DESCRIPTION

The kusari-gama is a length of chain with a *kama* (as described in the *Pathfinder Roleplaying Game Core Rulebook*) at one end.

The kusari-gama can be used as a double weapon or as a reach weapon. Unlike typical weapons with reach, it can be used against an adjacent foe. In this case, only one end of the weapon will cause damage. It cannot be used as a double weapon *with* reach.

When using the kusari-gama, you get a +2 to CMB on checks to trip or disarm an enemy.



Photo courtesy of Wikipedia Commons, used under a Creative Commons License.

LAJATANG

Aura no aura (non-magical); **CL** --
Slot none; **Price** 90 gp; **Weight** 7 lbs.
Country of origin Japan

DESCRIPTION

The lajatang is a double weapon with crescent-shaped blades on either end.

A monk using a lajatang fights with his unarmed base attack bonus, including his more favorable number of attacks per round, along with other applicable modifiers.

When using the lajatang, you get a +2 bonus on Combat Maneuver Checks to trip an enemy.

NAGAMAKI

Aura no aura (non-magical); **CL** --
Slot none; **Price** 9 gp; **Weight** 12 lbs.
Country of origin Japan

DESCRIPTION

A nagamaki is a pole arm similar to the *naginata*, but somewhat shorter. It *does not* have reach. It is commonly used by mounted samurai.



Photo courtesy of Wikipedia Commons, used under a Creative Commons License.

NEEDLES, BLOWGUN

Aura no aura (non-magical); **CL** --
Slot none; **Price** 1 gp; **Weight** -- lbs.
Country of origin Various Southeast Asia

DESCRIPTION

These 2-inch-long iron needles are sold in a small wooden case of 2. A full case is so light

that its weight is negligible. The tips of the needles are often coated with poison.

The price and weight listed are for 20 needles.

NEKODE

Aura no aura (non-magical); **CL** --
Slot none; **Price** 5 gp; **Weight** 2 lbs.
Country of origin Japan

DESCRIPTION

A nekode is a strap or glove fitted with spikes in the palm. It is a favored weapon and climbing tool of ninja.

When using a nekode, an opponent cannot use a disarm action to disarm the character. An attack with a nekode is considered an armed attack.

A monk using a nekode fights with his unarmed base attack bonus, including his more favorable number of attacks per round, along with other applicable modifiers.

Using a pair of nekodes while climbing gives a +1 circumstance bonus on Climb checks, this bonus does not stack with the bonuses given by the climber's kit.

NINJA-TO

Aura no aura (non-magical); **CL** --
Slot none; **Price** 200 gp; **Weight** 4 lbs.
Country of origin Japan

DESCRIPTION

A ninja-to is a short sword similar to the wakizashi and is the standard sword of the ninja. The scabbard of the ninja-to is a multipurpose tool. It is open at both ends allowing it to be used as a blowpipe for various powders or poisons. It is also stiff and strong allowing it to be used as the rung of a ladder or even as a make-shift club.



Photo courtesy of Wikipedia Commons, used under a Creative Commons License.

ONO

Aura no aura (non-magical); **CL** --
Slot none; **Price** 20 gp; **Weight** 12 lbs.
Country of origin Japan

DESCRIPTION

As *greataxe* described in the *Pathfinder Roleplaying Game Core Rulebook*.



Photo courtesy of Wikipedia Commons, used under a Creative Commons License.

PATA

Aura no aura (non-magical); **CL** --
Slot none; **Price** 20 gp; **Weight** 2 lbs.
Country of origin India

DESCRIPTION

As *longsword* in the *Pathfinder Roleplaying Game Core Rulebook* with the following exceptions:

Because the sword is forged within a gauntlet instead of a hilt, the weapon cannot be wielded two-handed.

When using the pata, an opponent cannot use a disarm action to disarm the character.



Photo courtesy of Wikipedia Commons, used under a Creative Commons License.

QIANG

Aura no aura (non-magical); **CL** --
Slot none; **Price** 15 gp; **Weight** 6 lbs.
Country of origin China

DESCRIPTION

This spear has a leaf shaped blade and red horse-hair tassel lashed just below. The tassel serves a tactical purpose, and is not simply for decoration. During combat, the addition of the tassel aids in blurring the vision of the opponent, allowing you to immediately make a feint (as a free action).

As the *yari* (below), the qiang can do either piercing or slashing damage. It also can be braced for more damage as *spear* in the *Pathfinder Roleplaying Game Core Rulebook*.



Photo courtesy of Wikipedia Commons, used under a Creative Commons License.

SANG KAUW

Aura no aura (non-magical); **CL** --
Slot none; **Price** 95 gp; **Weight** 10 lbs.
Country of origin Indonesia

DESCRIPTION

The sang kauw is a double weapon with spear points at both ends and either a

buckler or another crescent guard in the middle of the staff portion. The buckler (or blade) in the middle of the weapon gives a character a +1 shield bonus to Armor Class if they attack with only one end of the sang kauw in a round.

SASUMATA

Aura no aura (non-magical); **CL** --
Slot none; **Price** 8 gp; **Weight** 8 lbs.
Country of origin Japan

DESCRIPTION

The sasumata or “spear fork” is another pole arm designed to capture opponents. The user who hits a Small or Medium-sized opponent with a sasumata can immediately initiate Combat Maneuver Check to grapple as a free action. If the *grapple* succeeds, the opponent is immediately pinned.

The sasumata has reach, but cannot be used against adjacent opponents.



Photo courtesy of Wikipedia Commons, used under a [Creative Commons License](#).

SHIKOMI-ZUE

Aura no aura (non-magical); **CL** --
Slot none; **Price** 100 gp; **Weight** 3 lbs.
Country of origin Japan

DESCRIPTION

This weapon, favored by ninja and other stealthy warriors, is a stout wooden quarterstaff, but with a quick twist or press of a hidden button, a spear head springs from one end making it into a *short spear* as described in the *Pathfinder Roleplaying Game Core Rulebook*.

SODEGARAMI

Aura no aura (non-magical); **CL** --
Slot none; **Price** 4 gp; **Weight** 5 lbs.
Country of origin Japan

DESCRIPTION

The sodegarami, or “sleeve-tangler”, is a specialized weapon used to catch and entangle an opponent. The weapon has multiple barbed heads, facing forwards and backwards. The pole is sturdy hardwood with sharp metal barbs or spines attached to metal strips on one end to keep the person being captured from grabbing the shaft. It is normally used to hook and catch the clothing of an opponent.

When making an attack in this fashion, you can immediately initiate Combat Maneuver Check to grapple as a free action.

The sodegarami has reach, but cannot be used against adjacent opponents.

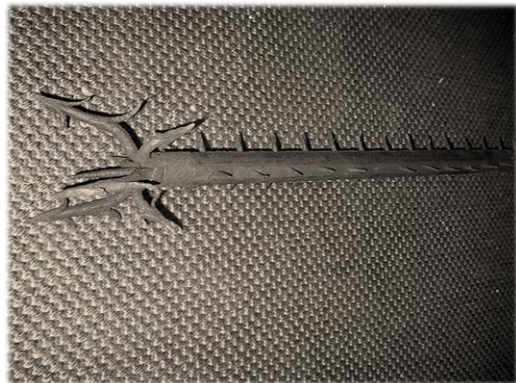


Photo courtesy of Wikipedia Commons, used under a [Creative Commons License](#).

TANTO

Aura no aura (non-magical); **CL** --
Slot none; **Price** 2 gp; **Weight** 1 lbs.
Country of origin Japan

DESCRIPTION

As *dagger* in the *Pathfinder Roleplaying Game Core Rulebook*.



Photo courtesy of Wikipedia Commons, used under a Creative Commons License.

TESSEN

Aura no aura (non-magical); **CL** --
Slot none; **Price** 30 gp; **Weight** 1 lbs.
Country of origin Japan

DESCRIPTION

Similar to the *fighting fan*, this weapon appears to be nothing more than a beautiful fan; however the vanes of the fan are crafted from steel and is primarily used as bludgeoning weapon.

When used offensively, it can be used as a make-shift *club* as described in the *Pathfinder Roleplaying Game Core Rulebook*. When used defensively, it offers a +1 dodge bonus to AC. The tessen can only be used for offense or defense during the combat round. You can choose to use the tessen for either offense or defense at the beginning of each round.



Photo courtesy of Wikipedia Commons, used under a Creative Commons License.

THREE-SECTION STAFF

Aura no aura (non-magical); **CL** --
Slot none; **Price** 10 gp; **Weight** 6 lbs.
Country of origin Japan

DESCRIPTION

This weapon is composed of three sections of wood of equal lengths joined by chain, leather, or rope.

A monk using a three-section staff (for which he must take the *weapon focus* feat) fights with his unarmed base attack bonus, including his more favorable number of attacks per round, along with other applicable modifiers.

When using the three-section staff, you get a +2 bonus on Combat Maneuver Checks to trip an enemy.

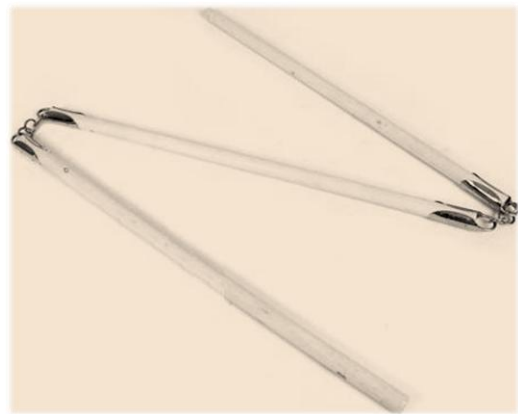


Photo courtesy of Wikipedia Commons, used under a Creative Commons License.

THROWING SPIKE

Aura no aura (non-magical); **CL** --
Slot none; **Price** 5 gp; **Weight** .5 lbs.
Country of origin Japan

DESCRIPTION

These are sharp metal spikes that are only a few inches long. These weapons are also known as 'sleeve darts,' because they can be easily concealed. When looking for the concealed throwing spikes, the DC should be increased by +10 provided the sleeves concealing the spikes are loose.

The price and weight listed are for 3 spikes.

TIGER HOOK SWORD

Aura no aura (non-magical); **CL** --
Slot none; **Price** 15 gp; **Weight** 4 lbs.
Country of origin China

DESCRIPTION

These weapons have a blade similar to a long sword, though with a prong or hook (similar to a shepherd's crook) near the tip. The hilt guards are often in the style of butterfly swords. These swords are often used in pairs and require the weapon focus (hook sword) feat to use correctly.

The backs of the hook swords can be used as long swords. The hooks of the swords can be used to trip opponents. You get a +2 bonus on Combat Maneuver Checks to trip an enemy. The end of the hilt is usually sharpened into a dagger (and therefore can be used as a double weapon). The choice to use the hook swords as a double weapon must be declared at the beginning of the combat round.

When used as a single weapon, the crescent guard can be used for blocking *or* slashing. When used defensively, the crescent guard provides a +1 dodge bonus to AC.

When used as a double weapon, the two swords can be linked together providing a weapon with reach that can be used to slash at a target or trip an opponent.



Photo courtesy of Wikipedia Commons, used under a [Creative Commons License](#).

WIND AND FIRE WHEELS

Aura no aura (non-magical); **CL** --
Slot none; **Price** 50 gp; **Weight** 2 lbs.
Country of origin China

DESCRIPTION

Much like the chakram (above), the wind and fire wheels are flat metal rings which can be used in melee or thrown. They are approximately 15" in diameter and one quarter of the ring is padded as the grip. The rims of the wind and fire wheels have protruding flame-styled blades. They are meant to be used in pairs.

When using the wind and fire wheels, you get a +2 bonus on Combat Maneuver Checks to disarm an enemy.

A monk using a the wind and fire wheels can strike with his unarmed base attack bonus, including his more favorable number of attacks per round, along with other applicable modifiers.

When fighting defensively while wielding the wind and fire wheels, the user gets an additional +1 dodge bonus for each wheel wielded (to a maximum number of the number of arms that the defender has).



Photo courtesy of Wikipedia Commons, used under a [Creative Commons License](#).

YARI

Aura no aura (non-magical); **CL** --
Slot none; **Price** 15 gp; **Weight** 6 lbs.
Country of origin Japan

DESCRIPTION

The yari is a spear characterized by a flat metal blade at the tip much like a dagger. It can do either piercing or slashing damage. It also can be braced for more damage as spear in the *Pathfinder Roleplaying Game Core Rulebook*.



Photo courtesy of Wikipedia Commons, used under a Creative Commons License.

YUMI

Aura no aura (non-magical); **CL** --
Slot none; **Price** 100 gp; **Weight** 3 lbs.
Country of origin Japan

DESCRIPTION

As composite longbow in the *Pathfinder Roleplaying Game Core Rulebook* with the following exceptions:

This great bow is over 6 feet in length, often surpassing the height of the archer. They are traditionally made by laminating bamboo, wood, and leather. The grip is

asymmetrical (about two thirds of the distance from the upper tip).

The effective range increment for the yumi is 150 feet.

Small or Tiny-sized characters cannot use the yumi.

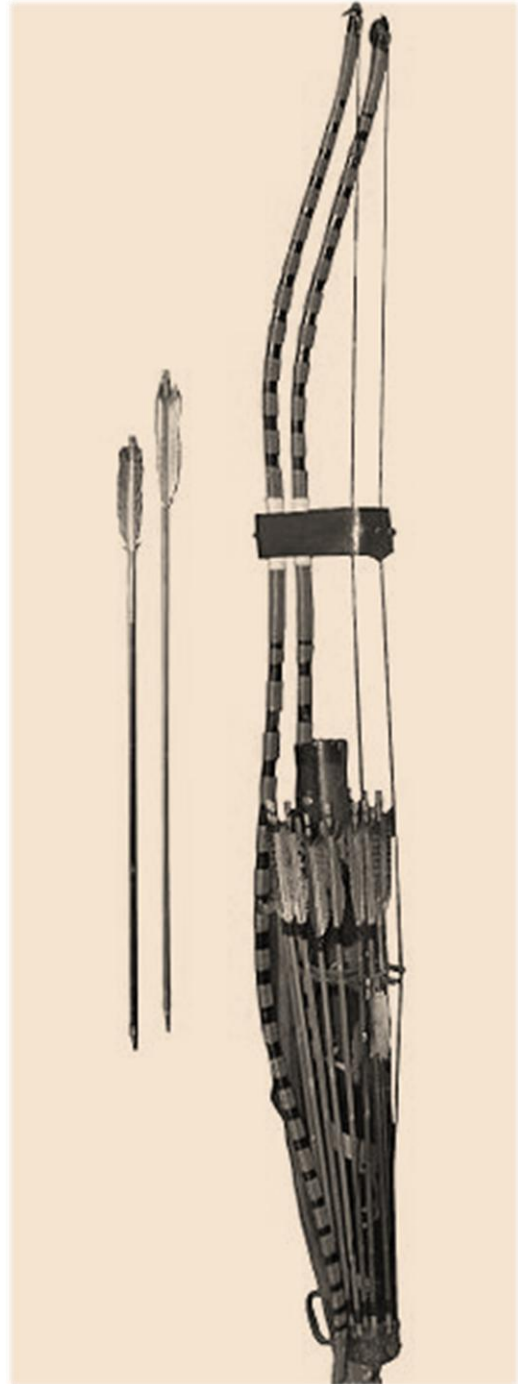


Photo courtesy of Wikipedia Commons, used under a Creative Commons License.

MAGIC WEAPONS

The following magical Eastern weapons draw upon spells listed in *Pathfinder Roleplaying Game Ultimate Combat*.

BLOWGUN, NEVERENDING +1

Aura moderate conjuration; **CL** 5th

Slot none; **Price** 4,150 gp; **Weight** 1 lbs.

DESCRIPTION

The blowgun is a long tube through which you fire needles. A needle can deliver poisons of either contact or injury type.

When this blowgun is being used, the user will never run out of ammunition. It must be loaded as normal, but each round there is always one more needle or dart in the wielder's pouch.

See the spell *abundant ammunition* in *Pathfinder Roleplaying Game Ultimate Combat*.

CONSTRUCTION

Requirements Craft Magic Arms and Armor, *abundant ammunition*; **Cost** 2,075 gp

BUTTERFLY SWORD OF KINETIC REVERBERATION +2

Aura moderate transmutation; **CL** 5th

Slot none; **Price** 16,170 gp; **Weight** 1 lbs.

DESCRIPTION

The butterfly sword is a short, heavy weapon often used in pairs. A monk using a butterfly sword fights with his unarmed base attack bonus, including his more favorable number of attacks per round, along with other applicable modifiers.

When an attacker makes a successful to hit roll against the wielder of this weapon, the wielder can choose to automatically deflect. In doing so the wielder forfeits their attack that round, but damage rolled by the attacker is directed back to the attacker's weapon. This may cause the attacker's weapon to break or shatter.

See *Common Armor, Weapon, and Shield Hardness and Hit Points* in the *Pathfinder Roleplaying Game Core Rulebook*, and the

spell *kinetic reverberation* in *Pathfinder Roleplaying Game Ultimate Combat*.

CONSTRUCTION

Requirements Craft Magic Arms and Armor, *kinetic reverberation*; **Cost** 8,085 gp

CROSSBOW, REPEATING, LONGSHOT +1

Aura moderate transmutation; **CL** 5th

Slot none; **Price** 4,550 gp; **Weight** # lbs.

DESCRIPTION

This is a *heavy repeating crossbow* as described in the *Pathfinder Roleplaying Game Core Rulebook*, except that it has a +10 bonus to range.

See the spell *longshot* in *Pathfinder Roleplaying Game Ultimate Combat*.

CONSTRUCTION

Requirements Craft Magic Arms and Armor, *longshot*; **Cost** 2,275 gp

DAI TSUCHI OF UNWILLING FLIGHT +3

Aura moderate evocation; **CL** 7th

Slot none; **Price** 36,150 gp; **Weight** 5 lbs.

DESCRIPTION

On a successful hit, the wielder of this weapon can choose to knock a target back 25 feet with a wave of telekinetic energy rather than doing damage. A target can choose to make a DC 17 Will save to avoid knockback and take the damage instead.

See the spell *telekinetic charge* in *Pathfinder Roleplaying Game Ultimate Combat*.

CONSTRUCTION

Requirements Craft Magic Arms and Armor, *telekinetic charge*; **Cost** 18,075 gp

DAIKYU OF RELOADING HANDS +2

Aura moderate conjuration; **CL** 5th

Slot none; **Price** 16,225 gp; **Weight** 3 lbs.

DESCRIPTION

Once per round, this weapon reloads itself with conjured ammunition. If you have the *weapon finesse* (*daikyu*) feat, you can use the bow while mounted at +4 to the attack

roll while your mount is moving at double speed or faster.

See the spell *reloading hands* in *Pathfinder Roleplaying Game Ultimate Combat*.

CONSTRUCTION

Requirements Craft Magic Arms and Armor, *reloading hands*; **Cost** 8,100 gp

DARTS, BLOWGUN, UNERRING +2

Aura moderate transmutation; **CL** 5th

Slot none; **Price** 16,150 gp; **Weight** --

DESCRIPTION

These darts are somewhat smaller than throwing darts and can carry poison. They have a critical range of 17-20, and have a x3 modifier to critical damage.

See the spell *unerring weapon* in *Pathfinder Roleplaying Game Ultimate Combat*.

CONSTRUCTION

Requirements Craft Magic Arms and Armor, *unerring weapon*; **Cost** 8,075 gp

EMEI PIERCERS OF PRECISION +3

Aura moderate divination; **CL** 5th

Slot none; **Price** 36,150 gp; **Weight** --

DESCRIPTION

These emei daggers are meant to be used in pairs. Each shaft can be mounted to a detachable ring that is typically worn on the middle finger. As the twin daggers spin around they give you get a +2 bonus on Combat Maneuver Checks to use feint against an enemy.

Whenever you confirm a critical hit with this weapon, roll twice and take the best result.

See the spell *locate weakness* in *Pathfinder Roleplaying Game Ultimate Combat*.

DESCRIPTION

Requirements Craft Magic Arms and Armor, *locate weakness*; **Cost** 18,075 gp

FIGHTING FAN

OF BROW GASHING +2

Aura moderate necromancy; **CL** 5th

Slot none; **Price** 16,150 gp; **Weight** --

DESCRIPTION

This weapon appears to be nothing more than a beautiful fan, however the vanes of the fan are crafted from steel and the tips are sharpened.

This weapon inflicts gruesome head wounds to the target. In addition to normal damage, a target struck by this weapon takes an additional 2 points of bleed damage each round. This continues until the wound is stabilized or healed. On the 5th round, the target is blinded by the blood from the wound getting into their eyes.

When wielding this fighting fan, users also get a +2 circumstance bonus to perform a *feint* Combat Maneuver.

See the spell *brow gasher* in *Pathfinder Roleplaying Game Ultimate Combat*.

CONSTRUCTION

Requirements Craft Magic Arms and Armor, *brow gasher*; **Cost** 8,075 gp

JUTTE OF CERTAINTY +2

Aura transmutation; **CL** 5th

Slot none; **Price** 16,150 gp; **Weight** 1 lbs.

DESCRIPTION

The jutte is similar to the *sai* (as described in the *Pathfinder Roleplaying Game Core Rulebook*) with the exception that it has only has only one hook rather than two.

The wielder of this weapon gains a +4 competence bonus on Acrobatics and Climb checks, a +4 bonus to CMB, and immune to the disarm maneuver.

See the spell *certain grip* in *Pathfinder Roleplaying Game Ultimate Combat*.

CONSTRUCTION

Requirements Craft Magic Arms and Armor, *certain grip*; **Cost** 8,075 gp

KATANA OF VENGEANCE +5

Aura moderate transmutation; **CL** 9th

Slot none; **Price** 100,200 gp; **Weight** 6 lbs.

DESCRIPTION

The katana is a masterwork sword that grants a +1 bonus on the attack rolls. For a samurai character, a katana is more than

just a sword – it's a part of their honor, heritage, and soul. It is a very personal item and cannot be used by others without the honor of the character being slighted. If a stranger touches the scabbard, it is considered an insult, to draw the blade out without permission is not only an insult to the samurai, but to the sword.

At the start of combat, the wielder of this weapon selects one target. On a successful hit, the target immediately feels pain more acutely. All attacks made against the target gain a +5 bonus to damage. This effect ends when the target is dead or the wielder of the weapon disengages from combat. Only one target can be designated for this vengeance at a time.

See the spell *litany of vengeance* in *Pathfinder Roleplaying Game Ultimate Combat*.

CONSTRUCTION

Requirements Craft Magic Arms and Armor, *litany of vengeance*; **Cost** 50,100 gp

KATAR OF THUNDER +4

Aura moderate evocation; **CL** 9th
Slot none; **Price** 64,150 gp; **Weight** 1 lbs.

DESCRIPTION

When this weapon strikes a target it booms as a clap of thunder. The target must make a DC 19 Fortitude save or be *deafened* and *confused* for one round.

See the spell *litany of thunder* in *Pathfinder Roleplaying Game Ultimate Combat*.

CONSTRUCTION

Requirements Craft Magic Arms and Armor, *litany of thunder*; **Cost** 32,075 gp

KAMA OF DEBILITATING PORTENT +4

Aura moderate enchantment; **CL** 9th
Slot none; **Price** 64,150 gp; **Weight** 2 lbs.

DESCRIPTION

When struck by this weapon, the target is surrounded by a green glow that lasts for 9 rounds. During that time, the target must make a DC 19 Will save whenever they make

an attack or cast a spell that does damage. If the save, they do damage as normal, but if they fail their attack only does ½ damage.

See the spell *debilitating portent* in *Pathfinder Roleplaying Game Ultimate Combat*.

CONSTRUCTION

Requirements Craft Magic Arms and Armor *debilitating portent*; **Cost** 32,075 gp

KUKRI OF TRACKING +3

Aura moderate divination; **CL** 11th
Slot none; **Price** 36,150 gp; **Weight** 2 lbs.

DESCRIPTION

By concentrating for one round, the wielder of this weapon can determine if a familiar, well-known creature is within a 20 mile radius, and in what direction.

See the spell *find quarry* in *Pathfinder Roleplaying Game Ultimate Combat*.

CONSTRUCTION

Requirements Craft Magic Arms and Armor, *find quarry*; **Cost** 18,075 gp

LANCE, TAR POOL +3

Aura moderate transmutation; **CL** 11th
Slot none; **Price** 36,160 gp; **Weight** 10 lbs.

DESCRIPTION

By touching the tip of this lance to the ground, a 20 radius area is transformed into hot tar. Creatures in that area take 5d6 points of fire damage. They must also make a DC 20 Reflex save or become entangled. A trapped creature takes an additional 2d6 points of damage per round.

See the spell *tar pool* in *Pathfinder Roleplaying Game Ultimate Combat*.

CONSTRUCTION

Requirements Craft Magic Arms and Armor, *tar pool*; **Cost** 18,080 gp

METEOR HAMMER OF HOSTILE LEVITATION +3

Aura moderate transmutation; **CL** 5th
Slot none; **Price** 36,160 gp; **Weight** 10 lbs.

DESCRIPTION

The meteor hammer is a much like the *kusari-fundo* consisting of one or two weighted heads connected by a rope or chain. Using a meteor hammer involves swinging it around your body to build up speed before releasing one of the heads to strike at your opponent.

Since this meteor hammer has two heads, one could be used offensively, and the other could be used for defense. When used in this fashion the double headed meteor hammer is a double weapon and offers a +1 dodge bonus to AC.

This meteor hammer can perform a *disarm*, *grapple*, or *trip* maneuver instead of attacking without incurring an attack of opportunity. A creature struck by this double-weighted weapon must make a DC 17 Will save or begin to levitate a few inches off the ground. This cuts movement by half and imposes a -4 penalty to CMD. Because the target is unstable, they also suffer a -2 penalty to attack rolls.

See the spell *hostile levitation* in *Pathfinder Roleplaying Game Ultimate Combat*.

CONSTRUCTION

Requirements Craft Magic Arms and Armor, *hostile levitation*; **Cost** 19,080 gp

MONK'S SPADE OF VENGEFUL FATE +5

Aura moderate evocation; **CL** 15th
Slot none; **Price** 100,170 gp; **Weight** 12 lbs.

DESCRIPTION

This monk's spade is a double weapon with a sharpened spade head on one end of the shaft and a crescent blade on the other.

A monk using this monk's spade fights with his unarmed base attack bonus, including his more favorable number of attacks per round, along with other applicable modifiers.

When struck by this weapon, the target is surrounded by a glowing red aura for 15 rounds. During that time, when the target tries to attack or cast a spell, they must make a DC 25 Fortitude save. If the save succeeds,

they take their action as normal. If they fail, they lose their action and take 4d6 points of electrical damage.

See the spell *jolting portent* in *Pathfinder Roleplaying Game Ultimate Combat*.

CONSTRUCTION

Requirements Craft Magic Arms and Armor, *jolting portent*; **Cost** 50,085 gp

NAGINATA OF IMMOLATION +2

Aura moderate evocation; **CL** 5th
Slot none; **Price** 16,185 gp; **Weight** 9 lbs.

DESCRIPTION

The naginata has reach. The character can strike opponents 10 feet away with it, but it cannot be used against an adjacent foe.

When struck by this weapon, the target bursts into flame and takes an additional 3d6 points of fire damage. For the following 4 rounds, the target takes 1d6 points of fire damage. Only one creature can be affected by this ability at a time.

See the spell *spontaneous immolation* in *Pathfinder Roleplaying Game Ultimate Combat*.

CONSTRUCTION

Requirements Craft Magic Arms and Armor, *spontaneous immolation*; **Cost** 8,095 gp

NINE-RING BROADSWORD OF TACTICAL ACUMEN +2

Aura moderate enchantment; **CL** 5th
Slot none; **Price** 16,165 gp; **Weight** 4 lbs.

DESCRIPTION

The nine-ring broadsword is a heavy chopping weapon with nine rings attached to the back edge. These rings serve a tactical purpose, and are not simply for decoration. During combat, the addition of the rings allows you to make a disarm attempt (as a free action).

This weapon grants an additional +1 insight bonus to attack rolls whenever the wielder is subject to an attack roll modifier in combat. This applies not only to positive modifiers, such as for flanking, but mitigates negative

modifiers for things like the wielder being prone or entangled.

See the spell *tactical acumen* in *Pathfinder Roleplaying Game Ultimate Combat*.

CONSTRUCTION

Requirements Craft Magic Arms and Armor, *tactical acumen*; **Cost** 8,080 gp

NUNCHAKU

OF MIRROR STRIKING +2

Aura moderate transmutation; **CL** 5th
Slot none; **Price** 16,150 gp; **Weight** 2 lbs.

DESCRIPTION

When the wielder of this weapon is flanked, attacks per round can be doubled and split between two of the flanking attackers. If both targets are hit, roll damage once and split it between the two; if only one target is struck, roll damage normally.

See the spell *mirror strike* in *Pathfinder Roleplaying Game Ultimate Combat*.

CONSTRUCTION

Requirements Craft Magic Arms and Armor, *mirror strike*; **Cost** 8,075 gp

SAI OF MADNESS +3

Aura moderate enchantment; **CL** 12th
Slot none; **Price** 36,150 gp; **Weight** 1 lbs.

DESCRIPTION

When struck by this weapon, the target must make a DC 22 Will save or become confused. The target can make this save once per round. Once the save is made, the effect ends.

See the spell *litany of madness* in *Pathfinder Roleplaying Game Ultimate Combat*.

CONSTRUCTION

Requirements Craft Magic Arms and Armor, *litany of madness*; **Cost** 18,075 gp

SAINGHAM, RICOCHETING +2

Aura moderate evocation; **CL** 5th
Slot none; **Price** 16,150 gp; **Weight** 1 lbs.

DESCRIPTION

This weapon allows the wielder to make multiple attacks very quickly. On a

successful hit with this weapon, the wielder can quickly withdraw and thrust again at an adjacent target. The base attack bonus for the second attack is the same, but does not benefit from any magical enhancements or other special qualities.

See the spell *ricochet shot* in *Pathfinder Roleplaying Game Ultimate Combat*.

CONSTRUCTION

Requirements Craft Magic Arms and Armor, *ricochet shot*; **Cost** 8,075 gp

SHURIKEN, FIERY +2

Aura moderate conjuration; **CL** 5th
Slot none; **Price** 16,150 gp; **Weight** --

DESCRIPTION

This shuriken bursts into flame when thrown, and does an additional 1d8 points of fire damage to a target on a successful to hit roll.

See the spell *fiery shuriken* in *Pathfinder Roleplaying Game Ultimate Combat*.

CONSTRUCTION

Requirements Craft Magic Arms and Armor, *fiery shuriken*; **Cost** 8,075 gp

TANTO

OF HOSTILE JUXTAPOSITION +3

Aura moderate conjuration; **CL** 9th
Slot none; **Price** 36,150 gp; **Weight** 1 lb.

DESCRIPTION

On a successful to hit roll, the wielder of this weapon can designate the target as the subject of its special ability. During combat, the wielder can then teleport and trade places with the target. This can be done to gain tactical advantage, or to place spells or attacks directed at the wielder onto the target. Once the teleport switch is made, this ability cannot be used again for the remainder of the combat.

See the spell *hostile juxtaposition* in *Pathfinder Roleplaying Game Ultimate Combat*.

CONSTRUCTION

Requirements Craft Magic Arms and Armor, *hostile juxtaposition*; **Cost** 18,075 gp

TETSUBO OF MOLTEN GLASS +3

Aura moderate transmutation; **CL** 7th
Slot none; **Price** 36,170 gp; **Weight** 10 lbs.
DESCRIPTION

This great club is constructed out of heavy wood, or made entirely from iron, with iron spikes or studs on one end. One or both ends of the wooden type clubs could be sheathed in iron.

This weapon can be used to strike the ground and turn a 20-foot radius area into molten glass. Those in the area must make a DC 17 Reflex check or take 3d6 points of fire damage and become entangled; if they make the save, they take half damage and are not entangled.

See the spell *obsidian flow* in *Pathfinder Roleplaying Game Ultimate Combat*.

CONSTRUCTION

Requirements Craft Magic Arms and Armor, *obsidian flow*; **Cost** 18,085 gp

TIGER FORK OF TWISTED SPACE +2

Aura moderate transmutation; **CL** 5th
Slot none; **Price** 16,150 gp; **Weight** 8 lbs.
DESCRIPTION

When using this tiger's fork, you may attempt a *disarm* maneuver without incurring an attack of opportunity.

The wielder of this weapon can choose to activate its power in lieu of making an attack. By spinning it about, the wielder creates distortions in space, making him immune to attacks; any attacks made against the wielder will strike a nearby random target instead.

See the spell *twisted space* in *Pathfinder Roleplaying Game Ultimate Combat*.

CONSTRUCTION

Requirements Craft Magic Arms and Armor, *twisted space*; **Cost** 8,075 gp

TONFA OF SPEED +2

Aura moderate transmutation; **CL** 9th
Slot none; **Price** 16,150 gp; **Weight** 1 lb.

DESCRIPTION

The tonfa or 'ratchet baton,' is a short club with a handle on the top. It is typically used in pairs. A monk using a tonfa fights with his unarmed base attack bonus, including his more favorable number of attacks per round, along with other applicable modifiers.

When fighting defensively while wielding this tonfa, the user gets an additional +1 dodge bonus for each tonfa wielded (to a maximum number of the number of arms that the defender has).

If the wielder's standard action in a combat round is a melee attack with this weapon, on their move action they gain a +20 bonus to speed (reduced to +10 if wearing Medium or Heavy armor) and do not provoke attacks of opportunity while moving.

See the spell *burst of speed* in *Pathfinder Roleplaying Game Ultimate Combat*.

CONSTRUCTION

Requirements Craft Magic Arms and Armor, *burst of speed*; **Cost** 8,075 gp

URUMI OF OPPORTUNITY +3

Aura moderate transmutation; **CL** --
Slot none; **Price** 36,170 gp; **Weight** 1 lb.

DESCRIPTION

Also known as a "coiled sword", this is a flexible weapon that can be curled around your waist and pulled out at a moment's notice.

The blade or blades are typically razor-sharp and bad news for anyone standing in the vicinity of the person wielding the coiled sword. If an enemy is looking for the coiled sword while worn as part of your clothes, the DC for Perception checks should be increased by +10.

The wielder of this urumi can make up to 2 additional attacks of opportunity per round. See the spell *litany of warding* in *Pathfinder Roleplaying Game Ultimate Combat*.

CONSTRUCTION

Requirements Craft Magic Arms and Armor, *litany of warding*; **Cost** 18,085 gp

WAKIZASHI, WARDING +2

Aura moderate abjuration; **CL** 5th

Slot none; **Price** 16,185 gp; **Weight** 2 lbs.

DESCRIPTION

The wakizashi is a masterwork sword that grants a +1 bonus on the attack rolls. A masterwork weapon's bonus to attack *does not* stack with an enhancement bonus to attack.

Typically the wakizashi is part of a matched set with a katana. For samurai, the pair (daisho) is an import part of their honor. Samurai rarely use the wakizashi in combat, except for those who have invested in the *two-weapon fighting* feat. Its most prominent use is in the ritual of suicide

(seppuku). Noble non-samurai may carry a wakizashi without a katana.

This particular wakizashi was created for use by noble spellcasters. Upon the utterance of a command word, this weapon floats above your head and automatically parries melee attacks made against you. Used this way, it is defensive only and cannot make attacks. It does free up the wielder to cast spells without the need to cast defensively or incur attacks of opportunity.

See the spell *warding weapon* in *Pathfinder Roleplaying Game Ultimate Combat*.

CONSTRUCTION

Requirements Craft Magic Arms and Armor, *warding weapon*; **Cost** 8,090 gp

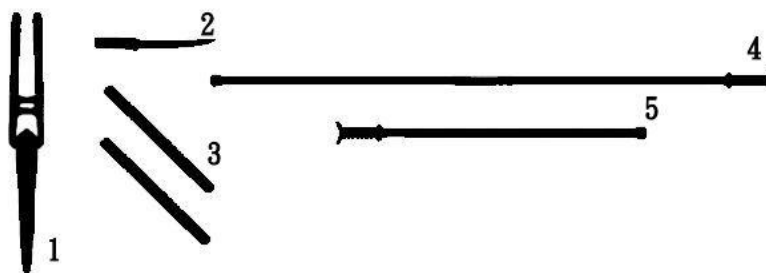
WEAPON STATISTICS

SIMPLE WEAPONS

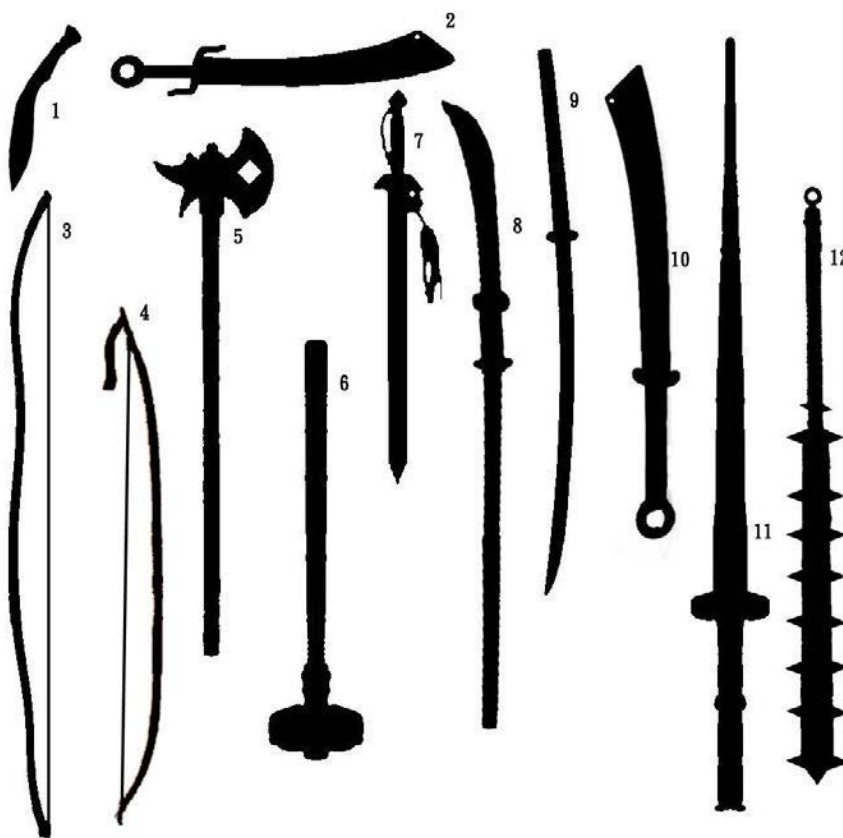
Light Melee Weapons	Cost	Dmg (S)	Dmg (M)	Critical	Range	Weight	Type	Special
Katar	2 gp	1d3	1d4	x3	--	1 lbs.	P	--
Tanto	2 gp	1d3	1d4	19-20/x2	10 ft.	1 lbs.	P or S	--
One-Handed Melee Weapons	Cost	Dmg (S)	Dmg (M)	Critical	Range	Weight	Type	Special
Fighting Sticks	--	1d4	1d6	x2	10 ft.	2 lbs.	B	monk
Ranged Weapons	Cost	Dmg (S)	Dmg (M)	Critical	Range	Weight	Type	Special
Needles (20)	1 gp	--	--	--	--	--	--	see text
Blowgun, Greater	5 gp	1d2	1d3	x2	10 ft.	4	P	--

MARTIAL WEAPONS

One-Handed Melee Weapons	Cost	Dmg (S)	Dmg (M)	Critical	Range	Weight	Type	Special
Dai Tsuchi	12 gp	1d6	1d8	x3	--	5 lbs.	B	--
Dao	15 gp	1d4	1d6	18-20/x2	--	4 lbs.	P or S	--
Jian	15 gp	1d6	1d8	x2	--	4 lbs.	S	monk
Two-Handed Melee Weapons	Cost	Dmg (S)	Dmg (M)	Critical	Range	Weight	Type	Special
Dadao	75 gp	1d6	2d4	18-20/x2	--	8 lbs.	S	--
Nagamaki	9 gp	1d6	2d4	x3	--	12 lbs.	P or S	brace, trip
Ono	20 gp	1d10	1d12	x3	--	12 lbs.	S	--
Tetsubo	5 gp	1d8	1d10	x2	--	8 lbs.	B	--
Ranged Weapons	Cost	Dmg (S)	Dmg (M)	Critical	Range	Weight	Type	Special
Daikyu	75 gp	1d6	1d8	x3	100 ft.	3 lbs.	P	see text
Yumi	100 gp	1d6	1d8	x3	150 ft.	3 lbs.	P	--



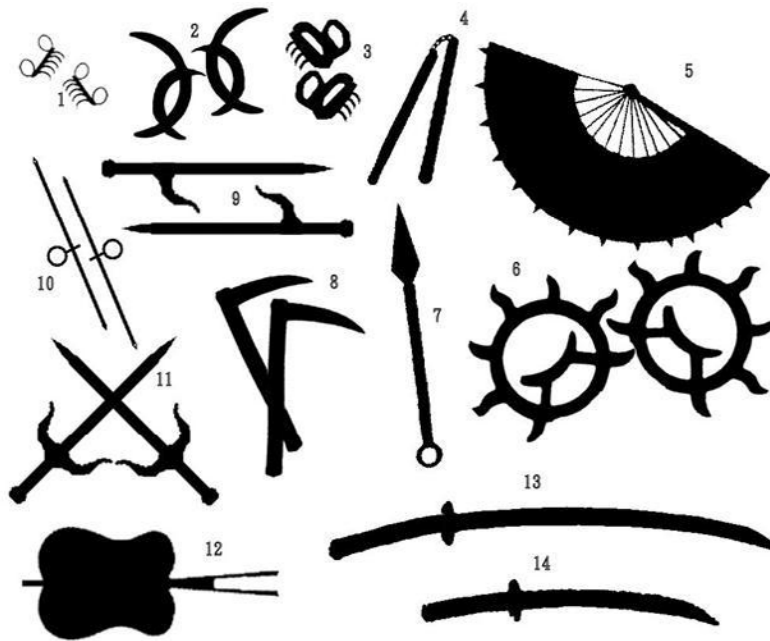
1. Katar; 2. Tanto; 3. Fighting Sticks; 4. Blowgun (Greater); 5 Blowgun



1. Kukri; 2. Dao; 3. Yumi; 4. Daikyu; 5. Ono; 6. Dai Tsuchi;
7. Jian; 8. Nagamaki; 9. Naginata; 10. Dadao; 11. Lance; 12. Tetsubo

EXOTIC WEAPONS								
Unarmed Attacks	Cost	Dmg (S)	Dmg (M)	Critical	Range	Weight	Type	Special
Darts, Fukimi-Bari	1	1d2	x2	--	--	--	P	see text
Light Melee Weapons	Cost	Dmg (S)	Dmg (M)	Critical	Range	Weight	Type	Special
Bagh nakh (Tiger Claws)	8 gp	1d4	1d6	x2	--	3 lbs.	P or S	monk
Deer Horn Knives	3 gp	1d3	1d4	x2	--	1 lbs.	P or S	monk
Nekode	5 gp	1d3	1d4	x2	--	2 lbs.	P	monk
Tessen	30 gp	1d4	1d6	x2	--	1 lbs.	B	see text
Wind and Fire Wheels	50 gp	1d4	1d6	x2	10 ft.	2 lbs.	P or S	disarm, monk

One-Handed Melee Weapons	Cost	Dmg (S)	Dmg (M)	Critical	Range	Weight	Type	Special
Ninja-To	200 gp	1d4	1d6	19-20/x2	--	4 lbs.	P or S	see text
Pata	20 gp	1d4	1d6	18-20/x2	--	2 lbs.	P	--
Shikomi-Zue	100 gp	1d4	1d6	x2	20 ft.	3 lbs.	B or P	see text
Tiger Hook Sword	15 gp	1d6	1d8	x3	--	4 lbs.	S or P	double, trip, see text
Two-Handed Melee Weapons	Cost	Dmg (S)	Dmg (M)	Critical	Range	Weight	Type	Special
Chigiriki	8 gp	1d4/1d3	1d6/1d4 x2	--	6 lbs.	B or P	double, trip	
Kawanga	10 gp	1d2/1d2	1d3/1d3 x2	--	3 lbs.	B or S	double or reach, disarm, trip	
Kusari-Fundo	5 gp	1d4/1d4	1d6/1d6 x2	--	5 lbs.	B	double, disarm, trip	
Kusari-Gama	10 gp	1d4/1d3	1d6/1d4 x2	--	3 lbs.	B or S	double or reach, disarm, trip	
Lajatang	90 gp	1d6/1d6	1d8/1d8 x2	--	7 lbs.	S	double, monk, trip	
Qiang	15 gp	1d6	1d8 x3	20 ft.	6 lbs.	S or P	brace, see text	
Sang Kauw	95 gp	1d6/1d6	1d8/1d8 x3	--	10 lbs.	P	double	
Sasumata	8 gp	1d3	1d4 x2	--	8 lbs.	B	grapple, reach	
Sodegarami	4 gp	1d3	1d4 x2	--	5 lbs.	B	grapple, reach	
Three-Section Staff	10 gp	1d4/1d4	1d6/1d6 x2	--	6 lbs.	B	double, monk, trip	
Yari	15 gp	1d6	1d8 x3	20 ft.	6 lbs.	S or P	brace	
Ranged Weapons	Cost	Dmg (S)	Dmg (M)	Critical	Range	Weight	Type	Special
Chakram	15 gp	1d4	1d6	18-20/x2	30 ft.	2 lbs.	S	monk
Throwing Spike (3)	5 gp	1d3	1d4 x2	20 ft.	.5 lbs.	P		



1. Bagh nakh; 2. Deer Horn Knives; 3. Nekode; 4. Nunchaku; 5. War Fan; 6. Wind and Fire Knives; 7. Siangham; 8. Kama; 9. Jutte; 10. Emei Daggers; 11. Sai; 12. Tessen; 13. Katana; 14. Wakizashi

OPEN GAME LICENSE VERSION 1.0A

The following text is the property of Wizards of the Coast, Inc. and is Copyright 2000 Wizards of the Coast, Inc ("Wizards"). All Rights Reserved.

1. Definitions: (a) "Contributors" means the copyright and/or trademark owners who have contributed Open Game Content; (b) "Derivative Material" means copyrighted material including derivative works and translations (including into other computer languages), potation, modification, correction, addition, extension, upgrade, improvement, compilation, abridgment or other form in which an existing work may be recast, transformed or adapted; (c) "Distribute" means to reproduce, license, rent, lease, sell, broadcast, publicly display, transmit or otherwise distribute; (d) "Open Game Content" means the game mechanic and includes the methods, procedures, processes and routines to the extent such content does not embody the Product Identity and is an enhancement over the prior art and any additional content clearly identified as Open Game Content by the Contributor, and means any work covered by this License, including translations and derivative works under copyright law, but specifically excludes Product Identity. (e) "Product Identity" means product and product line names, logos and identifying marks including trade dress; artifacts; creatures characters; stories, storylines, plots, thematic elements, dialogue, incidents, language, artwork, symbols, designs, depictions, likenesses, formats, poses, concepts, themes and graphic, photographic and other visual or audio representations; names and descriptions of characters, spells, enchantments, personalities, teams, personas, likenesses and special abilities; places, locations, environments, creatures, equipment, magical or supernatural abilities or effects, logos, symbols, or graphic designs; and any other trademark or registered trademark clearly identified as Product identity by the owner of the Product Identity, and which specifically excludes the Open Game Content; (f) "Trademark" means the logos, names, mark, sign, motto, designs that are used by a Contributor to identify itself or its products or the associated products contributed to the Open Game License by the Contributor (g) "Use", "Used" or "Using" means to use, Distribute, copy, edit, format, modify, translate and otherwise create Derivative Material of Open Game Content. (h) "You" or "Your" means the licensee in terms of this agreement.

2. The License: This License applies to any Open Game Content that contains a notice indicating that the Open Game Content may only be Used under and in terms of this License. You must affix such a notice to any Open Game Content that you Use. No terms may be added to or subtracted from this License except as described by the License itself. No other terms or conditions may be applied to any Open Game Content distributed using this License.

3. Offer and Acceptance: By Using the Open Game Content You indicate Your acceptance of the terms of this License.

4. Grant and Consideration: In consideration for agreeing to use this License, the Contributors grant You a perpetual, worldwide, royalty-free, non-exclusive license with the exact terms of this License to Use, the Open Game Content.

5. Representation of Authority to Contribute: If You are contributing original material as Open Game Content, You represent that Your Contributions are Your original creation and/or You have sufficient rights to grant the rights conveyed by this License.

6. Notice of License Copyright: You must update the COPYRIGHT NOTICE portion of this License to include the exact text of the COPYRIGHT NOTICE of any Open Game Content You are copying, modifying or distributing, and You must add the title, the copyright date, and the copyright holder's name to the COPYRIGHT NOTICE of any original Open Game Content you Distribute.

7. Use of Product Identity: You agree not to Use any Product Identity, including as an indication as to compatibility, except as expressly licensed in another, independent Agreement with the owner of each element of that Product Identity. You agree not to indicate compatibility or co-adaptability with any Trademark or Registered Trademark in conjunction with a work containing Open Game Content except as expressly licensed in another, independent Agreement with the owner of such Trademark or Registered Trademark. The use of any Product Identity in Open Game Content does not constitute a challenge to the ownership of that Product Identity. The owner of any Product Identity used in Open Game Content shall retain all rights, title and interest in and to that Product Identity.

8. Identification: If you distribute Open Game Content You must clearly indicate which portions of the work that you are distributing are Open Game Content.

All proper names, logos, company names, images, graphics, are product identity. All other content is open gaming content.

9. Updating the License: Wizards or its designated Agents may publish updated versions of this License. You may use any authorized version of this License to copy, modify and distribute any Open Game Content originally distributed under any version of this License.

10. Copy of this License: You MUST include a copy of this License with every copy of the Open Game Content You Distribute.

11. Use of Contributor Credits: You may not market or advertise the Open Game Content using the name of any Contributor unless You have written permission from the Contributor to do so.

12. Inability to Comply: If it is impossible for You to comply with any of the terms of this License with respect to some or all of the Open Game Content due to statute, judicial order, or governmental regulation then You may not Use any Open Game Material so affected.

13. Termination: This License will terminate automatically if You fail to comply with all terms herein and fail to cure such breach within 30 days of becoming aware of the breach. All sublicenses shall survive the termination of this License.

14. Reformation: If any provision of this License is held to be unenforceable, such provision shall be reformed only to the extent necessary to make it enforceable.

15 COPYRIGHT NOTICE

Open Game License v 1.0a Copyright 2000, Wizards of the Coast, Inc.

System Reference Document. Copyright 2000, Wizards of the Coast, Inc.; Authors Jonathan Tweet, Monte Cook, Skip Williams, based on material by E. Gary Gygax and Dave Arneson.

Pathfinder RPG Core Rulebook. Copyright 2009, Paizo Publishing, LLC; Author: Jason Bulmahn, based on material by Jonathan Tweet, Monte Cook, and Skip Williams.

The Book of Experimental Might. Copyright 2008, Monte J. Cook. All rights reserved.

Tome of Horrors. Copyright 2002, Necromancer Games, Inc.; Authors: Scott Greene, with Clark Peterson, Erica Balsley, Kevin Baase, Casey Christofferson, Lance Hawvermale, Travis Hawvermale, Patrick Lawinger, and Bill Webb; Based on original content from TSR.

Pathfinder Roleplaying Game Ultimate Combat. © 2011, Paizo Publishing, LLC; Authors: Jason Bulmahn, Tim Hitchcock, Colin McComb, Rob McCreary, Jason Nelson, Stephen Radney-MacFarland, Sean K Reynolds, Owen K.C. Stephens, and Russ Taylor.

Missing Magic: Eastern Weapons copyright 2012 Gary Weller and Berin Kinsman; Authors: Gary Weller and Berin Kinsman

ASPARAGUS JUMPSUIT™ is Berin Kinsman and Katie Kinsman. Visit us at asparagusjumpsuit.com.

MISSING MAGIC: EASTERN WEAPONS™ writer and illustrated by Gary Weller, with additional material by Berin Kinsman. © Copyright 2013 Gary Weller & Berin Kinsman. All rights reserved. This is version 2.0 of this document, released on June 19, 2013.