

# PanzerBlitz

## Situation # PS-1

SUOMUSSALMI (12/11/39). Elements of the Finnish 27th Infantry Regiment attack units of the Soviet 163rd Rifle Division as they attempt to evacuate to the east.

SPECIAL RULES : Winter Movement is in effect.

Map Configuration

7	3	1
---	---	---



### FINNISH FORCES



Elements of the Finnish 27th Infantry Regiment. Set up second on Board 1.

1 8 SKI	2 3 SSSS SKI	2 4 M-G	4 1 37 mm	5 2 37 mm	8 12 40 mm	3 12 81/82 mm	0 0 Sled
x16	x10	x9	x2	x2	x2	x12	

2 2 Aeron
-----------------

x2

#### VICTORY CONDITIONS:

Marginal = Destroy 14 Russian units.

Tactical = Destroy 17 Russian units.

Decisive = Destroy 20 Russian units.



### RUSSIAN FORCES



Elements of the Soviet 163rd Rifle Division (662nd Rifle Regiment, 759th Rifle Regiment, 86th Artillery Regiment, 203rd Anti-Tank Battalion, 222nd Tank Battalion, 163rd Reconnaissance Battalion). Set up first on Boards 2 and 3.

6 7 T-28 E	2 4 T-28 A	2 6 T-28 B	5 8 RIFLE	3 4 SKI	3 4 RECON	6 1 12.7 mm	6 0 45 mm	5 3 A
x2	x2	x2	x11	x8	x5		x2	

12 2 76.2 mm	5 0 76.2 mm	3 1 122 mm	10 0 82 mm	40 3 M	20 1 Sled	0 1 C	0 1 C	0 1 C	0 1 C	0 1 C	0 1 C	0 1 C	0 1 C	0 1 C
x2		x5	x2	x8	x9									

#### VICTORY CONDITIONS:

Marginal = Evacuate 10 units off Eastern Edge of the board.

Tactical = Evacuate 15 units off Eastern Edge of the board.

Decisive = Evacuate 20 units off Eastern Edge of the board.

Fin moves first	1	2	3	4	5	6	7	8	9	10	11	12	13	14	15	16	END
--------------------	---	---	---	---	---	---	---	---	---	----	----	----	----	----	----	----	-----

# PanzerBlitz

## Situation # PS-2

TOLVAJARVI (12/12/39). Elements of the Russian 139th Rifle Division find themselves surrounded by the Finnish 16th Infantry Regiment and desperately try to break out to the east before the Finns destroy them.

SPECIAL RULES : Winter Movement is in effect.

Map Configuration

3	1	7
---	---	---



### FINNISH FORCES



Elements of the Finnish 16th Infantry Regiment (reinforced). Set up second on Boards 2 and 3.

1 8 SKI	2 3 SSSS SKI	2 4 M-G	3 1 37 mm	5 2 37 mm	20 28 75 mm	0 0 Sled
x16	x24	x12	x3		x3	

#### VICTORY CONDITIONS:

Marginal = Destroy 15 Russian units.

Tactical = Destroy 20 Russian units.

Decisive = Destroy 35 Russian units.



### RUSSIAN FORCES



Elements of the Soviet 139th Rifle Division (364th Rifle Regiment, 609th Rifle Regiment, 169th Tank Battalion, 139th Reconnaissance Battalion). Set up first on Board 1.

6 7 T-28 E	2 4 T-28 A	2 6 T-28 B	3 8 RIFLE	3 4 SKI	3 4 RECON	6 1 12.7 mm	5 2 37 mm	0 0 Wagon
x2	x2	x12	x8	x5	x2	x2	x8	

0 1 C	0 1 C	0 1 C	0 1 C
-------------	-------------	-------------	-------------

x12 x2

#### VICTORY CONDITIONS:

Marginal = Evacuate 10 units off Eastern Edge of the board.

Tactical = Evacuate 20 units off Eastern Edge of the board.

Decisive = Evacuate 25 units off Eastern Edge of the board.

Fin moves first	1	2	3	4	5	6	7	8	9	10	11	12	13	14	END
--------------------	---	---	---	---	---	---	---	---	---	----	----	----	----	----	-----

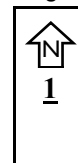
# PanzerBlitz

## Situation # PS-3

SAIJA (12/13/39). Finish frontier troops move to block Russian units attempting to encircle the port of Petsamo in the far northern Arctic regions of Finland.

SPECIAL RULES : Winter Movement is in effect. Also, the hexes of the town of Adski are presumed to be Woods hexes for this scenario.

Map Configuration



### RUSSIAN FORCES



Elements of the Russian 112th Rifle Division. Enter along the northern edge of the board on Turn 1.

3 I 4	3 I 2	3 M 12	20 H 16	0 C 0	2 C(I) 2	0 C 0	0 C 0
4 SKI 3	8 1	82 mm	76.2 mm	1 Sled 3	2 ML-4 17	2 ML-4 17	1 Truck 12
x6	x2	x2		x2	x2	x2	

#### VICTORY CONDITIONS:

Russians win if they control all the hexes of the town of Uschas (Saija) at the end of the game.



### FINNISH FORCES



Elements of Detachment Pennanen. Enter along the southern edge of the board on Turn 1.

2 I 2	2 I 4	3 M 12	0 C 0	2 C(I) 2
8 SSSU SKI 3	4 M-6 1	81/82 mm	1 Sled 3	2 Aeroson 12
x9	x3		x2	x2

#### VICTORY CONDITIONS:

Finns win if they prevent the Russian victory conditions.

Rus moves first									END		
Turn 1	2	3	4	5	6	7	8	9	10		

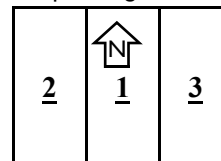
# PanzerBlitz

## Situation # PS-4

SUMMA (2/1/40). Russian units assault a section of the Mannerheim Line defended by the Finns.

SPECIAL RULES : Winter Movement is in effect. Units inside forts are secretly placed by the Finnish player during setup (blank units are used as dummies). Individual units that fire from a fort are revealed when they first fire. When a fort is close assaulted or dispersed, reveal all counters within and discard the blanks.

Map Configuration



### RUSSIAN FORCES



Elements of the Soviet 100th Rifle Division, supported by the 13th and 20th Tank Brigades. Enter anywhere along the eastern edge of the board on Turn 1.

6 H 6	10 H 6	50 H 10	2 I 2	5 A 3	5 A 3	3 I 4	4 I 1
7 T-28 E 10	9 T-35 6	10 KV-II 8	4 T-26 A 6	4 T-26 B 6	5 BT-5 13	1 RIFLE 1	6 SMG 1
x3		x2	x2	x6	x4	x6	x6
3 I 4	3 I 1	3 M 12	24 M 20	40 H 20	60 H 25	80 H 30	0 C 0
4 SKI 3	4 RECON 1	82 mm	120 mm	122 mm	152 mm	203 mm	1 Truck 12
x8	x5	x4	x2	x2	x2		x14

#### VICTORY CONDITIONS:

Marginal = Destroy 10 Finnish units.

Tactical = Destroy 15 Finnish units.

Decisive = Establish a corridor four hexes wide, free of Finnish units, from the east side to the west side of the board by the end of the game.



### FINNISH FORCES



Elements of the Finnish 7th Infantry Regiment. Set up on Boards 1 and 2.

1 I 2	2 I 4	3 I 1	5 A 2	8 H 12	20 H 28	40 H 32	0 - 0
8 RIFLE 1	4 M-6 1	4 37 mm	1 3	40 mm	75 mm	105 mm	1 CP 0
x16	x6	x3	x2	x2	x3		
3 A 2	40	30	20	X	MINES 2-1	Blank Counters	
4 FT 17 2	x4	x4	x6	x6	x6	x8	

#### VICTORY CONDITIONS:

Marginal = Destroy 10 Russian units.

Tactical = Destroy 15 Russian units.

Decisive = Destroy 20 Russian units.

Rus moves first											END
Turn 1	2	3	4	5	6	7	8	9	10	11	12

Rus moves first Turn <b>1</b>	<b>2</b>	<b>3</b>	<b>4</b>	<b>5</b>	<b>6</b>	<b>7</b>	<b>8</b>	<b>9</b>	<b>10</b>	<b>11</b>	<b>12</b>	<b>13</b>	<b>14</b>	<b>15</b>	<b>16</b>
--	----------	----------	----------	----------	----------	----------	----------	----------	-----------	-----------	-----------	-----------	-----------	-----------	-----------

# PanzerBlitz

## Situation # PS-7

KARKUMAKI (12/6/41). Units of the Finnish army have pushed deep into East Karelia and have come up against strong Russian forces near Karkumaki.

SPECIAL RULES : Winter Movement is in effect.

Map Configuration

€	↑ 2	1
---	--------	---



### FINNISH FORCES



Units of the Finnish 1st Jaeger Brigade, including the Finnish Tank Battalion, and supported by the 11th, 12th, and 15th Artillery Battalions. Enter along the western edge of the board on Turn 1.

6 H 6	5 A 3	5 A 3	5 A 3	2 I 3	3 I 3	2 I 4	4 I 1
7 T-28 E	5 T-26 C	5 T-26 E	5 BT-5	5 T-38	5 S	4 M-6	4 M-6
x4	x5	x2	x18	x6	x3		

5 A 3	6 A 3	12 A 6	20 H 24	36 H 20	0 C 0	2 C(I) 2
3 45 mm	3 47 mm	2 76.2 mm	2 76.2 mm	2 4.5 inch	1 Sd	2 Asem
x2	x4	x2	x10	x6		

#### VICTORY CONDITIONS:

Marginal = Destroy 15 Russian units.

Tactical = Destroy 15 Russian units and control all of Hill 132 at the end of the game.

Decisive = Destroy 25 Russian units and control all of Hill 132.



### RUSSIAN FORCES



Elements of the Soviet 71st Rifle Division (126th Rifle Regiment, 2nd Ski Brigade, 86th Artillery Regiment, 467th Anti-Tank Battalion, 548th Heavy Mortar Battalion) and the 124th Tank Battalion. Set up on Boards 1 and 2.

2 I 2	5 A 3	3 I 4	6 I 4	4 I 4	3 I 1	5 A 3	12 A 5
3 T-40	7 T-50	11 RIFLE	10 SNG	12 SNG	4 RECON	3 45 mm	2 76.2 mm
x2	x3	x6	x4	x6	x5	x5	x2

24 M 20	0 C 0	0 C 0	0 C 0	2 C(I) 2	2 I 2
2 120 mm	1 Wagon	3 MCL-4	17 MCL-10	4 MCL-26	4 BT-5
x2	x8	x4	x2	x2	x2

#### VICTORY CONDITIONS:

Marginal = Destroy 10 Finish units.

Tactical = Destroy 15 Finish units.

Decisive = Destroy 25 Finish units.

Fin moves first														END
Turn 1	2	3	4	5	6	7	8	9	10	11	12	13	14	

# PanzerBlitz

## Situation # PS-8

OSINOVETS (7/17/42). Hypothetical attack by the Finnish Tank Division and Cavalry Brigade on the supply center located in Osinovets which is defended by a Russian rifle division.

SPECIAL RULES : Forts may not be set up in Town hexes.

Map Configuration

1	↑ 3	2
---	--------	---



### FINNISH FORCES



Elements of the Finnish Tank Division and Cavalry Brigade. Enter anywhere along the western edge of the board on Turn 1.

6 H 6	5 A 3	5 A 3	2 I 3	10 H 8	3 I 4	2 I 4	4 I 1
7 T-28 E	5 T-26 C	5 T-26 E	5 T-38	5 BT-42	5 S	4 M-6	4 M-6
x7	x5	x2	x2	x10	x5		

3 I 2	0	3 M 12	20 H 28	40 H 32	60 H 36	80 H 36	0 C 0
2 Cavalry	1 CP	3 81/82 mm	2 75 mm	2 105 mm	2 150 mm	2 3 inch	1 Sd
x12	x2	x2	x2	x2			x2

0 C 0	0 C 0
1 Truck	12 Linder
x10	x4

#### VICTORY CONDITIONS:

Marginal = Control the town of Zabvenia at the end of the game.

Tactical = Destroy two forts and control Zabvenia.

Decisive = Destroy all four forts and control Zabvenia.



### RUSSIAN FORCES



Elements of the Russian 21st Rifle Division (116th Rifle Regiment, 172nd Anti-Tank Battalion, 341st Light Tank Battalion). Set up on Board 3.

2 A 3	4 I 4	5 A 3	12 A 5	3 M 12	24 M 20	0 CP	0 C 0
6 T-40	12 RIFLE	3 45 mm	2 76.2 mm	3 82 mm	2 120 mm	1 CP	1 T-35-42
x6	x2	x2					x2

50	MINES 2-1	X
x4	x3	x3

#### VICTORY CONDITIONS:

Marginal = Control the town of Zabvenia at the end of the game.

Tactical = Destroy 10 Finnish units and control Zabvenia.

Decisive = Destroy 15 Finnish units and control Zabvenia.

Fin moves first																END
Turn 1	2	3	4	5	6	7	8	9	10	11	12	13	14	15	16	

SPECIAL RULES : None

## Map Configuration

Rus moves first Turn <b>1</b>	<b>2</b>	<b>3</b>	<b>4</b>	<b>5</b>	<b>6</b>	<b>7</b>	<b>8</b>	<b>9</b>	<b>END</b> <b>10</b>		
--	----------	----------	----------	----------	----------	----------	----------	----------	-------------------------	--	--