

# CHOPPERBLITZ

## Situation #4



GERMAN ARMORED ASSAULT (KURSK CAMPAIGN). NORTHERN PINCER (12/7/43). The weak pincer ran into trouble and called for the airmobile troops to dig out the AT guns.

### RUSSIAN FORCES

On Board 1:

7 A 3 3 13 0	12 A 5 2 36 0	X
-----------------	------------------	---

4 6 4

On Board Two, cannot enter Board Three until Germans do:

12 A 6 9 933 11	12 A 5 9 812 9	14 A 8 12 821 11	40 H 10 16 742 7
--------------------	-------------------	---------------------	---------------------

12 2 2 2

5 I 4 16 146 1	8 I 1 12 181 1	0 C 0 1 427 12	2 M 12 3 82 1
-------------------	-------------------	-------------------	------------------

9 3 8 2

#### VICTORY CONDITIONS:

Marginal: Have six units left on Board Three. Substantive: Have 10 units left. Decisive: Have 20 units left.

### GERMAN FORCES

Enter north side of Board One:

12 A 8 12 871 8	15 A 12 12 872 8	16 A 12 12 954 10	14 A 8 8 956 8
--------------------	---------------------	----------------------	-------------------

3 1 4 12

40 H 32 5 622 8	20 A 20 6 850 8	2 C(I) 4 4 445 10	0 C 0 1 424 12	3 I 6 8 146 1
--------------------	--------------------	----------------------	-------------------	------------------

2 1 1 3 12

3 M 12 3 81 1	13 A 6 2 37 0	6 I 3 6 183 1	0 C 0 5 20 8	14 A 5 8 20 8
------------------	------------------	------------------	-----------------	------------------

2 3 6 9 6

#### VICTORY CONDITIONS:

Marginal: Destroy 15 Russian units. Substantive: Destroy 20 units. Decisive: Destroy 40 units.

## Situation #5



RUSSIAN OFFENSIVE (August, 1943). To delay the Russian counterattacks after Kursk, it was necessary for the Germans to rely upon fast recon units and helicopters.

Rus moves first  
Turn 10

### RUSSIAN FORCES

Russians enter on south edge of Board Two.

12 A 6 9 933 11	15 A 8 10 795 11	14 A 8 12 822 11	8 I 1 12 183 1	5 I 4 16 143 1
--------------------	---------------------	---------------------	-------------------	-------------------

8 4 2 3 3

6 I 6 2 127 0	3 M 12 3 80 1	7 A 3 3 13 0	2 C(I) 1 2 442 10	0 C 0 1 428 12
------------------	------------------	-----------------	----------------------	-------------------

2 2 3 17 4

#### VICTORY CONDITIONS:

Destroy 8 or more German units for Marginal. Substantive: Destroy 15 or more. Decisive: Destroy 20 or more.

### GERMAN FORCES

Germans set up on Board Two or Three.

14 A 5 8 20 8	12 A 8 12 871 8	2 C(I) 4 4 445 10	2 H 4 3 531 16
------------------	--------------------	----------------------	-------------------

9 2 6 1

40 H 32 5 621 8	20 A 20 1 41 0	0 C 0 1 427 12	3 I 6 8 141 1	3 M 12 3 83 1
--------------------	-------------------	-------------------	------------------	------------------

1 1 2 3 1

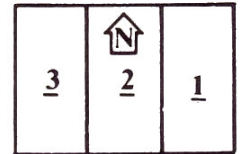
#### VICTORY CONDITIONS:

Marginal: 25 or fewer Russian units on Board Three. Substantive: 15 or fewer. Decisive: 10 or less.

## Situation #6

RESCUE MISSION (September, 1943). A German infantry force was trapped on a small hill behind Russian lines. A Helicopter force was sent to bring them out.

Rus moves first  
Turn 8



### RUSSIAN FORCES

Enter Turn One on east edge:

12 A 6 9 933 11	8 I 1 12 185 1	2 C(I) 1 2 441 10	0 C 0 1 423 12	6 I 6 2 127 0
--------------------	-------------------	----------------------	-------------------	------------------

6 6 3 2 2

Enter Turn One on north edge:

5 I 4 16 143 1	2 C(I) 1 2 445 10	0 C 0 1 433 12	3 I 1 4 136 1
-------------------	----------------------	-------------------	------------------

2 1 4 3

Enter Turn Two on south edge:

6 I 5 18 165 1	0 C 0 1 428 12
-------------------	-------------------

6 6

#### VICTORY CONDITIONS:

Decisive: Destroy 20 German units. Substantive: Destroy 15. Marginal: Destroy 10.

### GERMAN FORCES

Set up on Hill 132:

3 I 6 8 146 1	3 M 12 3 83 1	0 C 0 1 417 3	6 I 3 6 181 1
------------------	------------------	------------------	------------------

15 2 4 4

Enter Turn Three on west edge:

0 C 0 5 20 8
-----------------

18

#### VICTORY CONDITIONS:

Decisive: Exit 15 Infantry units off west edge. Substantive: Exit 10. Marginal: Exit 6.