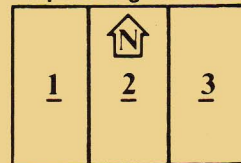


PanzerBlitz Situation #9

RUSSIAN MOBILE ASSAULT ON GERMAN BLOCKING FORCE:
RUSSIAN DRIVE ON STALINO (19/8/43). When Russian forces
had penetrated the German front it was often necessary to use an
infantry blocking force to prevent other infantry units from being
trapped.

Map Configuration



RUSSIAN FORCES



4th Guards Mechanized Corps. Enters on east edge of No. 3 board.

6 I 5 18 GUARDS 702 1	8 I 1 12 SMC 181 1	7 A 3 45 11 0	12 A 5 76 2 mm 2 33 0	3 M 12 82 86 1	2 M 12 82 82 1	24 M 20 120 92 0	3 I 1 4 RECON 132 1
x9	x3	x3	x3	x3	x3	x3	x3

6 I 6 12 7 mm 2 2 0	3 I 2 8 111 1	12 A 6 9 34 C 932 11	12 A 5 9 811 9	40 H 10 16 SU 152 742 7	0 C 0 1 TRUCK 424 12	2 C(I) 1 2 HALF TRK 442 10
x2	x4	x2	x2	x17	x6	

VICTORY CONDITIONS:

Marginal = destroy 10 German units. Tactical = destroy 20 German
units. Decisive = destroy 25. All remaining Russian units must leave
through the west edge of the No. 1 board by the end of the game or
else they are considered lost.



GERMAN FORCES



514th Infantry Regiment of the 294th Infantry Division. Sets up on
the No. 2 board.

3 I 6 8 RIFLE 144 1	6 M 12 81 83 1	2 H 12 75 62 0	20 H 12 150 71 2	13 A 6 75 32 0	15 M 20 120 92 0	0 C 0 1 TRUCK 127 12	0 C 0 1 WAGON 111 3
x14	x2	x2	x2	x2	x2	x3	x3

X x6	PAINT 2-1 x3	3 I 4 10 113 1 x2
---------	--------------------	----------------------------

VICTORY CONDITIONS:

Marginal = destroy 10 Russian units. Tactical = destroy 20 units.
Decisive = destroy 40.

Rus
moves first
Turn

1

2

3

4

5

6

7

8

9

END
10