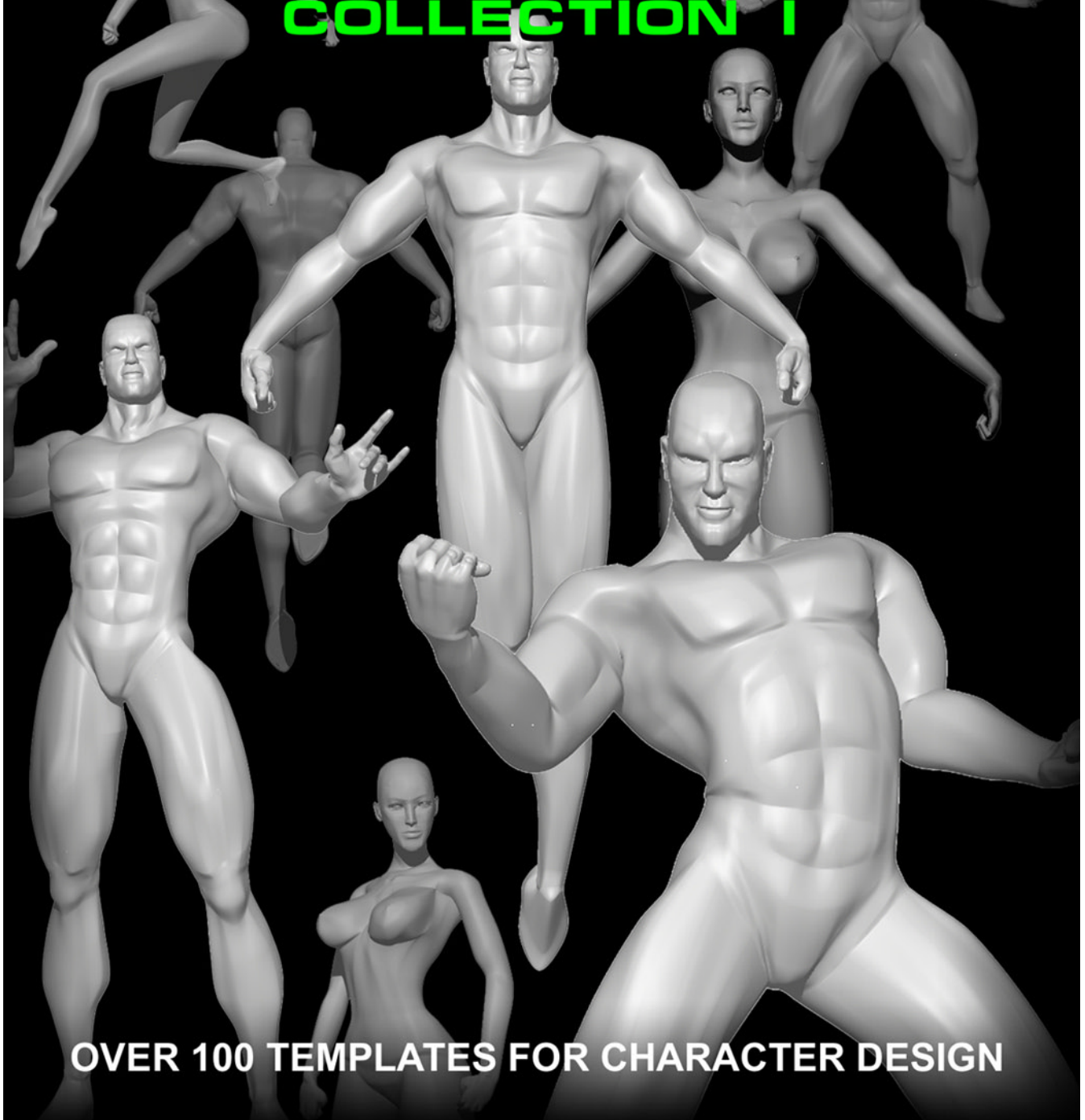




HERO GAMES

Presents

CHARACTER TEMPLATES COLLECTION I



OVER 100 TEMPLATES FOR CHARACTER DESIGN

HERO GAMES *Presents*

CHARACTER TEMPLATES COLLECTION I

A collection of High-Resolution 3D Models presented for use as Templates for all Super-Hero Character Design. Print them out on your own B&W printer and use them as a basis for your own artistic gaming needs. A great utility for RPG gamers of all varieties.



INDEX OF POSES

Ultra Muscled Male

4-5	Classic - hands on hips
6-7	Combat 1
8-9	“bring it on”
10-11	“calling down thunder”
12-13	casual
14-15	omnipotent
16-17	aggressive stance
18-19	“head on”
20-21	“attitude”
22-23	Combat 2
24-25	Mage 1
26-27	Energy Projector / Flyer 1
28-29	“Powerhouse”

Heroic Male

30-31	Classic - hands on hips
32-33	Combat 1
34-35	“bring it on”
36-37	“calling down thunder”
38-39	casual
40-41	omnipotent
42-43	aggressive stance
44-45	“head on”
46-47	“attitude”
48-49	Combat 2
50-51	Mage 1
52-53	Energy Projector / Flyer 1
54-55	“Powerhouse”

Ultra Voluptuous Female

56-57	Energy Projector / Flyer 1
58-59	Energy Projector / Flyer 2
60-61	Energy Projector / Flyer 3
62-63	“calling the elements”
64-65	Combat “pose”
66-67	“calling down thunder”
68-69	“ready for action”
70-71	“Powerhouse”
72-73	“attitude”
74-75	“omnipotent”
76-77	“Hero Pose”
78-79	Mage 1
80-81	aggressive stance
82-83	Mage 2
84-85	“head on”

Heroic Female

86-87	Energy Projector / Flyer 1
88-89	Energy Projector / Flyer 2
90-91	Energy Projector / Flyer 3
92-93	“calling the elements”
94-95	Combat “pose”
96-97	“calling down thunder”
98-99	“ready for action”
100-101	“Powerhouse”
102-103	“attitude”
104-105	“omnipotent”
106-107	“Hero Pose”
108-109	Mage 1
110-111	aggressive stance
112-113	Mage 2
114-115	“head on”
116	































































































































































































































NOTES:

On the Presentation of Hero Games' Character Templates Collection I:

The 3D models have been presented with the intention of being used as design aids for character creation. To make them a useful gamer's utility, we have formatted them in a "lightened" print style - so that they may be easily drawn over, but still clearly visible enough to be helpful to the non-artist, aspiring artist or designer who just wants a "helping hand", but lacks high end art programs or a 3D modeling device. If you need them darker or lighter, it may be easily done within any art editing software by increasing or decreasing the brightness and/or contrast levels.

The models and images contained herein are the property of, and are copyright 2001 Hero Games. They are not to be used for any professional production or redistributed without written permission of Hero Games.

For more information on our products, please visit us at www.herogames.com



CYBERGAMES.COM