

Plate One



Key to Archetype Portraits:

Page 1: Top Row: Kénesh hiPagásu and Mápi hiTókolu in everyday wear. Oródai hiSayúncha (#3) and Tékar hiKáikumesh (#4)

Bottom Row: Pakái hiZhnáyu (#1) and Chélesh hiZa'éra (#2), Arukén hiGurúma (#5) and Kotáru hiKúrodu (#6).

Page 2: Top row: Chénesh hiMraktiné (#12), Okán hiNashomái (#14) and Mritá hiVraisúna (#15), Tsolisha hiChánkolu (#17), and Tarkúmu hiQolyélmu (#18).

Bottom Row: Chukún hiMrékka (#7) and Omél hiKhanúma (#8), Rayána hiSsáivra (#9) and Shekkára hiSsáivra (#10), Gárjak (#11), and Migór hiTlakán (#10a)

Key continues on page 3...

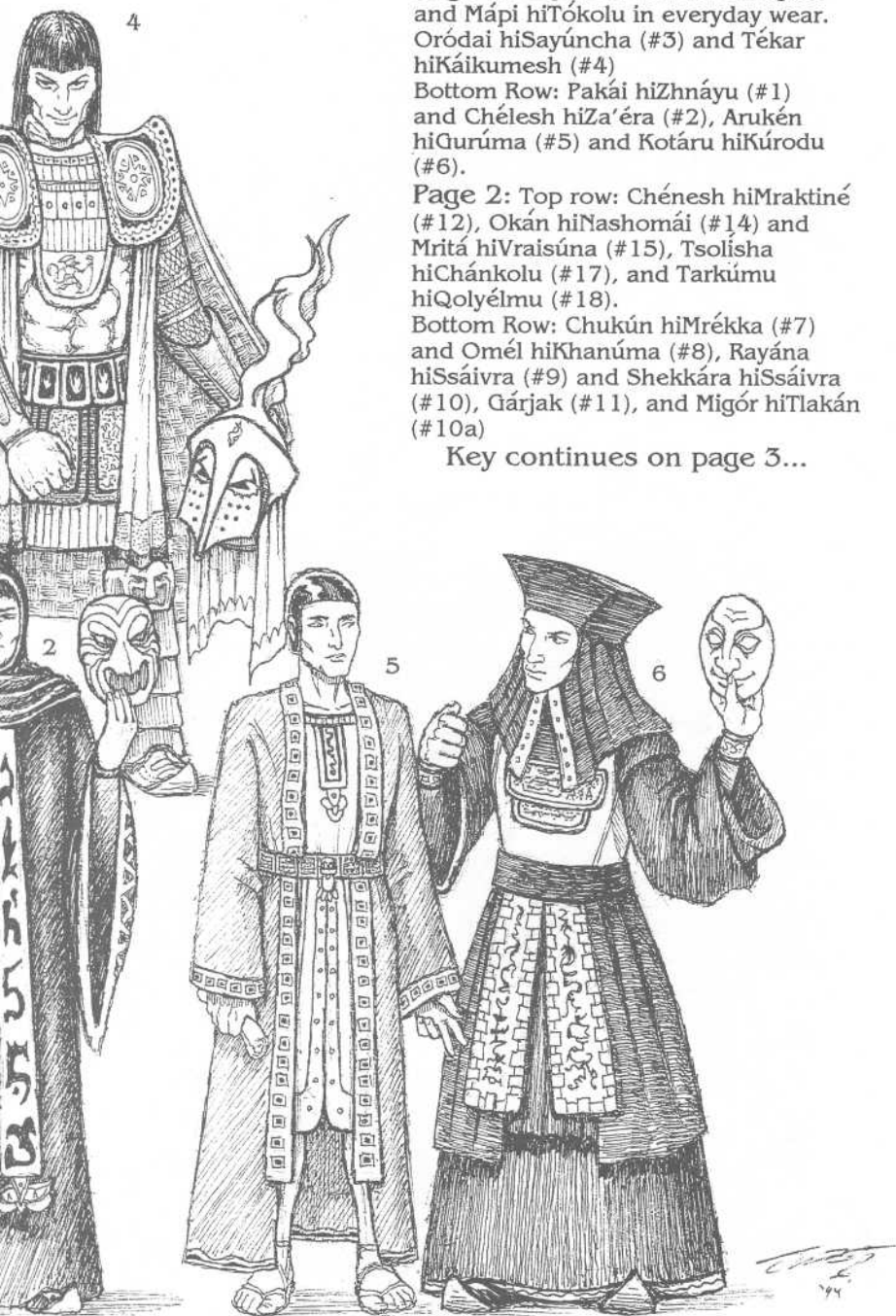


Plate Two



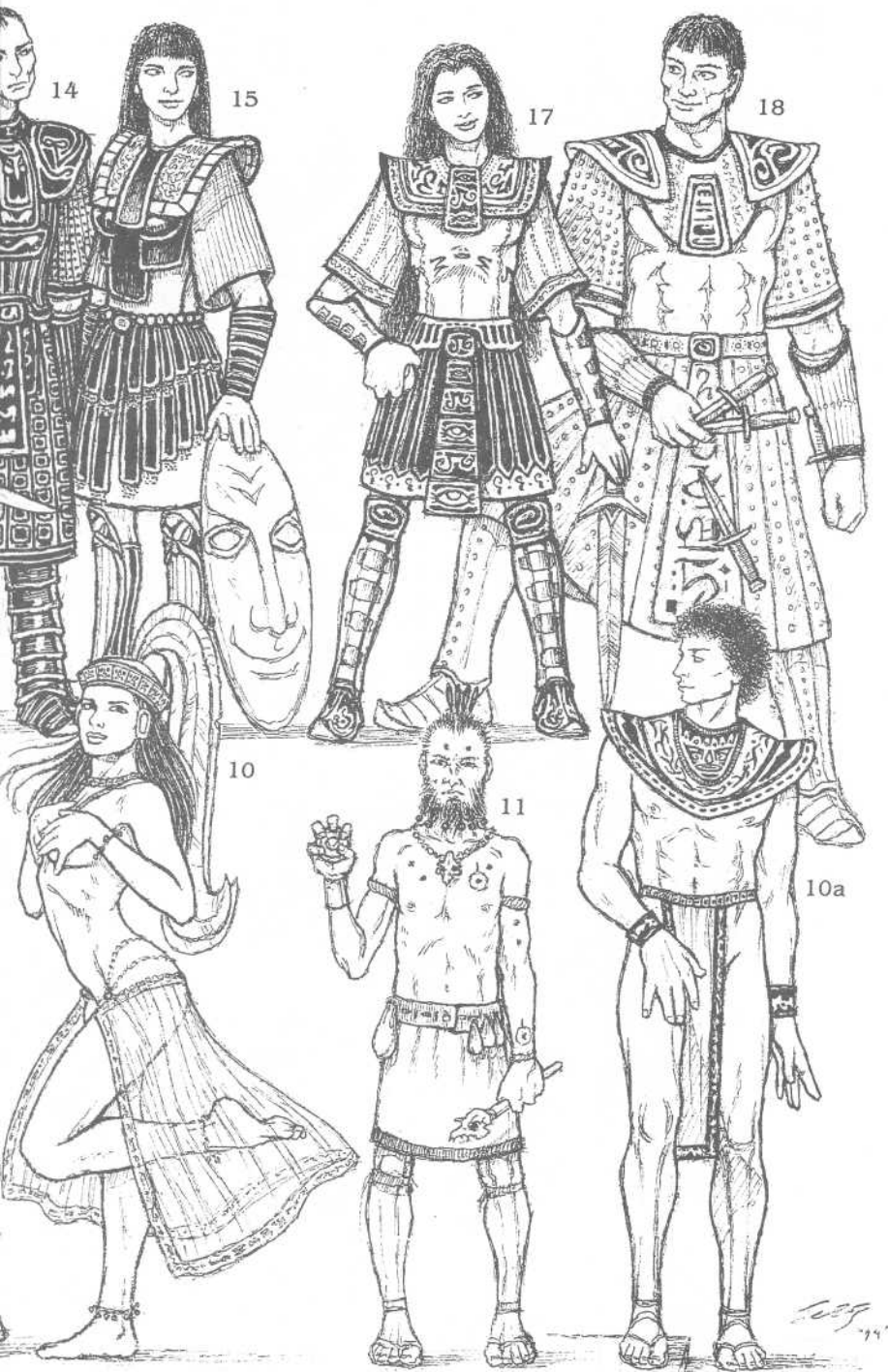


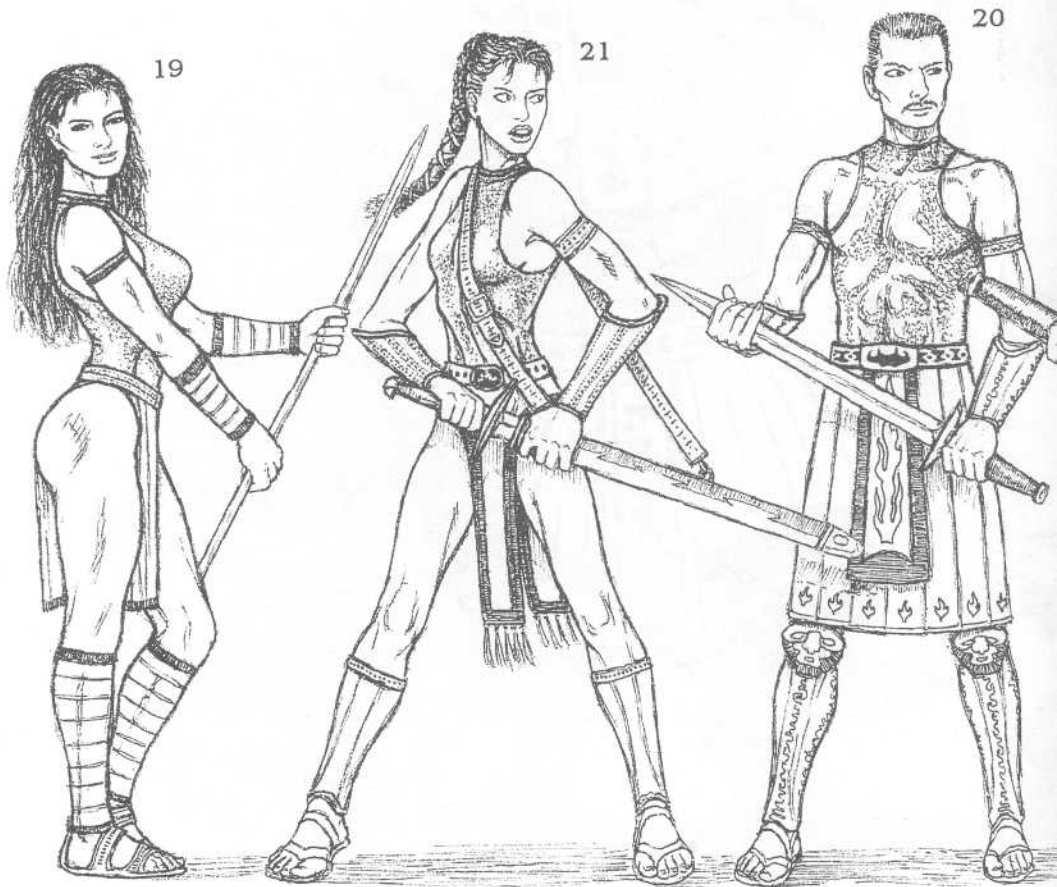
Plate Three

Archetype Key (Continued)

Page 3: Umá hiPagárta (#19), Ta'ána hiTuplángte (#21) and Kágesh hiTánkolu (#20), Chtégh (#22a) and K'lél (#22)

Page 4: Top Row: A'ú'unchkt (#23), A'íya (#24 on Shen's arm), Hsgá G'mír (#25) Bottom Row: Nkék P'tk Kk (#26), Marég (#27), Grg-Sr-Gá (#28), Méthqa (#29), and òm-Tná (#30 standing under Swamp Folk)

Note that the order of of these people in no v their importance to the Glorious Emperor of T Throne and the ever-liv this being a RARE exce usual Tsolyáni custom by status. We allow thi the benefit of you, the Noble Foreignness.



of appearance
no way signifies
to the Great-and-
of The Petal
er-living gods,
exception to the
oms of display
y this only for
the One of

22a

22

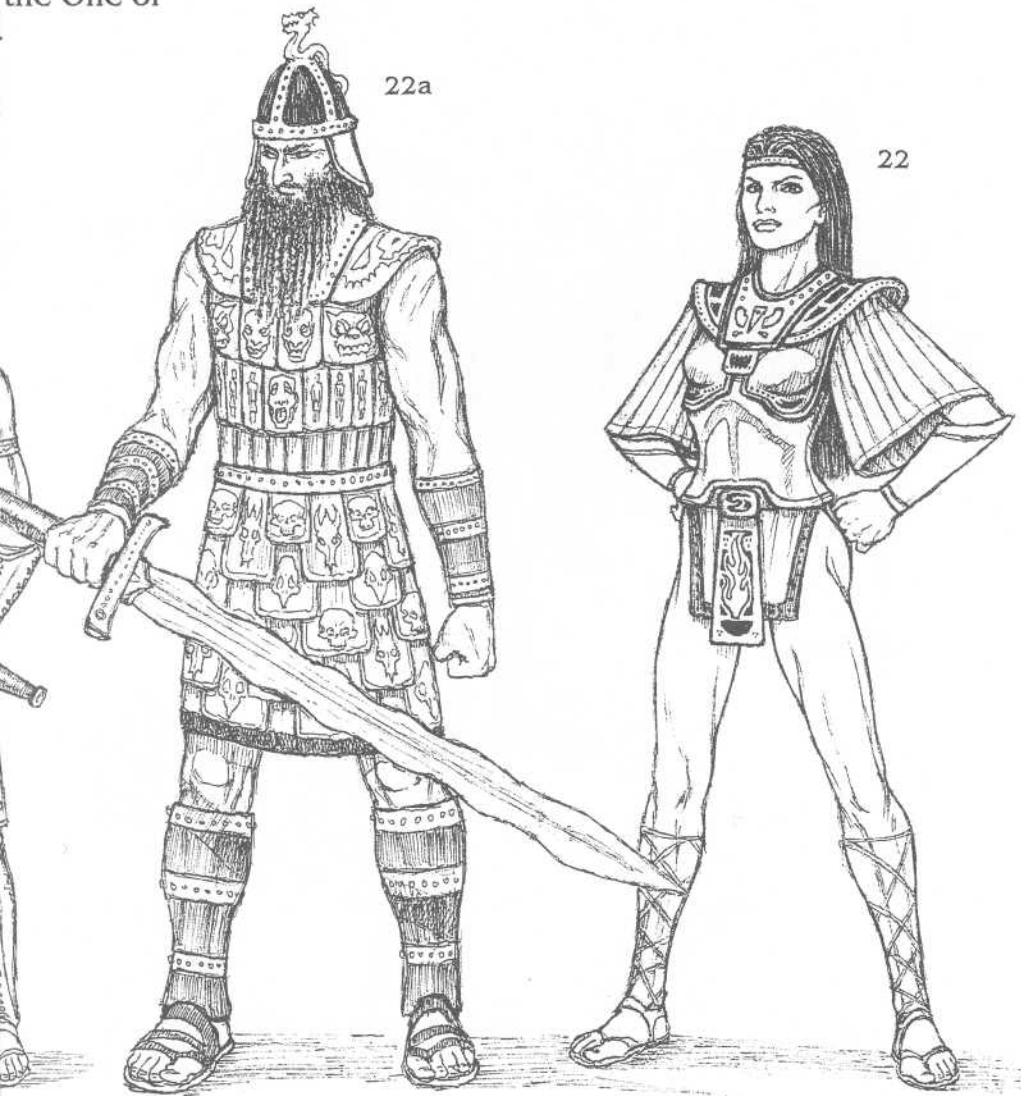


Plate Four



