

Tékumel writing systems

Tékumel: Empire of the Petal Throne is a fantasy world created by Professor Muhammad Abd-el-Rahman Barker. It features a number of constructed languages and writing systems

Tsolyáni

Tsolyáni is one of the languages spoken on the world of Tékumel, and was the first conlang published as part of a role-playing game. It is inspired by Urdu, Pushtu and Mayan. It is the most developed of the languages of Tékumel and has a grammar book, dictionary, pronunciation CDs and a primer.

Notable features

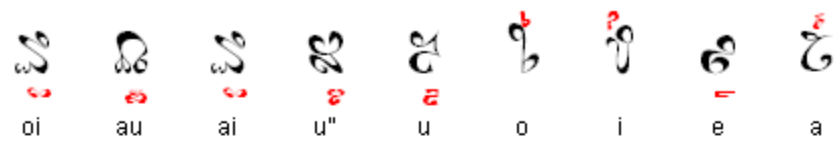
- Type of writing system: vocalised abjad
- Direction of writing: from right to left in horizontal lines.
- Most letters have four different shapes - initial, used at the beginning of words; medial, used in the middle of words; final, used at the ends of words, and separate, used when they appear on their own.
- When vowels come at the beginning of a word, they are written with separate letters, otherwise they are written with diacritics (shown in red below) that appear above the consonants that precede them.

Tsolyáni script

Consonants

											Initial
											Medial
											Final
											Separate
k	j	hl	h	gh	g	f	dh	d	ch	b	
											Initial
											Medial
											Final
											Separate
sh	s	r	q	p	ng	n	m	ll	l	kh	
											Initial
											Medial
											Final
											Separate
glottal stop	zh	z	y	w	v	ts	tl	th	t	ss	

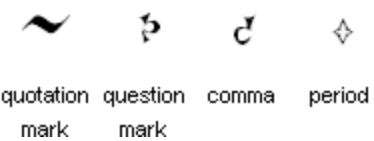
Vowels



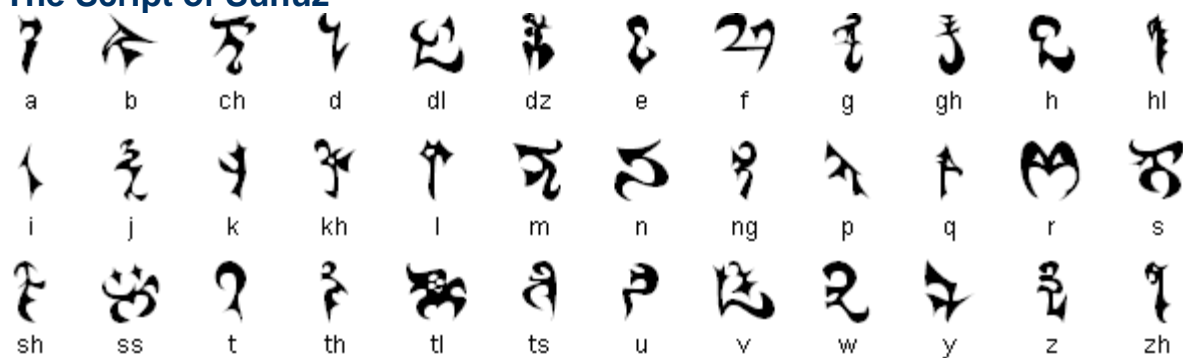
Numerals



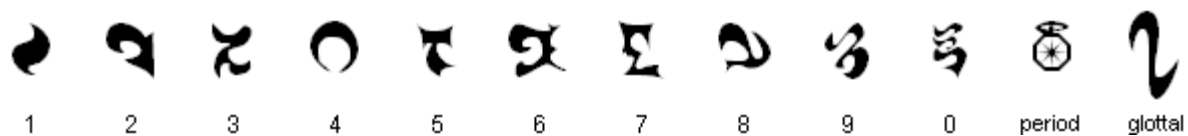
Punctuation



The Script of Sunúz



Numerals



Yán Koryáni script Consonants



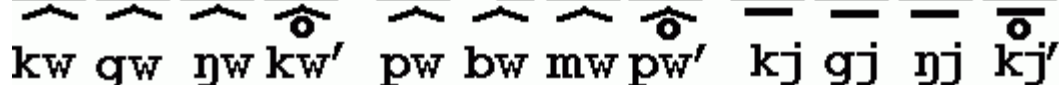
š ž š x y q h m n p ŋ w



p' t' k' q' c' ts' tʃ' pj bj mj p̃j'

- can be used with p, t, k, q, c, ts and tl

$\overline{\circ}$ and $\hat{\circ}$ can be used with p, t, k, q and c.



— ▲ I — — ● ● ♀ ◆ — ■

a e i o u y ə ø æ ɔ



