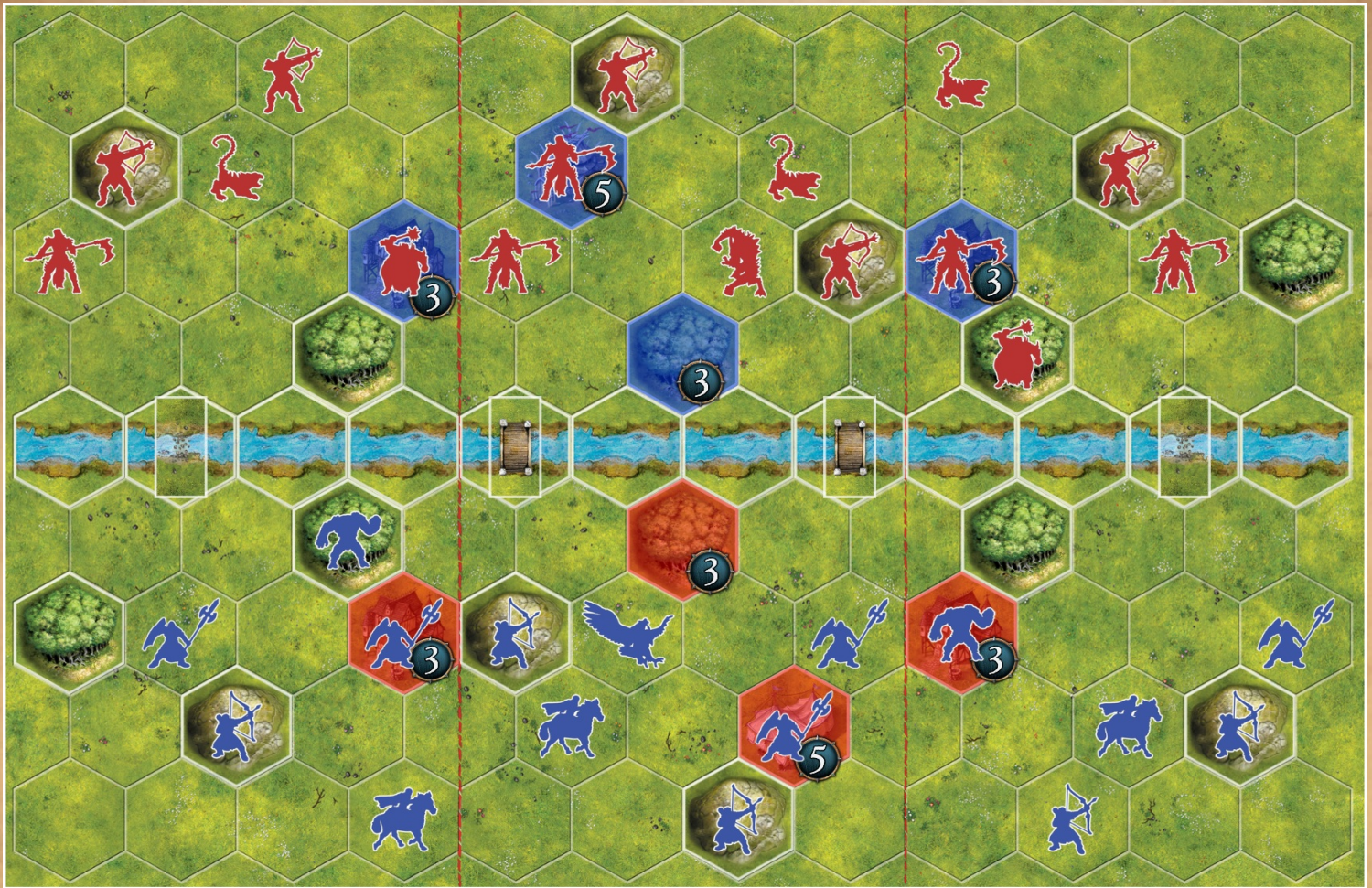


# SHOWDOWN AT THE RIVER



The epic conclusion of a brutal campaign. The terrifying Uthuk facing the brave men. Who will cross the river first and claim the magic lore of the enemy? No one will ever surrender!

-13 points is the goal, the amount of turns must be the same.

## SETUP

Each player starts the game with 3 randomly drawn lorecards.

Optional: each player starts with: Patrol right, patrol center, patrol left and line advance

## SPECIAL RULES

-The limit of Lorecards is up to 6

-If a player's army occupies the colored terrain tiles on the opponent's half of the game board the first time; He/she receives the stated value of lore.

## OBJECTIVE

-Players receive victory points for eliminating enemy units;