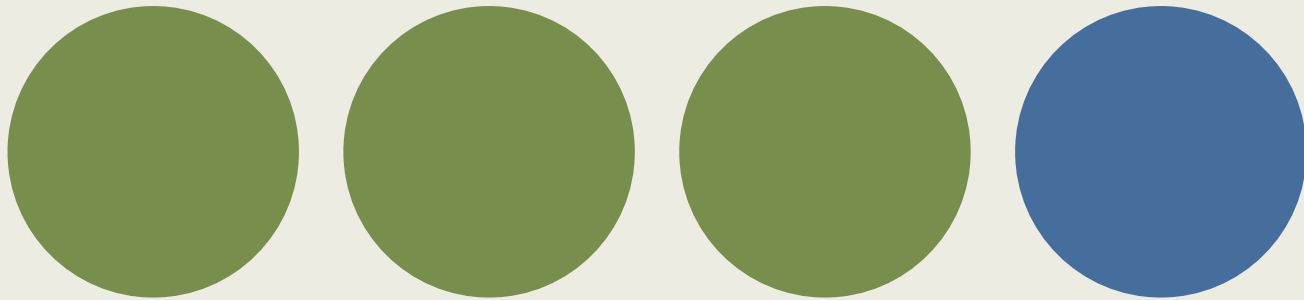


THE BAD

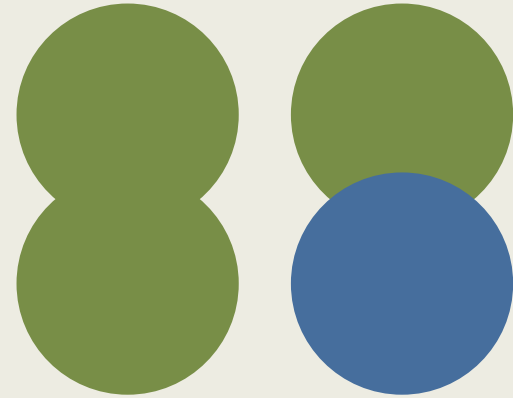


PLUS

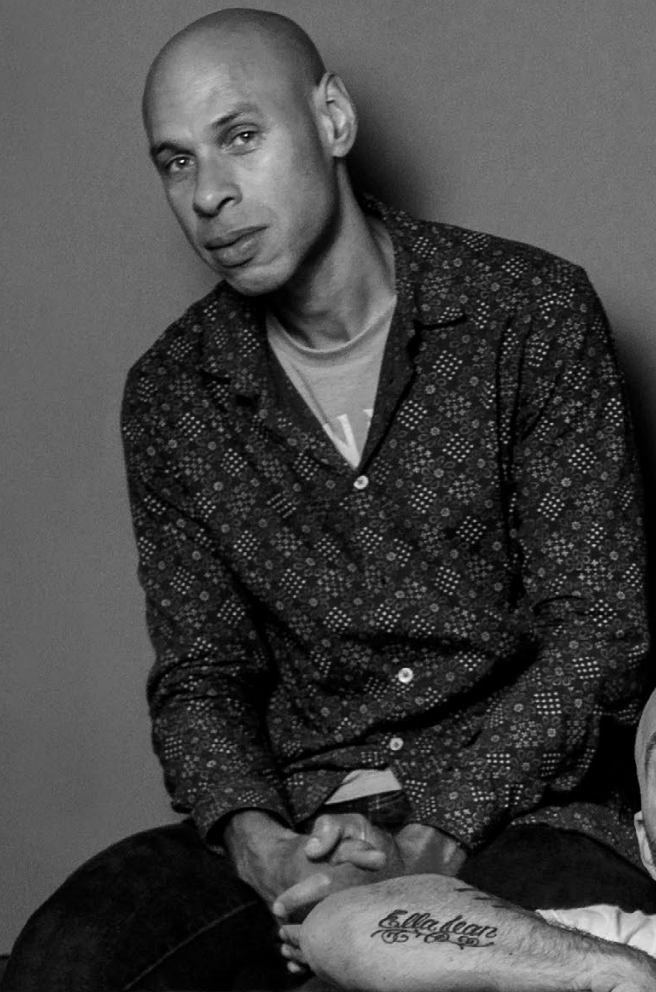
JOSHUA REDMAN

THE BAD PLUS JOSHUA REDMAN

1. As This Moment Slips Away
Reid Anderson / © Dirty Showtunes Music (BMI)
2. Beauty Has It Hard
David King / © Franz Kline in the Dunk Tank (BMI)
3. County Seat
Ethan Iverson / © Iverson Music (BMI)
4. The Mending
Joshua Redman / © Shedroff Music (BMI)
5. Dirty Blonde
Reid Anderson / © Dirty Showtunes Music (BMI)
6. Faith Through Error
Ethan Iverson / © Iverson Music (BMI)
7. Lack The Faith But Not The Wine
Reid Anderson / © Dirty Showtunes Music (BMI)
8. Friend Or Foe
Joshua Redman / © Shedroff Music (BMI)
9. Silence Is The Question
Reid Anderson / © Dirty Showtunes Music (BMI)



REID ANDERSON - bass
ETHAN IVERSON - piano
DAVID KING - drums
JOSHUA REDMAN - tenor
saxophone



Produced by The Bad Plus Joshua Redman
Recorded and Mixed by Pete Rende at Brooklyn Recording
Mastered by Huntley Miller at HM Mastering
Production Coordination by Courtney Hawkes & Chris Hinderaker
David King plays Rat Rod drums, Zildjian cymbals and Vic Firth sticks
Photographs by David Jacobs
Artwork and Design by Greg Meyers and David King

The Bad Plus

• Depth of Field Management • hello@dof3.com

Joshua Redman

• Wilkins Management • info@wilkinsmanagement.com

Booking (U.S. and ROW excluding EU)

• International Music Network • jeanna@imnworld.com

European Booking

• Music Works International • info@musicworksinternational.com

The Bad Plus appear courtesy of Sony Masterworks

Special thanks to Robert Hurwitz & Chuck Mitchell and their
Nonesuch & Sony Masterworks colleagues

Thank you Paul Boothe and Jonin Fehlmann for tour coordination

As always, thank you to our families, friends and listeners

www.thebadplus.com www.joshuaredman.com



Nonesuch Records Inc., a Warner Music Group Company, 1633 Broadway, New York, NY 10019. © & © 2015 Nonesuch Records Inc. for the United States and WEA International Inc. for the world outside of the United States. Warning: Unauthorized reproduction of this recording is prohibited by Federal law and subject to criminal prosecution.

